



Wenzhou Safewire Electric Co.,Ltd.  
2<sup>nd</sup> floor, Wealth Garden, Liushi Town, Yueqing city,Wenzhou,Zhejiang,China  
Tel:0086-577-61725369; Email:info@safewirele.com;  
[www.safewirele.com](http://www.safewirele.com)

Wenzhou Safewire Electric CO.,Ltd.

# SPECIFICATION SHEET

**PRODUCT NAME: RJ45 Jack**

**PRODUCT No. : R-US-08S**



ADD: 152 xinguang industrial zone, yueqing city, zhejiang province  
(TEL) :0086-577-62799688  
(E-mail) : info@safewirele.com  
(WEB): <http://www.safewirele.com>



**SAFEWIRE**

Wenzhou Safewire Electric Co.,Ltd.

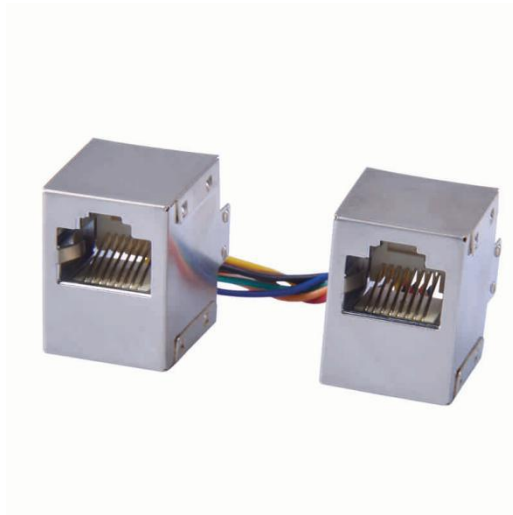
2<sup>nd</sup> floor, Wealth Garden, Liushi Town, Yueqing city,Wenzhou,Zhejiang,China  
Tel:0086-577-61725369; Email:info@safewirele.com;

[www.safewirele.com](http://www.safewirele.com)

### Product Description

<b>Item No.</b>	R-US-08S
<b>Category</b>	8P8C
<b>TIA/EIA</b>	568A/B coded
<b>Wiring</b>	Toolless
<b>Type</b>	shielded
<b>Angle</b>	180°
<b>Wire Gauge Supported</b>	22-26AWG Cable
<b>Brand</b>	Safewire
<b>Material</b>	ABS
<b>Color</b>	Silver
<b>Mechanical Life</b>	50,000 Times

### Product Show:



### Product description



## Wenzhou Safewire Electric Co.,Ltd.

2<sup>nd</sup> floor, Wealth Garden, Liushi Town, Yueqing city, Wenzhou, Zhejiang, China  
Tel:0086-577-61725369; Email:info@safewirele.com;  
[www.safewirele.com](http://www.safewirele.com)

Safewire RJ45 jack is including 8P8C and designed for computer networking.

- \* Shielded STP Cover: Designed for protection from external radiated noise
- \* 50 μinch Gold Plating: On the jack contacts for durability and a long lifespan
- \* T568A/B Wiring Scheme: Color-wiring diagram for ease of installation
- \* PCB technology provides maximum performance and superior signal quality.
- \* CAT6 rated connector provide excellent performance for data networks 100MHZ/120Mbps speed and bandwidth.
- \* Gold plated contacts and easy snap-in retaining clip ensure a secure and corrosion free connection.
  - \* Using high quality poly-carbonate flame retardant materials as UL94V-0.
- \* Backwards compatible to all lower rated category components..
- \* Rear IDC (Insulation Displacement Connector) type contacts offer effortless of termination and improved wire retention.

### Feature:

Suitable for mounting in a range of housings from patch panels, faceplates and shutters, wall plates.

### Technical Spec.:

#### 1. Electrical:

- 1.1. Insulation Resistance: Min 500 MOhm @100 Vdc.
- 1.2. Dielectric Withstanding voltage/Compressive strength: 1,000 Vdc/ac peak contact-to-contact @ 60 Hz for 1 min.
- 1.3. Spring Wire Contact Resistance: Max. 20 mOhm.
- 1.4. IDC Contact Resistance: Max. 2.5 mOhm.

#### 2. Mechanical:

- 2.1. Dimensions: D: 34.42mm/1.35"; W: 23.03mm/0.91"; H: 45mm/1.77";
- 2.2. Wiring diagram: TIA/EIA568 OR ISO/IEC11801 standard; IDC wiring: 180 degree IDC twisted Pairs;
- 2.3. Total Contact Force: Min 800 g for 8 wire leads.
- 2.4. Retention: 50 N(11 lbf) for 60+\_5 S;
- 2.5. Mating Cycle Life: Min 750 cycles;

#### 3. Construction:

- 3.1. Housing: Metal housing, Nickel plating;
- 3.2. Jack Spring Wire: Phosphor Bronze alloy plated with 50 Uin of gold over 70 to 100 Uin of nickel;



Wenzhou Safewire Electric Co.,Ltd.

2<sup>nd</sup> floor, Wealth Garden, Liushi Town, Yueqing city,Wenzhou,Zhejiang,China  
Tel:0086-577-61725369; Email:info@safewirele.com;

[www.safewirele.com](http://www.safewirele.com)

**Safewire Network modules production facilities & testing equipment:**



**RoHS Certificate of Compliance:** Conforms with the Directive 2002/95/EC (ROHS)