



Wenzhou Safewire Electric Co.,Ltd.
2nd floor, Wealth Garden, Liushi Town, Yueqing city,Wenzhou,Zhejiang,China
Tel:0086-577-61725369; Email:info@safewirele.com;

Wenzhou Safewire Electric CO.,Ltd.

SPECIFICATION SHEET

PRODUCT NAME: **Pull Outlet Box**

PRODUCT No. : **HTD-11/K**



ADD: 2nd floor, Wealth Garden, Liushi Town, Yueqing city,Wenzhou,Zhejiang,China
(TEL) :0086-577-62799688
(E-mail) : info@safewirele.com
(WEB): <http://www.safewirele.com>



Wenzhou Safewire Electric Co.,Ltd.

2nd floor, Wealth Garden, Liushi Town, Yueqing city,Wenzhou,Zhejiang,China
Tel:0086-577-61725369; Email:info@safewirele.com;

Technical parameters & characteristic :

1) Working environment:

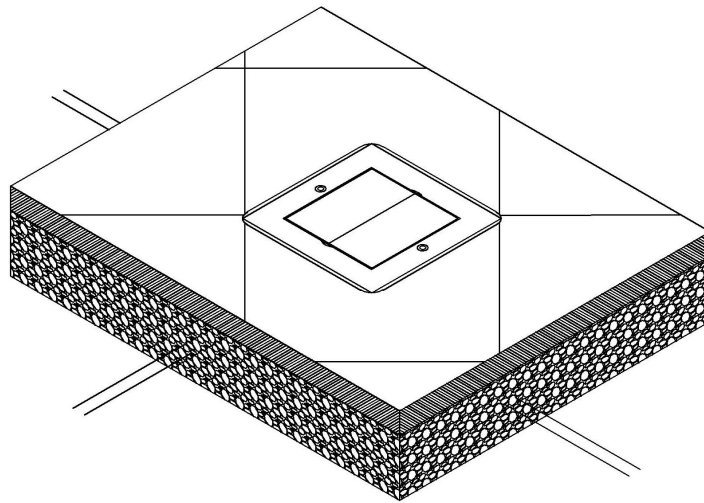
1. The environment temperature:-5°C~/40°C
2. The rated voltage : 100V~~250V
3. Rated current : 10A、 13A、 16A、 20A

2) Technical parameters :

| Serial No. | Parameter | Description |
|------------|------------------------|---------------------------------------|
| 1 | Panel Material | Brass alloy/Stainless steel |
| 2 | Surface finish | Wire drawing/Polishing/Spray painting |
| 3 | Panel Dimension(mm) | 120*120 |
| 4 | Cutout(mm) | 105x105 |
| 5 | Static pressure | 1000N |
| 6 | Horizontal mounting | Horizontal installation |
| 7 | Sink box Material | Steel+Zinc plated |
| 8 | Hinged lid thickness | 4MM |
| 9 | Base box dimension(mm) | 105*105*48 |
| 10 | Available modules | 45*45/45*22.5(mm) modules |

Application:

- 1) Raised floor



Concrete floor requirements for floor socket:

- 1、 No pollution to the environment, no harm to the human body, no toxicity.
- 2、 Easy to install and easy to use, not easy to damage

Product Show:



Features:



1. Two lid be hidden while opened.
2. 2 optional choice of lid as round or square shape.
3. Lid thickness over 4mm and more strong stastic pressure over 1000N.
4. Applicable for Legrand's 45*45mm Mosaic series modules.
5. With 48mm height bottom box.

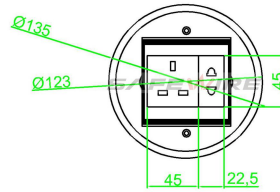
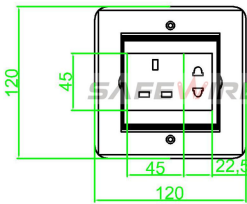
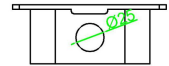
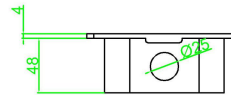
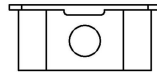
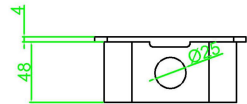
HTD-11K Outline drawing:

HTD-11 outline

Units:mm

HTD-11 outline

Units:mm



Package:12 Pcs inner box into a master carton.Poly bag with box packing.

SafeWire

HTD-11 Package solution



HTD-11 socket



The product is wrapped in foam



Socket with Kraft paper carton



kraft paper



outer box



packing tape



Put to pallet



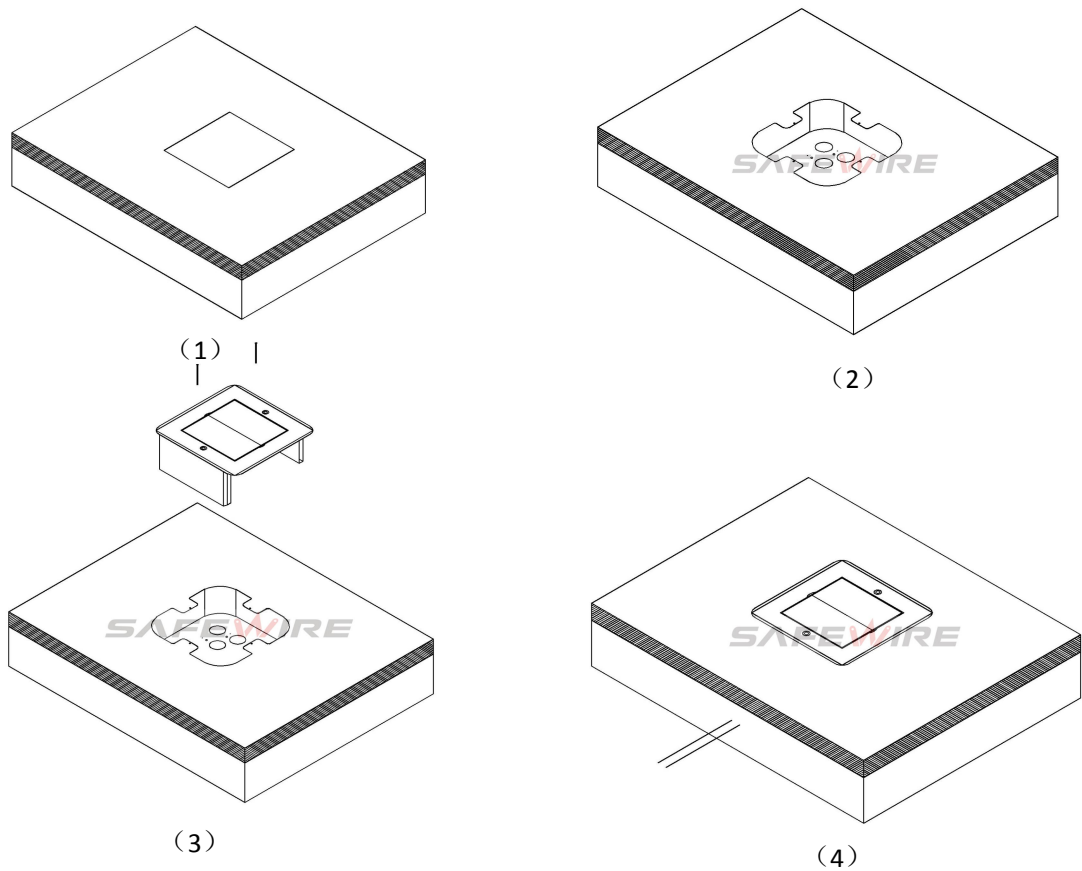
Master carton with shrink film with pallet



container

Installation instructions:

1. Cut out 105*105(mm), Powering the slurry.
2. Remove the pre-installed temporary lid,wiring and installing modules,Per-installthe cable pipe as per your request .
3. Install cover lid and tighten with screws.
4. Conceal the cut edge of carpet of flooring



Attentions:

- 1.When installing and wiring,Product should avoid direct contact with corrosive liquid, gas (strong acid, strong alkali, paint).
- 2.This product is suitable for dry surface treatment, avoid water flush and immersion, and ensure its insulation.This product is not suitable for use in wet areas.
- 3.All dimensions quotes are nominal only.Drawing images and specification are only for illustrative purposes and dimensions are subject to final confirmation by us.

Safety Warning:

- 1.This is a class I product and must be earthed
- 2.This product must be installed/wired by a qualified electrician
- 3.For indoor use only.