

WENZHOU SAFEWIRE ELECTRIC CO.,LTD.

Address:Liushi town, Yueqing, Wenzhou , Zhejiang,China,325604

Tel:0086-577-61725370

Mail:info@safewirele.com

Wechat:happyhe7806

Skype:happy.he7806

Whatsapp:008618612380398

QQ:1119145917

Web:WWW.SAFEWIRELE.COM



For more details,
please visit:
www.safewirele.com
or scan this QR code.



ISO 9001
Quality

ISO 14001
Environment

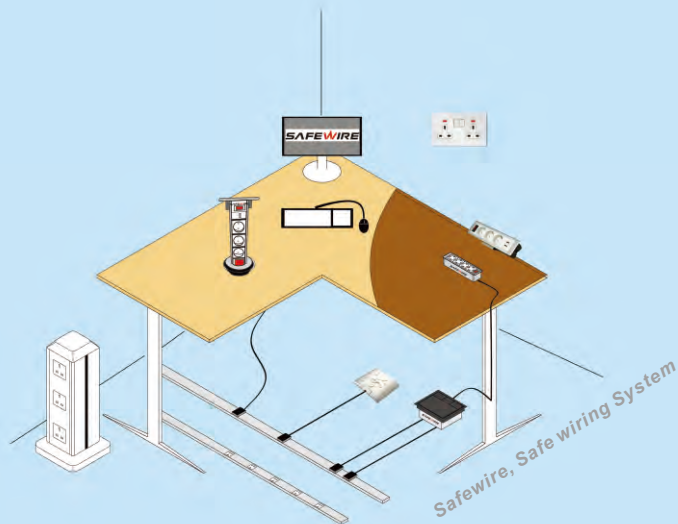
OHSAS 18001



TÜV Rheinland®

20 years OEM factory for almost world-wide brand of floor sockets

 **SAFEWIRE**, Safe Wiring System
Since 1998; 20 years OEM factory for global brand



Floor box / Floor socket / Cable management



Safewire 2023-2024 Season



About Us

WENZHOU SAFEWIRE ELECTRIC CO.,LTD.

We provided OEM and ODM service for most worldwide brands. And exported products & service to over 56 countries in Europe, Australia, Middle East and Southeast etc. When our clients purchase our products, they know they are getting value for their money, with performance, reliability and quality. Every product carries our personal guarantee and service commitment. Our team stands behind every product we sell-even years after it is installed. We now offer reliable years warranty on all Safewire products, covering parts and labor. We have built our reputation on this.

Of course we also have a huge range of shapes, sizes, boxes with IP Ratings and your choice of a metal finish or inlay, all readily available from your local electrical wholesaler. If none of our options are suitable for your application, please contact us about customization solution for you.

The world will keep changing. This is what keeps Safewire ahead. Listening to, and acting on, customer feedback sets our products apart from others. Safewire, On the way!

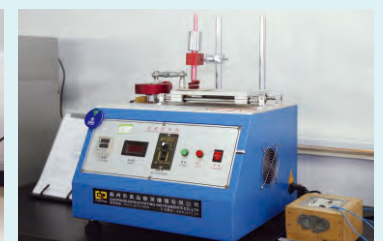


Our Lab

Our object is to deliver professional connected wiring solutions that are based on new business models and offer new services for all kind of applications.

Today, Safewire is an active member of important associations and consortiums in electric industry-both worldwide and on a regional level.

- A) Associations/ Alliances IEC; CQC;
- B) Certification bodies ISO, CE, RoHS, EN/EC,



Equipment

We produce high quality electric products and export all over the world.

Safewire Cable Management , Power Distribution Electric & Electrician products etc.



Our production facilities include:

- Factory: 30,000 square meters building areas;
- R&D department: 3D design and engineers with vast experience and knowledge.
- Tools department: We have brand new CNC center with erosion machines, trilling machines and saw machines.
- Press department: Equipped with several new press machines for up to 100 t and 10 lathe machines metal cutting and bending machines. etc.
- Galvanization department: Newly refurbished automatic galvanizing line. We can make Ag, Zn, Ni and Tn plating on our metal and copper parts.
- Own independent electrical laboratory--Full routine testing for our own products, 300 sqm of advanced technology lab.







BS 1363 EC-RED CB FC

CE certificate, report and ROHS certificate

3rd

Party Test Certificate

Although not a mandatory requirement the company supports as a policy that all functional products should undergo a third party test certification process. Please note that our products fulfill type testing to the National Standards GB/T23307 and International standards IEC60884 can demonstrate compliance and product reliability.



IP55 test certificate and report



FCC,RED Certification



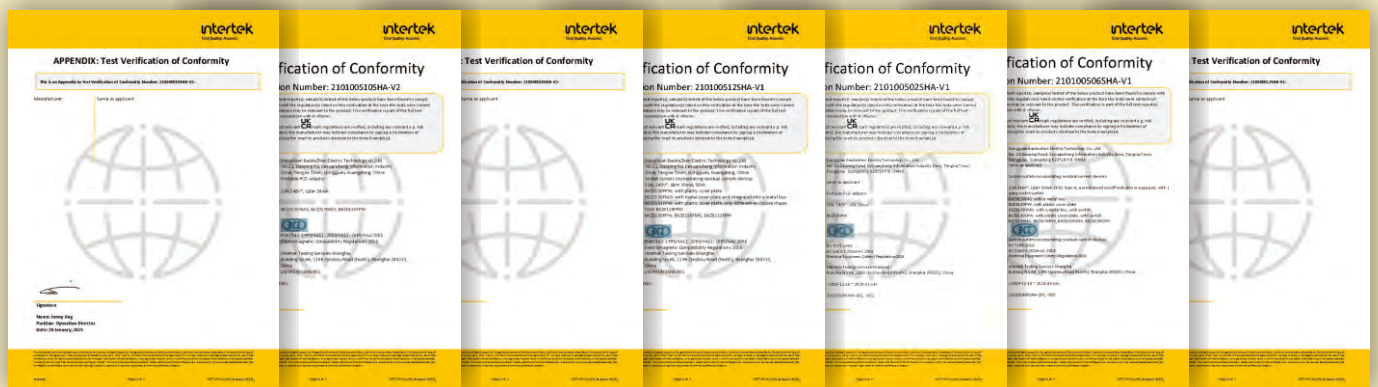
SAA Certification



Tuv and CE Certification



BS1363 UKCA Certification



Delivery to global market

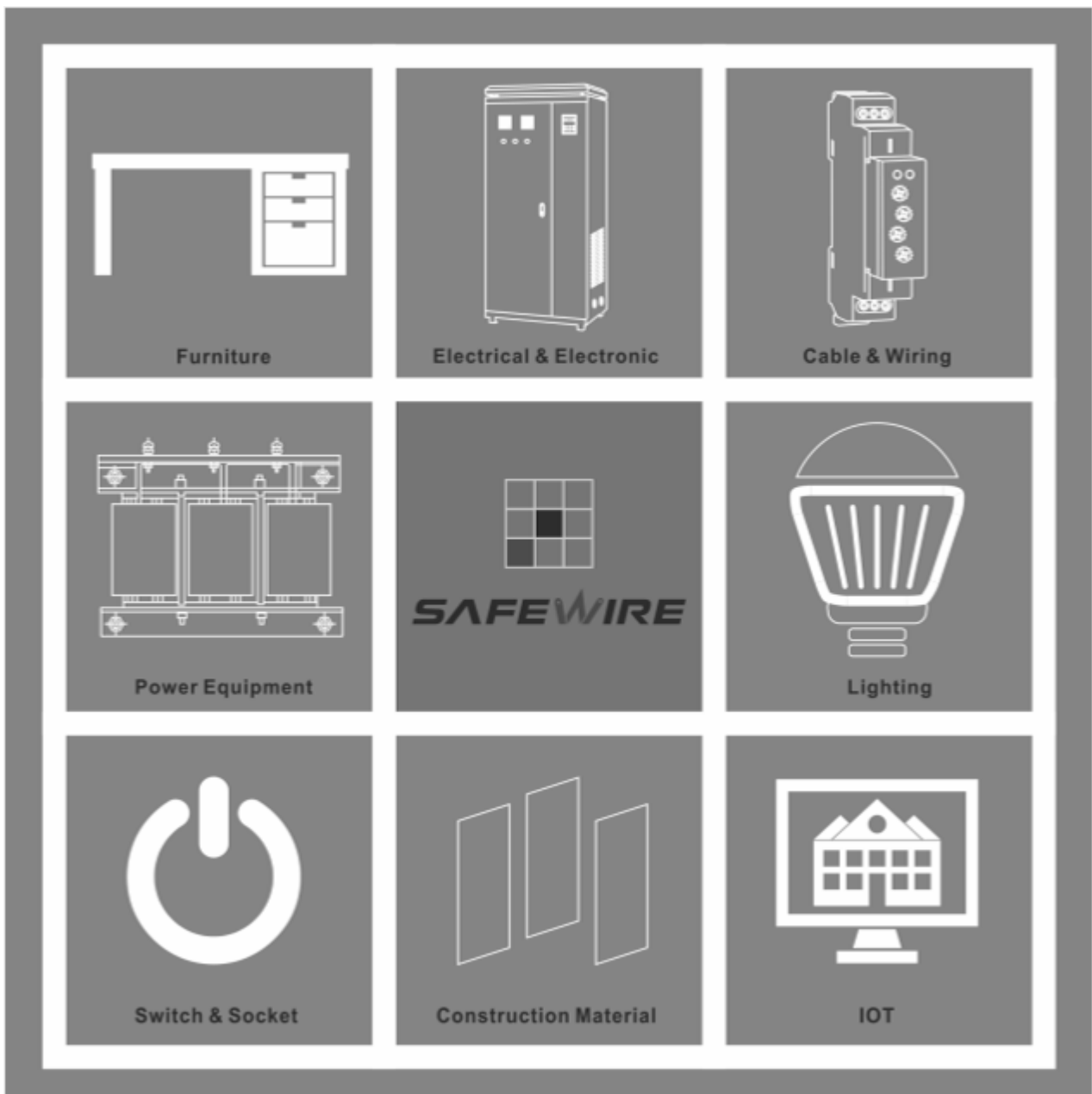
1	法国 France		14	印度 India		27	新加坡 Singapore	
2	德国 Germany		15	斯里兰卡 Sri Lanka		28	印度尼西亚 Indonesia	
3	西班牙 Spain		16	巴基斯坦 Pakistan		29	越南 Vietnam	
4	波兰 Poland		17	阿联酋 United Arab Emirates		30	南非 South Africa	
5	俄罗斯 Russia		18	卡塔尔 Qatar		31	尼日利亚 Nigeria	
6	澳大利亚 Australian		19	伊拉克 Iraq		32	摩洛哥 Morocco	
7	韩国 Korea		20	伊朗 Iran		33	莫桑比克 Mozambique	
8	加拿大 Canada		21	以色列 Israel		34	喀麦隆 Cameroon	
9	巴拉圭 Paraguay		22	哈萨克斯坦 Kazakhstan		35	柬埔寨 Cambodia	
10	阿根廷 Argentina		23	乌兹别克斯坦 Uzbekistan		36	约旦 Jordan	
11	厄瓜多尔 Ecuador		24	香港 Hong Kong		37	塞浦路斯 Cyprus	
12	秘鲁 Peru		25	马来西亚 Malaysia		38	沙特 Saudi Arabia	
13	智利 Chile		26	泰国 Thailand			...	

Safewire products cover IEC standard, BS standard and others etc.

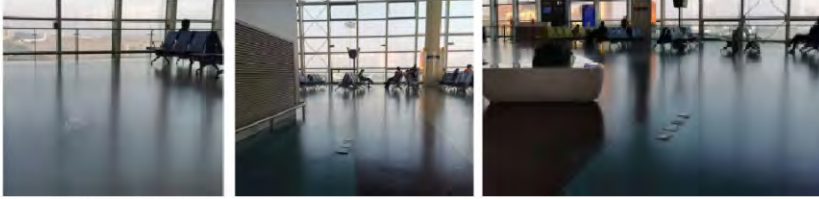
————— Your are the next

Application Area

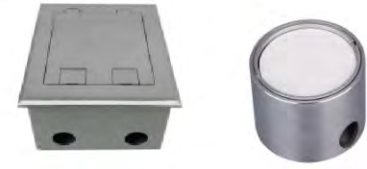
1. Switch & socket Electric
2. Lighting
3. Building Material & Steel tray
4. Optic cable and Telecom accessories
5. Low voltage equipment
6. Video, Audio and Electronic accessories
7. PVC and trunking system
8. Office Furniture
9. Security and Automation
10. Power distribution equipment



1. Dubai Airport



Product picture



2. Paraguay Flooring in bank



3. National University of Singapore



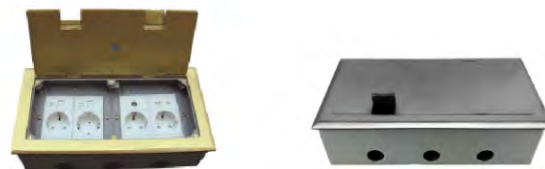
4. Bank in Africa office furniture



5. Malaysia Kuala Lumpur TRX Shopping Plaza & Roof Garden



6. Kazakhstan factory flooring



This is not including Non-Disclose Agreement Project

GUARANTEE OF AFTER-SALE SERVICE

Safewire Electric Co.,Ltd assure that our products are strictly in accordance with the ISO management system ,now we guarantee our products after-sale service as this following :

- 1 Our company guarantees that the products will be strictly inspected before shipped from factory and the QA rate of products will 100%.
- 2 Our company guarantees that within 1 year from date of receipt and finish installation if some problems occure, our company is responsible for replace free of charge. If beyond warranty period, we will provide you with corresponding paid services within a reasonable range.
- 3 Our electrical accessories is guaranteed to give satisfactory performance for life provided the following conditions exist.
 - a. The accessory has been properly installed by a competent person.
 - b. The accessory has been installed in accordance with the wiring regulations and amendments in force at the time of installation, and that it has not been tampered with or subjected to improper or abnormal use.
4. This following statitution will be paid service:.
 - * exceeding the warranty period;
 - * failure to provide purchase evidence/documents;
 - * damage caused by failure to use or repair the product as required in the product manual (pay special attention to water inspur into, damage by drop or other not right way by people);
 - * if the customer repairs or disassembles by himself or by other person who not authorized by our company;
 - * damage caused by wiring with bad quality level communication cables;
 - * failure or damage of products caused by major force such as flood, fire, lightning, eather-quake etc.

When problems occur during the use of the product, our technical engineer will actively respond. Any problem of product quality ,our company will guarantee a clear reply or solution within reasonable time.

Remark: Safewire Electric Co.,Ltd reserves the right to modify, at any moment, in the consumer's best interests, the features and components of its products without prior notice.

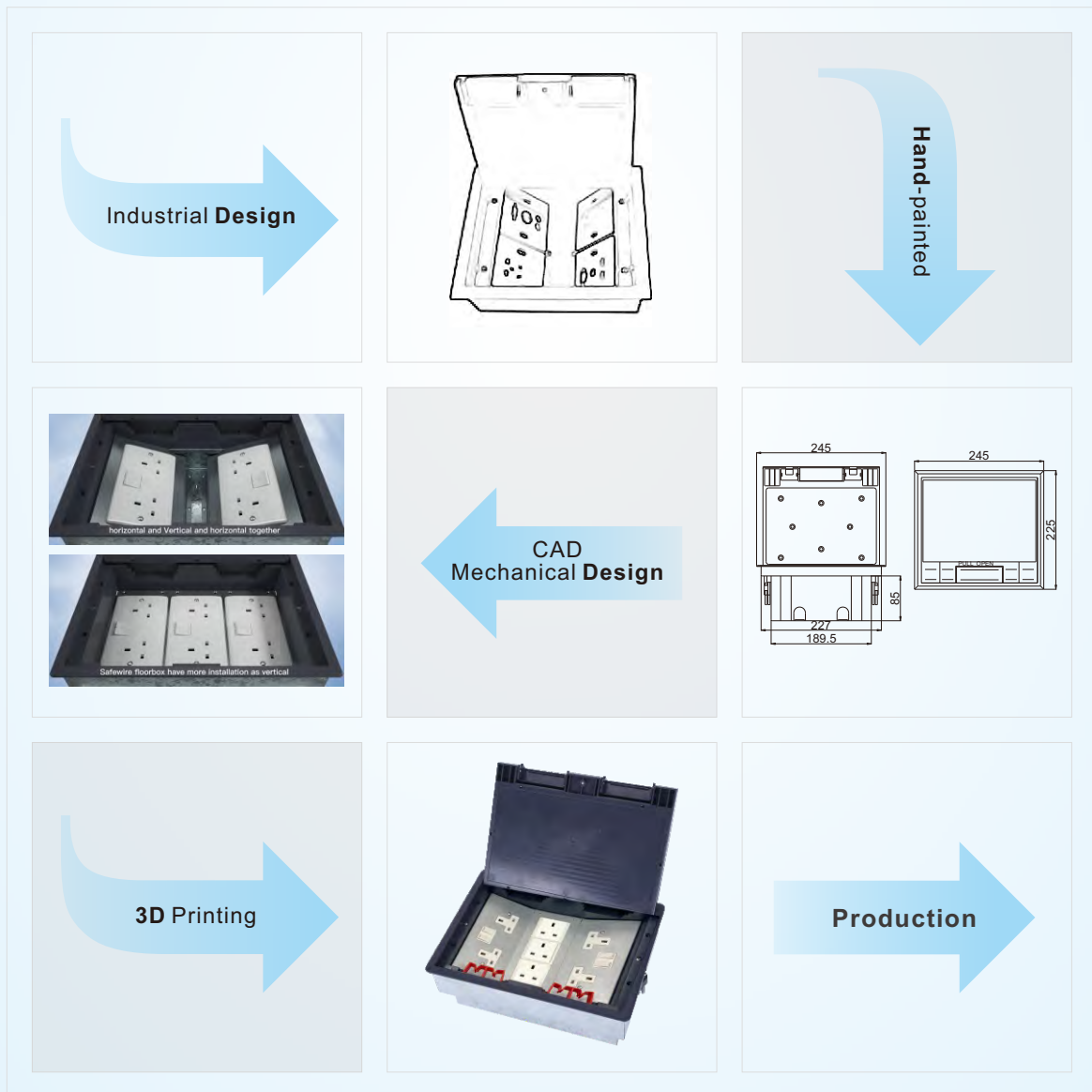
Safewire Electric Co.,Ltd



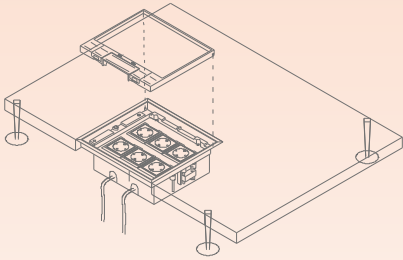
Customized Design & Production

DESIGN SERVICE From "0" to "1"

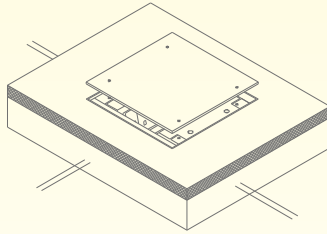
Design service integrating appearance, structure, application and production



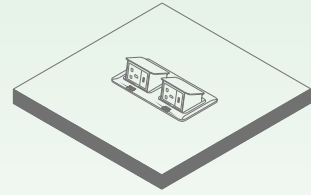
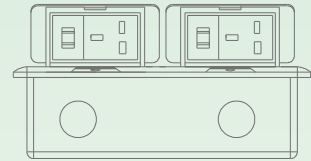
HTD-624AS



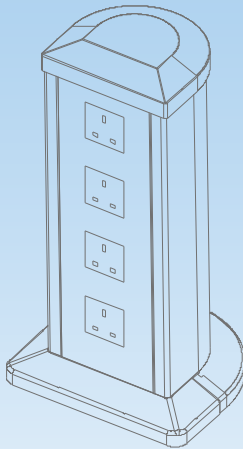
HTD-180



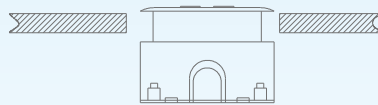
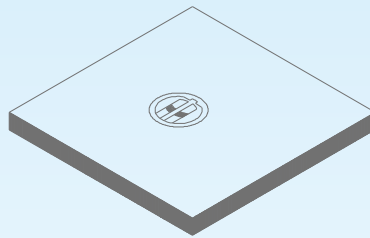
HTD-1602



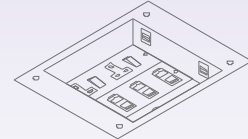
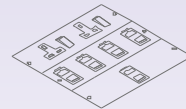
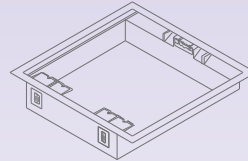
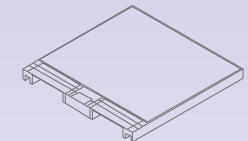
FZ-532



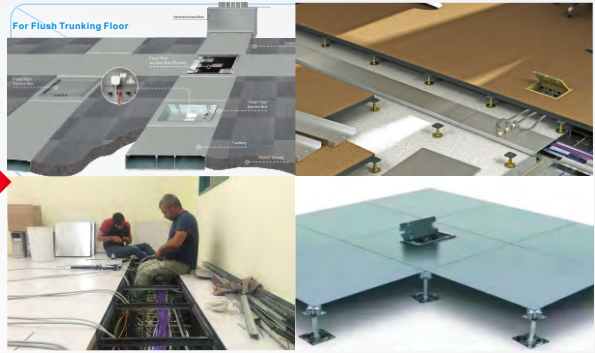
HTD-610S



SCF-A01



SCF: Underfloor/Raised floor box



P03

POB: Heavy Duty Floor box



P13

SOB: Serviced Outlet Box



P24

FUS: Flip Up socket



P29

MCS: Mini-Columns Socket & utility column



P34

SCF Series Features

1. More capacity



8 Way Modules



12 Way Modules

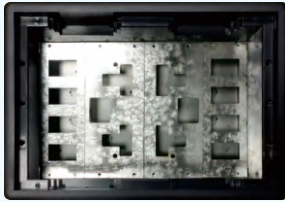


16 Way Modules

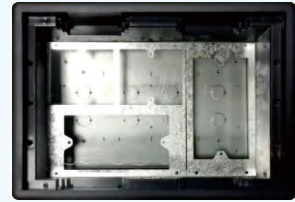
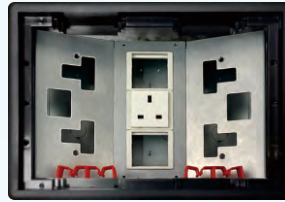


24 Way Modules

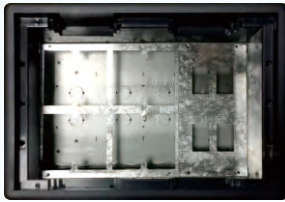
A) 4 compartment 77mm bridges of switch socket:



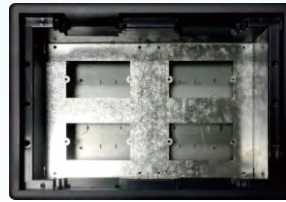
B).3 compartment 146 & 86mm bridges of switch socket:



C).3 compartment 86*77mm bridges of switch socket:



D).1 compartment of 120 bridges of socket and data:



2. More optional box for raised floor or concrete floor:



Galvanized Steel



Plastic Bottom Box



Stainless steel Bottom Box

3. More optional installation:



Vertical Installation



Horizontal Installation



Vertical & horizontal Installation

4. More optional switch & socket



45*45mm Modules



86 Type Compartment



120 Switch Board

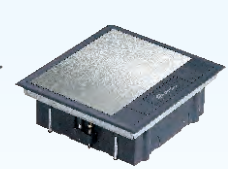
5. More Optional Coverplate:



HTD-XXXAS
Cover middle
can be filled



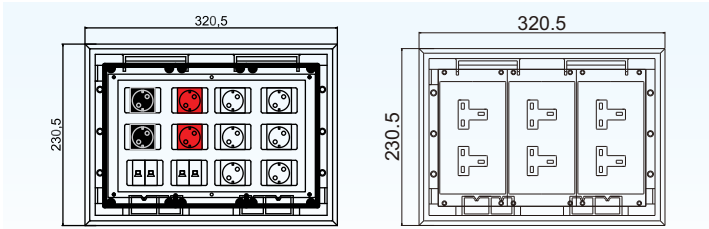
HTD-XXXSS
Filled with
Plastic plate



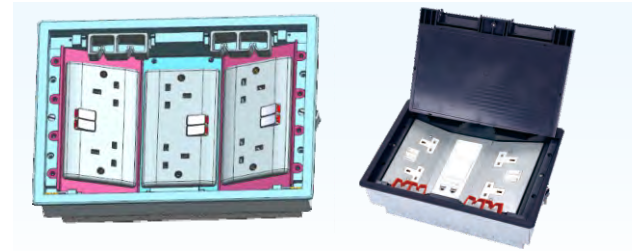
HTD-XXXSP
Filled with
SUS plate

Advantage

1. More capacity

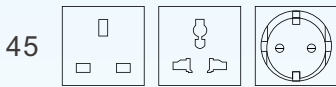


2. More installation:

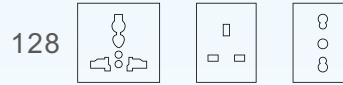


3. More International outlet:

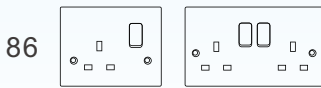
1. 45*45mm Modules



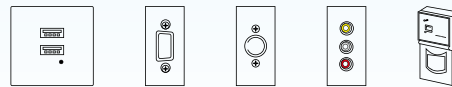
2. 128 Type series



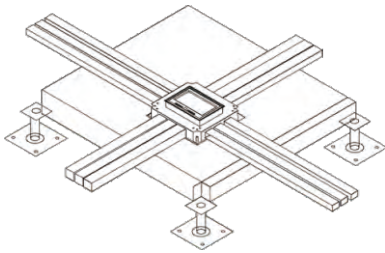
3. 86/146 Type module socket



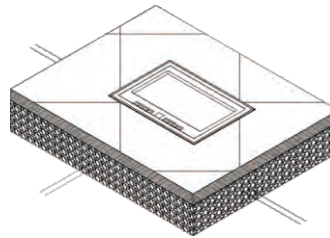
4. 5V 4.2A USB charger, HDMI, Cat6, RCA, and so on



4. Optional Raised/underfloor system:

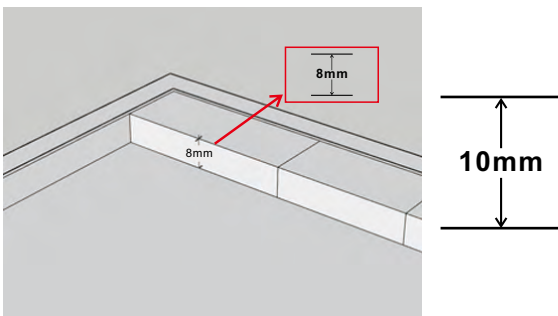


Raised floor

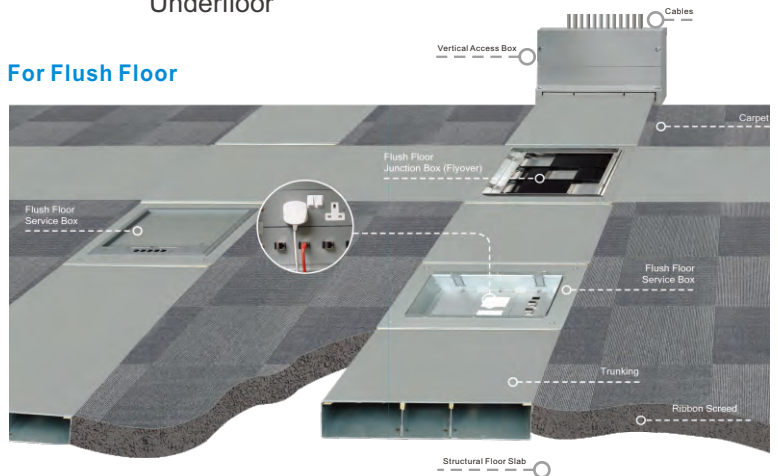


Underfloor

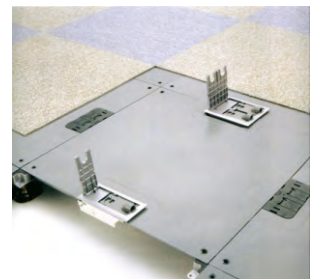
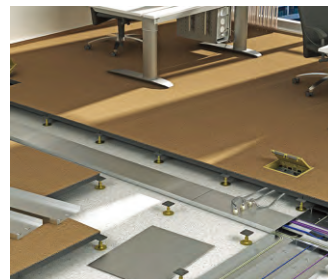
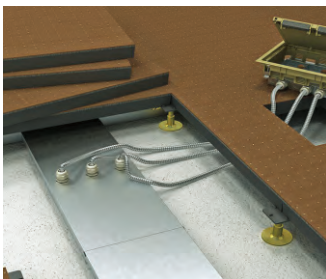
5. Max.8/10mm cavity for marble/carpet



For Flush Floor



For Raised Floor Box



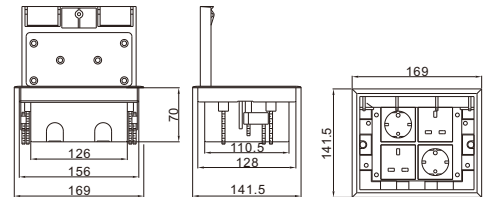
SCF: Underfloor/Raised floor box

HTD-622AS/SS/SP-45



Panel Material	AS	8mm Thickness of concavity		
	SS	Plastic		
	SP	Stainless Steel		
Panel Dimension (mm)	169*141.5			
Cutout (mm)	(130-135)*(157-165)*(76-110)			
Capacity Of Modules	8 ways 45modules			
Applicable	Raised floor			
G.W/CTN(KGS)	MEASUREMENT/CTN(CM)	TOTAL(M ²)	Set/CTN	
11.5	41*36*32	0.0472	12	

Outline Drawing:

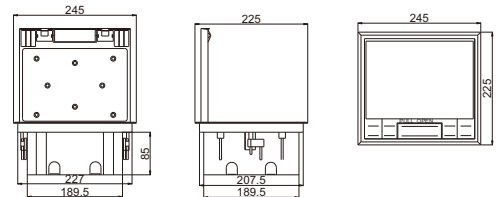


HTD-624B



Panel Material	AS	8mm Thickness of concavity		
	SS	Plastic		
	SP	Stainless Steel		
Panel Dimension (mm)	245*225			
Cutout (mm)	213*233			
Capacity Of Modules	86*86mm switch socket*4			
Applicable	Raised floor			
G.W/CTN(KGS)	MEASUREMENT/CTN(CM)	TOTAL(M ²)	Set/CTN	
11.2	53.5*29.5*48	0.0734	8	

Outline Drawing:

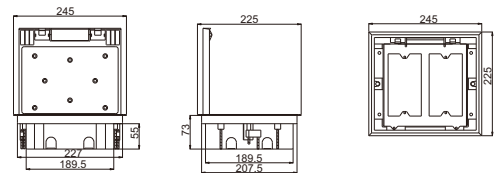


HTD-624AS/SS/SP-120



Panel Material	AS	8mm Thickness of concavity		
	SS	Plastic		
	SP	Stainless Steel		
Panel Dimension (mm)	245*225			
Cutout (mm)	(210-215)*(230-235)*(76-110)			
Capacity Of Modules	120 type module*2			
Applicable	Raised floor			
G.W/CTN(KGS)	MEASUREMENT/CTN(CM)	TOTAL(M ²)	Set/CTN	
11.2	53.5*29.5*48	0.0758	8	

Outline Drawing:

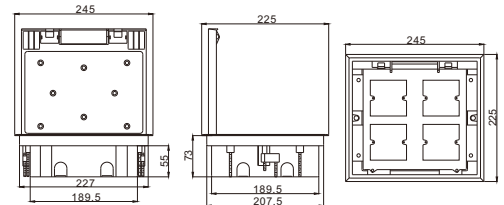


HTD-624AS/SS/SP-86



Panel Material	AS	8mm Thickness of concavity		
	SS	Plastic		
	SP	Stainless Steel		
Panel Dimension (mm)	245*225			
Cutout (mm)	(210-215)*(230-235)*(76-110)			
Capacity Of Modules	86*86mm module socket *4			
Applicable	Raised floor			
G.W/CTN(KGS)	MEASUREMENT/CTN(CM)	TOTAL(M ³)	Set/CTN	
11.2	52.5*35.5*24	0.0758	4	

Outline Drawing:

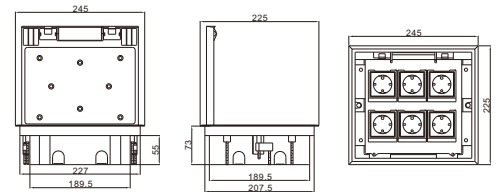


HTD-624AS/SS/SP-45



Panel Material	AS	8mm Thickness of concavity		
	SS	Plastic		
	SP	Stainless Steel		
Panel Dimension (mm)	245*225			
Cutout (mm)	(210-215)*(230-235)*(76-110)			
Capacity Of Modules	12 ways 45modules			
Applicable	Raised floor			
G.W/CTN(KGS)	MEASUREMENT/CTN(CM)	TOTAL(M ³)	Set/CTN	
11.2	53.5*29.5*48	0.0758	8	

Outline Drawing:

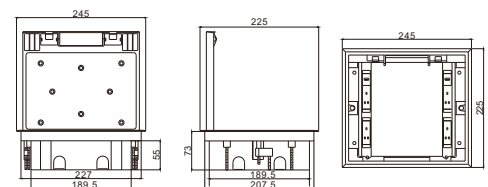


HTD-624C



Panel Material	AS	8mm Thickness of concavity		
	SS	Plastic		
	SP	Stainless Steel		
Panel Dimension (mm)	245*225			
Cutout (mm)	(210-215)*(230-235)*(76-110)			
Capacity Of Modules	12 ways 45modules			
Applicable	Raised floor			
G.W/CTN(KGS)	MEASUREMENT/CTN(CM)	TOTAL(M ³)	Set/CTN	
11.2	53.5*29.5*48	0.0758	8	

Outline Drawing:

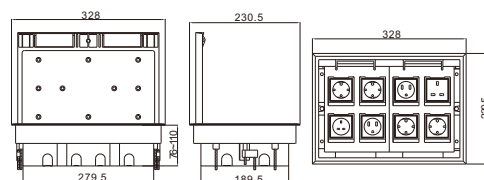


HTD-628AS/SS/SP-45



Panel Material	AS	8mm Thickness of concavity		
	SS	Plastic		
	SP	Stainless Steel		
Panel Dimension (mm)	328*230.5			
Cutout (mm)	(305-310)*(210-215)			
Capacity Of Modules	16 ways 45modules			
Applicable	Raised floor			
G.W/CTN(KGS)	MEASUREMENT/CTN(CM)	TOTAL(M ³)	Set/CTN	
11.2	52.5*35.5*24	0.0447	4	

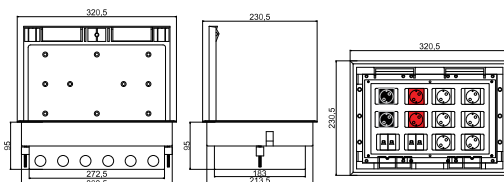
Outline Drawing:



HTD-628AS/SS/SP-4524



Panel Material	AS	8mm Thickness of concavity		
	SS	Plastic		
	SP	Stainless Steel		
Panel Dimension (mm)	328*230.5			
Cutout (mm)	(305-310)*(210-215)			
Capacity Of Modules	24 ways 45modules			
Applicable	Raised floor for ups power supply			
G.W/CTN(KGS)	MEASUREMENT/CTN(CM)	TOTAL(M ³)	Set/CTN	
11.2	52.5*35.5*24	0.0447	4	

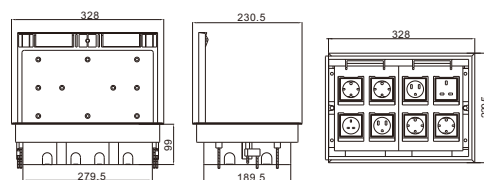


HTD-626B AS/SS/SP-CK



Panel Material	AS	8mm Thickness of concavity		
	SS	Plastic		
	SP	Stainless Steel		
Panel Dimension (mm)	328*230.5			
Cutout (mm)	(305-310)*(210-215)*99			
Capacity Of Modules	16 ways 45modules			
Applicable	Concrete floor			
G.W/CTN(KGS)	MEASUREMENT/CTN(CM)	TOTAL(M ³)	Set/CTN	
11.2	52.5*35.5*24	0.0447	4	

Outline Drawing:

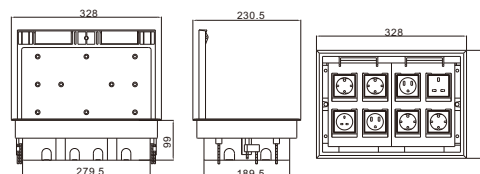


HTD-626AS/SS/SP-45



Panel Material	AS	8mm Thickness of concavity		
	SS	Plastic		
	SP	Stainless Steel		
Panel Dimension (mm)	320.5*230.5			
Cutout (mm)	(305-310)*(210-215)*99			
Capacity Of Modules	16 ways 45modules			
Applicable	Raised floor			
G.W/CTN(KGS)	MEASUREMENT/CTN(CM)	TOTAL(M ³)	Set/CTN	
16.5	55*37*29	0.0590	4	

Outline Drawing:

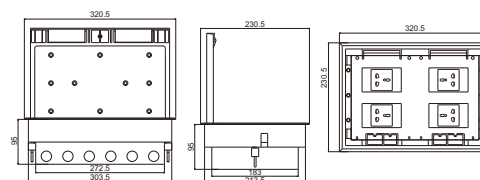


HTD-626AS/SS/SP-120



Panel Material	AS	8mm Thickness of concavity		
	SS	Plastic		
	SP	Stainless Steel		
Panel Dimension (mm)	320.5*230.5			
Cutout (mm)	(305-310)*(210-215)*(76-110)			
Capacity Of Modules	120 type module*4			
Applicable	Raised floor			
G.W/CTN(KGS)	MEASUREMENT/CTN(CM)	TOTAL(M ³)	Set/CTN	
15.5	55*37*29	0.0590	4	

Outline Drawing:

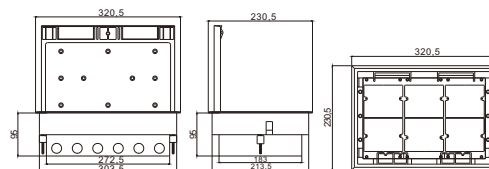


HTD-626AS/SS/SP-86



Panel Material	AS	8mm Thickness of concavity		
	SS	Plastic		
	SP	Stainless Steel		
Panel Dimension (mm)	320.5*230.5			
Cutout (mm)	(305-310)*(210-215)*(76-110)			
Capacity Of Modules	6*86mm module socket *3			
Applicable	Raised floor			
G.W/CTN(KGS)	MEASUREMENT/CTN(CM)	TOTAL(M ³)	Set/CTN	
15.5	55*37*29	0.0590	4	

Outline Drawing:

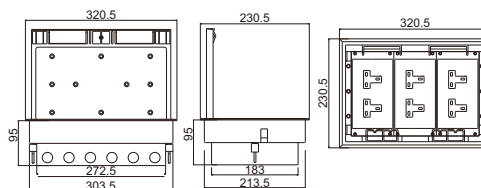


HTD-626RCD



Panel Material	AS	8mm Thickness of concavity		
	SS	Plastic		
	SP	Stainless Steel		
Panel Dimension (mm)	320.5*230.5			
Cutout (mm)	(305-310)*(210-215)*(76-110)			
Capacity Of Modules	86*146mm RCD socket *3			
Applicable	Raised floor			
G.W/CTN(KGS)	MEASUREMENT/CTN(CM)	TOTAL(M ³)	Set/CTN	
16	55*37*29	0.0590	4	

Outline Drawing:

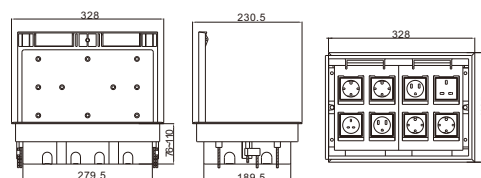


HTD-628AS/SS/SP-C



Panel Material	AS	8mm Thickness of concavity		
	SS	Plastic		
	SP	Stainless Steel		
Panel Dimension (mm)	328*230.5			
Cutout (mm)	(305-310)*(210-215)			
Capacity Of Modules	16 ways 45modules			
Applicable	Concrete floor			
G.W/CTN(KGS)	MEASUREMENT/CTN(CM)	TOTAL(M ³)	Set/CTN	
11.2	52.5*35.5*24	0.0447	4	

Outline Drawing:



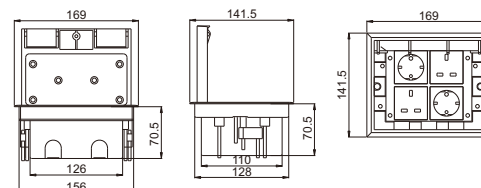
B-H628-C stainless box

HTD-622AS/SS/SP-C



Panel Material	AS	8mm Thickness of concavity		
	SS	Plastic		
	SP	Stainless Steel		
Panel Dimension (mm)	169*141.5			
Cutout (mm)	(130-135)*(157-165)*(76-110)			
Capacity Of Modules	8 ways 45 type modules			
Applicable	Concrete floor			
G.W/CTN(KGS)	MEASUREMENT/CTN(CM)	TOTAL(M ³)	Set/CTN	
11.5	41*26*32	0.0472	12	

Outline Drawing:



B-H622-C stainless box

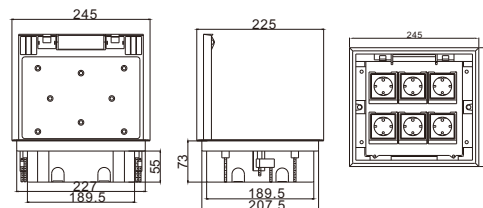


B-H624-C stainless box

HTD-624AS/SS/SP-C

Panel Material	AS	8mm Thickness of concavity		
	SS	Plastic		
	SP	Stainless Steel		
Panel Dimension (mm)	245*225			
Cutout (mm)	(210-215)*(230-235)*(76-110)			
Capacity Of Modules	12 ways 45modules			
Applicable	Concrete floor			
G.W/CTN(KGS)	MEASUREMENT/CTN(CM)	TOTAL(M ³)	Set/CTN	
11.2	53.5*29.5*48	0.0758	8	

Outline Drawing:

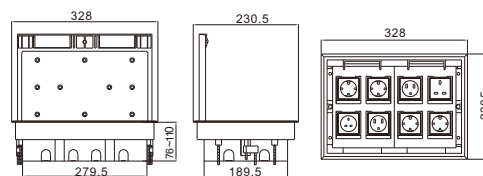


B-H626-C stainless box

HTD-626AS/SS/SP-C

Panel Material	AS	8mm Thickness of concavity		
	SS	Plastic		
	SP	Stainless Steel		
Panel Dimension (mm)	328*230.5			
Cutout (mm)	(305-310)*(210-215)*(76-110)			
Capacity Of Modules	16 ways 45modules			
Applicable	Concrete floor			
G.W/CTN(KGS)	MEASUREMENT/CTN(CM)	TOTAL(M ³)	Set/CTN	
16.5	55*37*29	0.0590	4	

Outline Drawing:

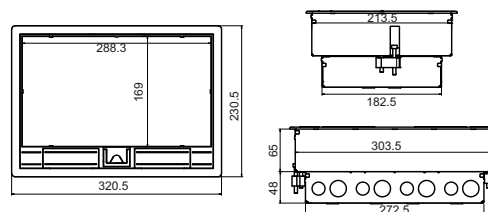


HTD-626B



Panel Material	AS	8mm Thickness of concavity		
	SS	Plastic		
	SP	Stainless Steel		
Panel Dimension (mm)	320.5*230.5			
Cutout (mm)	(305-310)*(210-215)*(76-110)			
Capacity Of Modules	86*146mm module socket *3			
Applicable	Raised floor			
G.W/CTN(KGS)	MEASUREMENT/CTN(CM)	TOTAL(M ³)	Set/CTN	
16	55*37*29	0.0590	4	

Outline Drawing:



HTD-626B Optional Configuration

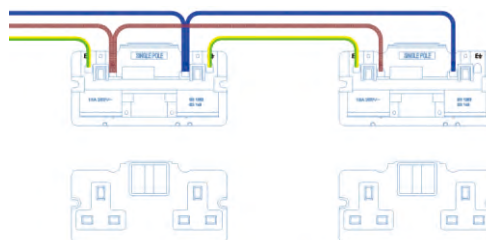
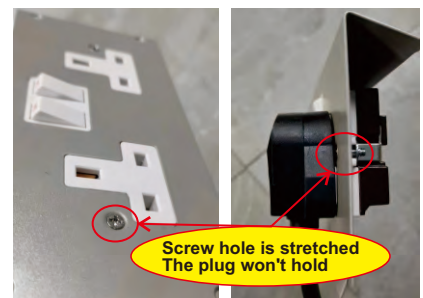
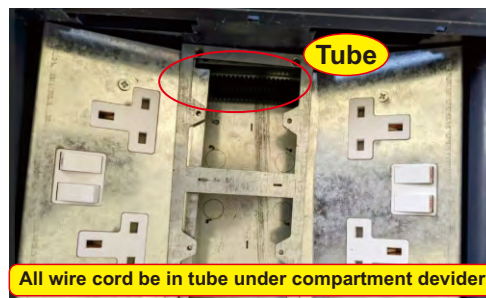
A) 3 compartment

			
146mm side-install&86mm	146mm side-install&45mm	Network module & 86mm&146mm	86mm&Network module
			
120mm bridge	146mm bridge	MCB&146mm Circuit breaker	Item:HTD-626-RCD 146mm bridge

B) 4 compartment

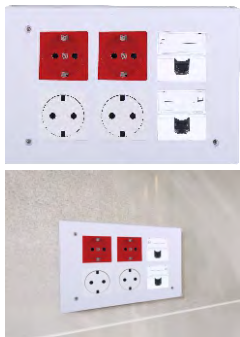

146mm&Network module

C) Selling point



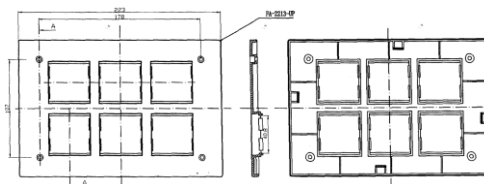
Remark:
 Neutral line: blue
 Fire line: Brown
 Ground wire: yellow-green

HTD-684A



Panel Dimension (mm)	223*107		
Capacity Of Modules	12 ways 45 modules		
Applicable	Wall-mounting		
G.W/CTN(KGS)	MEASUREMENT/CTN(CM)	TOTAL(M ²)	Set/CTN
6.2	45*30*18	0.024	12

Outline Drawing:

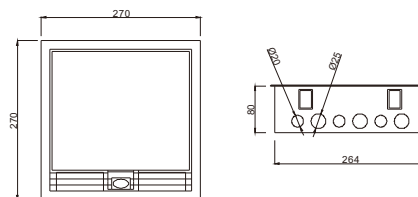


SCF-A01



Panel Material	PC		
Panel Dimension (mm)	270x270		
Cutout (mm)	264x264		
Capacity Of Modules	3compartments/45mm type		
G.W/CTN(KGS)	MEASUREMENT/CTN(CM)	TOTAL(M ²)	Set/CTN
24	59*31*28	0.0512	6

Outline Drawing:

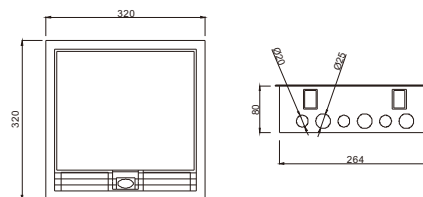


SCF-T01



Panel Material	PC		
Panel Dimension (mm)	320x320		
Cutout (mm)	264x264		
Capacity Of Modules	3compartments/45mm type		
G.W/CTN(KGS)	MEASUREMENT/CTN(CM)	TOTAL(M ²)	Set/CTN
22	59*31*28	0.0512	6

Outline Drawing:

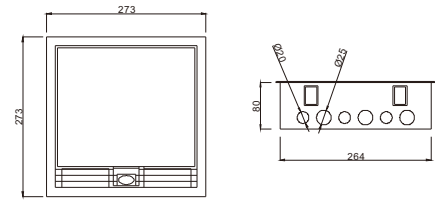


SCF-Q01



Panel Material	PC		
Panel Dimension (mm)	273x273		
Cutout (mm)	264x264		
Capacity Of Modules	3compartments/45mm type		
G.W/CTN(KGS)	MEASUREMENT/CTN(CM)	TOTAL(M ²)	Set/CTN
24	59*31*28	0.0512	6

Outline Drawing:

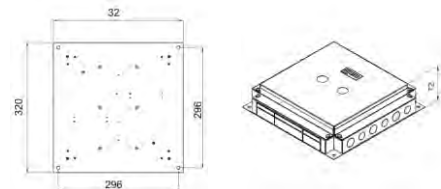


SCF-F01



Panel Material	PC		
Panel Dimension (mm)	320x320		
Cutout (mm)			
Capacity Of Modules	3compartments/45mm type		
G.W/CTN(KGS)	MEASUREMENT/CTN(CM)	TOTAL(M ²)	Set/CTN
22	59*31*28	0.0512	6

Outline Drawing:

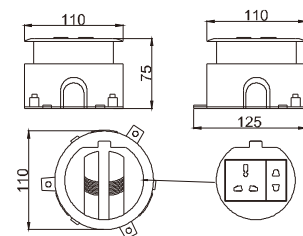


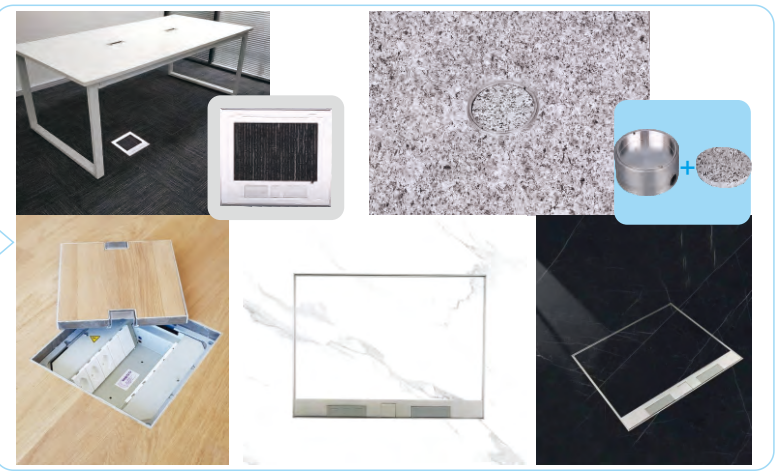
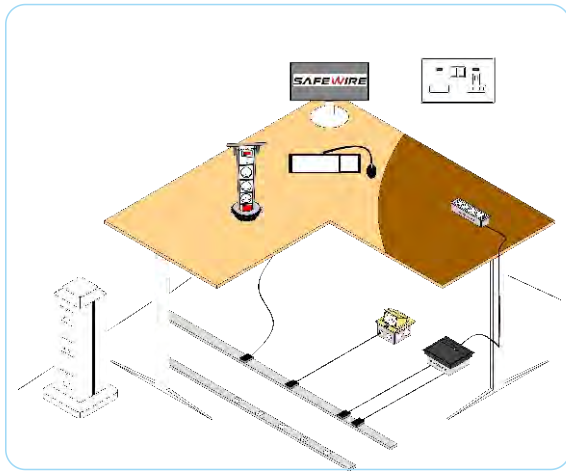
HTD-610S



Panel Material	ABS		
Panel Dimension (mm)	Ø110		
Cutout (mm)	80x80		
Capacity Of Modules	3way 45modules		
G.W/CTN(KGS)	MEASUREMENT/CTN(CM)	TOTAL(M ²)	Set/CTN
3.7	44.5*30.5*21	0.285	12

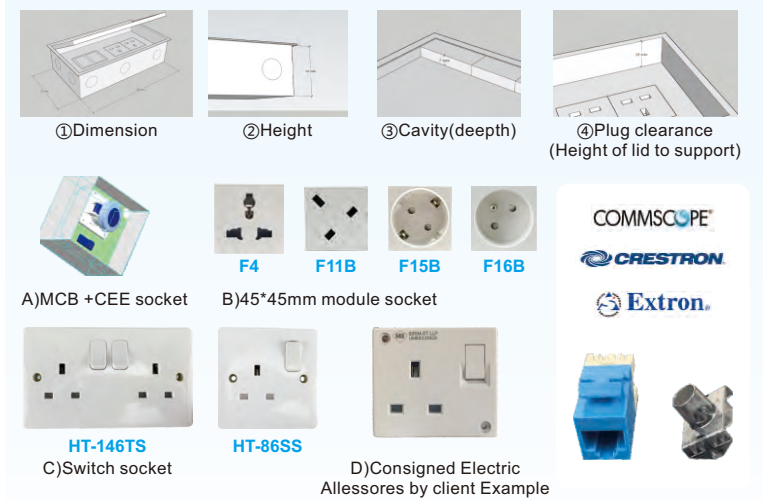
Outline Drawing:





POP Series Features

1. Customization design & production



Access floor & Heavy duty Recess floor



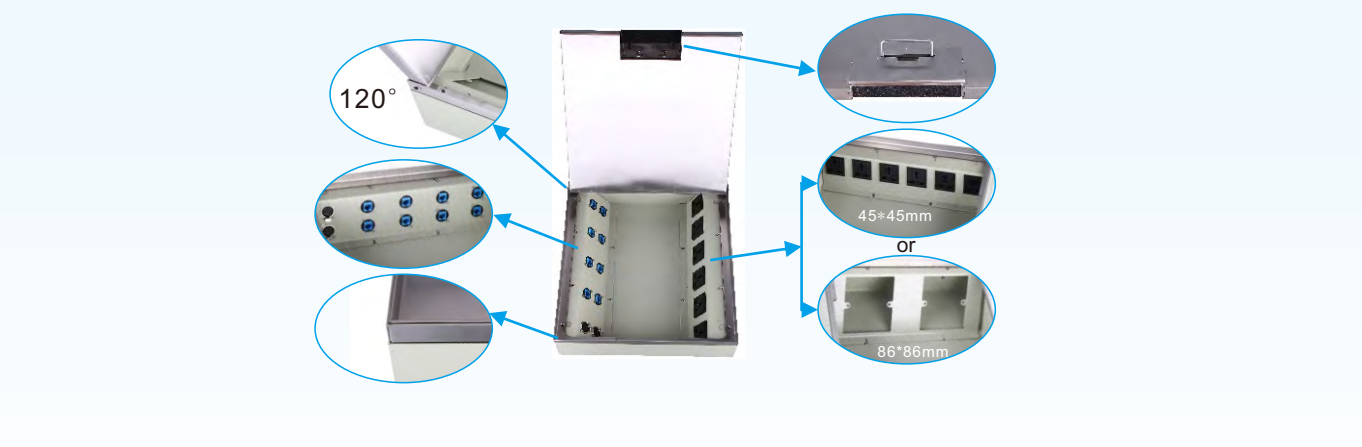
Bridge & Support:



2. Supply with SKD parts or finished products, save cost: save cost, save money for you!



Advantage of Safewire floorbox



Safewire floorbox Application in different floor system



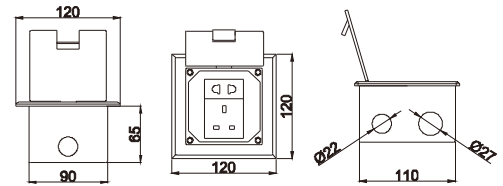
POB: Heavy Duty Floor box

HTD-120A-K/KP



Panel Material	Brass alloy/Stainless steel		
Panel Dimension (mm)	120*120		
Cutout (mm)	113*113		
Capacity Of Modules	3 ways 45 type modules		
G.W/CTN(KGS)	MEASUREMENT/CTN(CM)	TOTAL(M ³)	Set/CTN
21.1	46*25.5*25.5	0.0299	15

Outline Drawing:

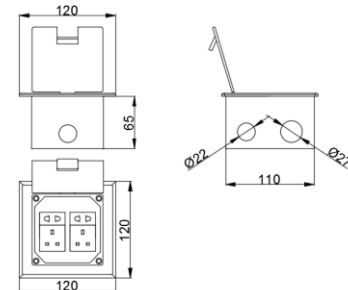


HTD-120B-K/KP



Panel Material	Brass alloy/Stainless steel		
Panel Dimension (mm)	120*120		
Cutout (mm)	113*113		
Capacity Of Modules	4 ways 45 modules		
G.W/CTN(KGS)	MEASUREMENT/CTN(CM)	TOTAL(M ³)	Set/CTN
21.1	46*25.5*25.5	0.0299	15

Outline Drawing:

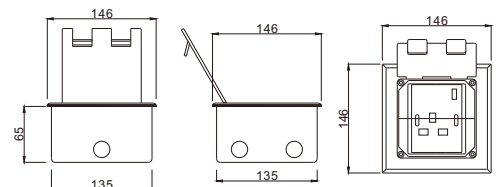


HTD-146K/KP



Panel Material	Brass alloy/Stainless steel		
Panel Dimension (mm)	146*146		
Cutout (mm)	138*138		
Capacity Of Modules	86*86mm modules		
G.W/CTN(KGS)	MEASUREMENT/CTN(CM)	TOTAL(M ³)	Set/CTN
28.9	49*32*22	0.0345	12

Outline Drawing:

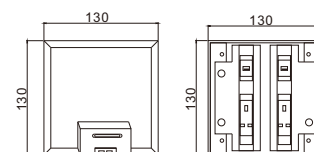


HTD-130-CK

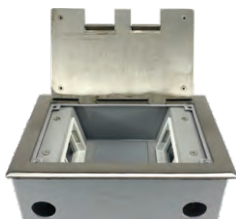


Panel Material	Stainless steel		
Panel Dimension (mm)	130*130		
Cutout (mm)	130*130		
Capacity Of Modules	2*45type or 1*86type outlets		
G.W/CTN(KGS)	MEASUREMENT/CTN(CM)	TOTAL(M ³)	Set/CTN
6.45	32*28*16	0.0143	6

Outline Drawing:

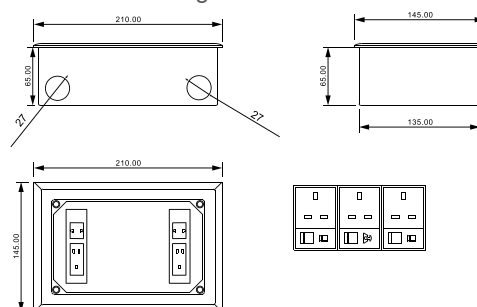


HTD-145CK-CKP



Panel Material	Brass alloy/Stainless steel		
Panel Dimension (mm)	210*145		
Cutout (mm)	203*138		
Capacity Of Modules	6 ways 45 modules		
G.W/CTN(KGS)	MEASUREMENT/CTN(CM)	TOTAL(M ³)	Set/CTN
26.3	17.5*31*23	0.0125	10

Outline Drawing:

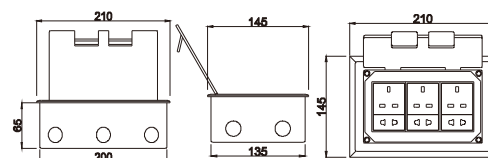


HTD-145K/KP



Panel Material	Brass alloy/Stainless steel		
Panel Dimension (mm)	210*145		
Cutout (mm)	203*138		
Capacity Of Modules	9 ways 45 modules		
G.W/CTN(KGS)	MEASUREMENT/CTN(CM)	TOTAL(M ³)	Set/CTN
26.3	17.5*31*23	0.0125	10

Outline Drawing:

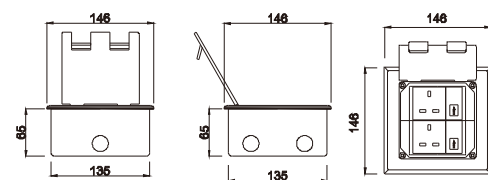


HTD-146K/KP



Panel Material	Brass alloy/Stainless steel		
Panel Dimension (mm)	146*146		
Cutout (mm)	138*138		
Capacity Of Modules	6 ways 45 modules		
G.W/CTN(KGS)	MEASUREMENT/CTN(CM)	TOTAL(M ³)	Set/CTN
27.98	49*32*22	0.0345	12

Outline Drawing:

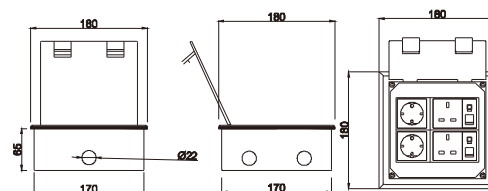


HTD-180K/KP



Panel Material	Brass alloy/Stainless steel		
Panel Dimension (mm)	180*180		
Cutout (mm)	173*173		
Capacity Of Modules	10 ways 45 modules		
G.W/CTN(KGS)	MEASUREMENT/CTN(CM)	TOTAL(M ³)	Set/CTN
27.57	32*55*33	0.0581	10

Outline Drawing:

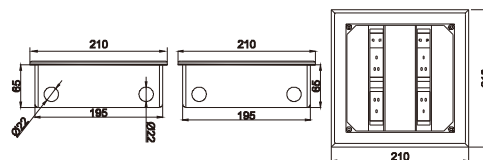


HTD-210CK/CKP



Panel Material	Brass alloy/Stainless steel		
Panel Dimension (mm)	210*210		
Cutout (mm)	198*198		
Capacity Of Modules	10 ways 45 modules		
G.W/CTN(KGS)	MEASUREMENT/CTN(CM)	TOTAL(M ³)	Set/CTN
22.8	47.5*39*27	0.0500	8

Outline Drawing:

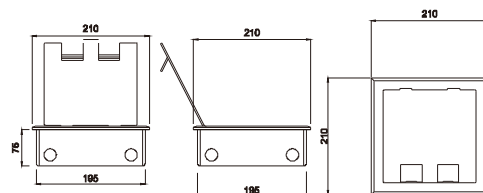


HTD-210K/KP-86



Panel Material	Brass alloy/Stainless steel		
Panel Dimension (mm)	210*210		
Cutout (mm)	198*198		
Capacity Of Modules	86*86mm modules		
G.W/CTN(KGS)	MEASUREMENT/CTN(CM)	TOTAL(M ³)	Set/CTN
38.3	37.3*22*45	0.0369	10

Outline Drawing:

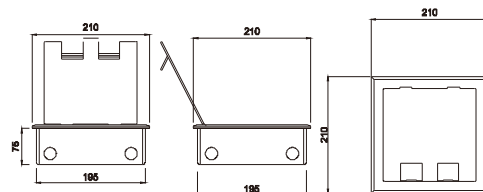


HTD-210K/KP



Panel Material	Brass alloy/Stainless steel		
Panel Dimension (mm)	210*210		
Cutout (mm)	198*198		
Capacity Of Modules	15 ways 45 modules		
G.W/CTN(KGS)	MEASUREMENT/CTN(CM)	TOTAL(M ³)	Set/CTN
38.3	37.3*22*45	0.0369	10

Outline Drawing:

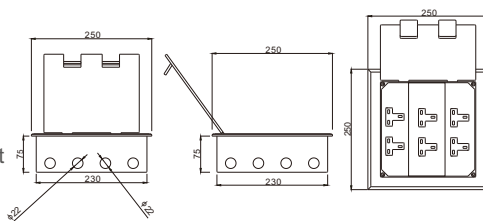


HTD-250K/KP-86



Panel Material	Brass alloy/Stainless steel		
Panel Dimension (mm)	250*250		
Cutout (mm)	232*202		
Capacity Of Modules	3*2gang compartments switch socket		
G.W/CTN(KGS)	MEASUREMENT/CTN(CM)	TOTAL(M ³)	Set/CTN
27.55	47.5*39*27	0.0500	10

Outline Drawing:

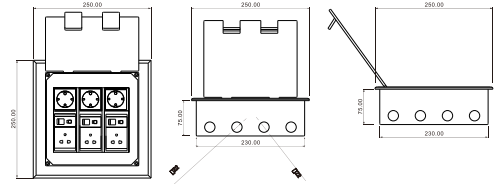


HTD-250K/KP



Panel Material	Brass alloy/Stainless steel		
Panel Dimension (mm)	250*250		
Cutout (mm)	233*233		
Capacity Of Modules	15 ways 45 modules		
G.W/CTN(KGS)	MEASUREMENT/CTN(CM)	TOTAL(M ³)	Set/CTN
27.55	47.5*39*27	0.0500	10

Outline Drawing:

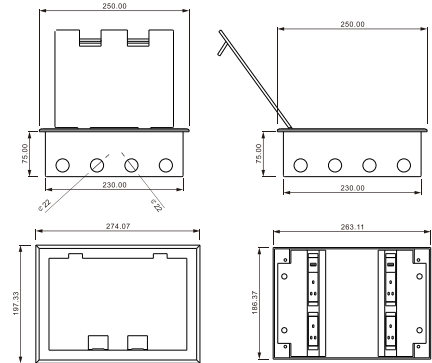


HTD-250CK



Panel Material	Stainless steel		
Panel Dimension (mm)	250*250		
Cutout (mm)	245*245		
Capacity Of Modules	side-mounting gangs		
G.W/CTN(KGS)	MEASUREMENT/CTN(CM)	TOTAL(M ³)	Set/CTN
27.55	47.5*39*27	0.0500	10

Outline Drawing:

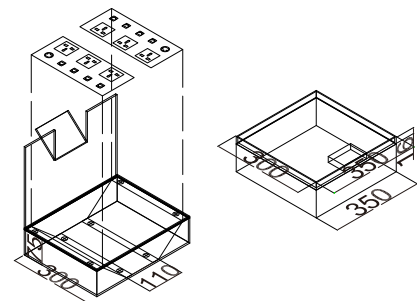


HTD-320K/KP-230



Panel Material	Brass alloy/Stainless steel		
Panel Dimension (mm)	320*230		
Cutout (mm)	302*212		
Capacity Of Modules	Side-mounting Gangs		
G.W/CTN(KGS)	MEASUREMENT/CTN(CM)	TOTAL(M ³)	Set/CTN
27.55	47.5*39*27	0.0500	10

Outline Drawing:

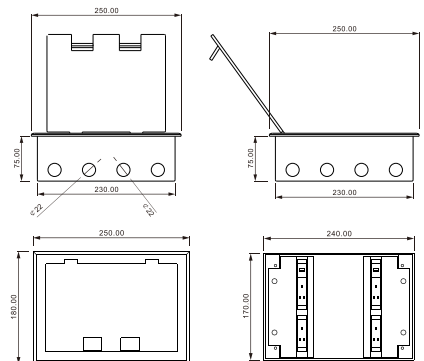


HTD-250K/KP-C



Panel Material	Stainless Steel		
Panel Dimension (mm)	250*250		
Cutout (mm)	245*245		
Capacity Of Modules	Side-mounting Gangs		
G.W/CTN(KGS)	MEASUREMENT/CTN(CM)	TOTAL(M ³)	Set/CTN
27.55	47.5*39*27	0.0500	10

Outline Drawing:

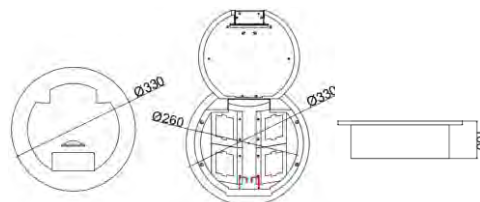


HTD-290K/KP



Panel Material	Brass alloy/Stainless steel		
Panel Dimension (mm)	φ 130		
Cutout (mm)	122*122		
Capacity Of Modules	2 ways modules		
G.W/CTN(KGS)	MEASUREMENT/CTN(CM)	TOTAL(M ³)	Set/CTN
217	54*31*27	0.452	60

Outline Drawing:

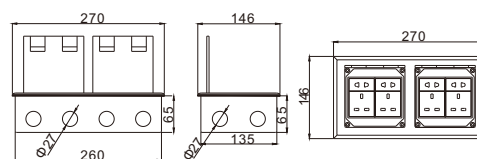


HTD-2702K/KP



Panel Material	Brass alloy/Stainless steel		
Panel Dimension (mm)	270*146		
Cutout (mm)	263*138		
Capacity Of Modules	12 ways 45 modules		
G.W/CTN(KGS)	MEASUREMENT/CTN(CM)	TOTAL(M ³)	Set/CTN
26.3	17.5*31*23	0.0125	10

Outline Drawing:

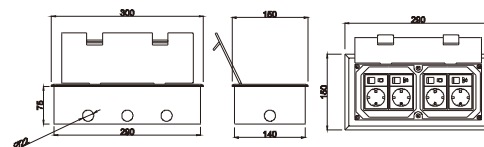


HTD-300K/KP

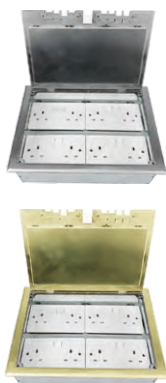


Panel Material	Brass alloy/Stainless steel		
Panel Dimension (mm)	300*150		
Cutout (mm)	293x143		
Capacity Of Modules	12 ways 45 modules		
G.W/CTN(KGS)	MEASUREMENT/CTN(CM)	TOTAL(M ³)	Set/CTN
26.3	17.5*31*23	0.0125	10

Outline Drawing:

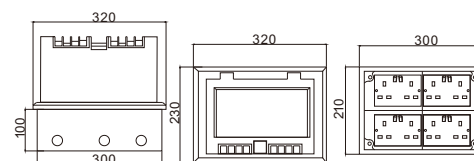


HTD-320K/KP-86



Panel Material	Brass alloy/Stainless steel		
Panel Dimension (mm)	320*230		
Cutout (mm)	302*212		
Capacity Of Modules	4*2gang compartments switch socket		
G.W/CTN(KGS)	MEASUREMENT/CTN(CM)	TOTAL(M ³)	Set/CTN
27.55	47.5*39*27	0.0500	10

Outline Drawing:

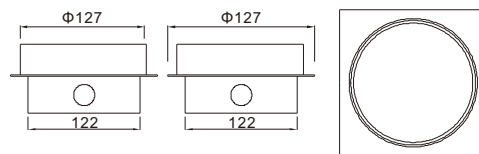


HTD-127ZAP



Panel Material	Stainless steel		
Panel Dimension (mm)	127*127		
Cutout (mm)	125*125		
Capacity Of Modules	3 ways modules		
G.W/CTN(KGS)	MEASUREMENT/CTN(CM)	TOTAL(M ³)	Set/CTN
6.45	32*28*16	0.0143	6

Outline Drawing:

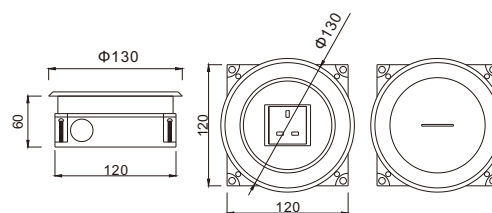


HTD-130LK/LXP



Panel Material	Brass alloy/Stainless steel		
Panel Dimension (mm)	φ 130		
Cutout (mm)	122*122		
Capacity Of Modules	2 ways modules		
G.W/CTN(KGS)	MEASUREMENT/CTN(CM)	TOTAL(M ³)	Set/CTN
6.45	32*28*16	0.0143	6

Outline Drawing:

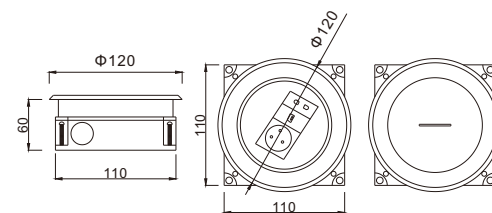


HTD-120E



Panel Material	Brass alloy/Stainless steel		
Panel Dimension (mm)	∅120		
Cutout (mm)	120*120*60		
Capacity Of Modules	4 ways modules		
G.W/CTN(KGS)	MEASUREMENT/CTN(CM)	TOTAL(M ³)	Set/CTN
6.45	32*28*16	0.0143	6

Outline Drawing:

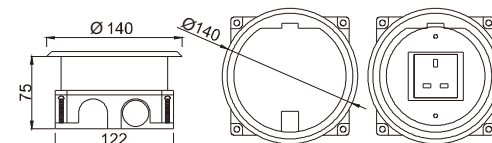


HTD-140YK/YKP



Panel Material	Brass alloy/Stainless steel		
Panel Dimension (mm)	φ140		
Cutout (mm)	125*125		
Capacity Of Modules	2 ways modules		
G.W/CTN(KGS)	MEASUREMENT/CTN(CM)	TOTAL(M ³)	Set/CTN
14.25	32*29*32	0.0297	12

Outline Drawing:

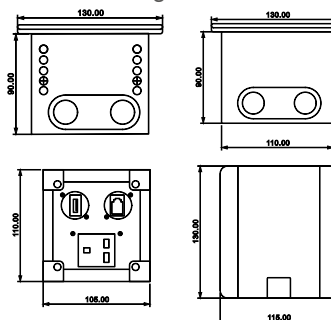


HTD-120-AV



Panel Material		Stainless Steel	
Panel Dimension (mm)		130*115	
Cutout (mm)		103*103	
Capacity Of Modules		Customization AV socket	
G.W/CTN(KGS)	MEASUREMENT/CTN(CM)	TOTAL(M ³)	Set/CTN
38.3	37.3*22*45	0.0369	10

Outline Drawing:

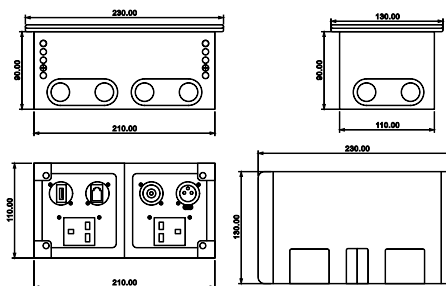


HTD-220-AV



Panel Material		Stainless Steel	
Panel Dimension (mm)		230*130	
Cutout (mm)		210*110	
Capacity Of Modules		Customization AV socket	
G.W/CTN(KGS)	MEASUREMENT/CTN(CM)	TOTAL(M ³)	Set/CTN
26.3	17.5*31*23	0.0125	10

Outline Drawing:

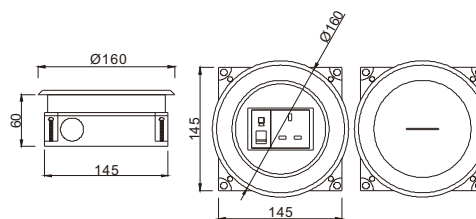


HTD-160LX



Panel Material		Brass alloy/Sta	
Panel Dimension (mm)		Φ160	
Cutout (mm)		148*148	
Capacity Of Modules		2 ways modules	
G.W/CTN(KGS)	MEASUREMENT/CTN(CM)	TOTAL(M ³)	Set/CTN
6.45	32*28*16	0.0143	6

Outline Drawing:

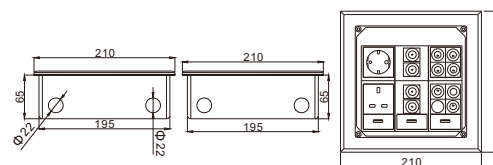


HTD-210-AV



AS Panel Material		Brass alloy/Stainless steel	
Panel Dimension (mm)		210*210	
Cutout (mm)		198*198	
Capacity Of Modules		Custom AV socket	
G.W/CTN(KGS)	MEASUREMENT/CTN(CM)	TOTAL(M ³)	Set/CTN
27.55	47.5*39*27	0.0500	10

Outline Drawing:

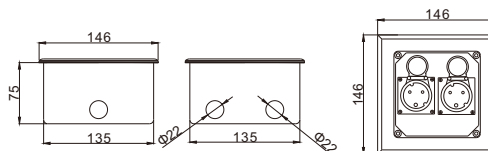


HTD-146-I



AS Panel Material	Stainless steel Brass Alloy		
Panel Dimension (mm)	146*146		
Cutout (mm)	138*138		
Capacity Of Modules	2 * IP66 Low pressure socket		
G.W/CTN(KGS)	MEASUREMENT/CTN(CM)	TOTAL(M ³)	Set/CTN
27.98	49*32*22	0.0345	12

Outline Drawing:

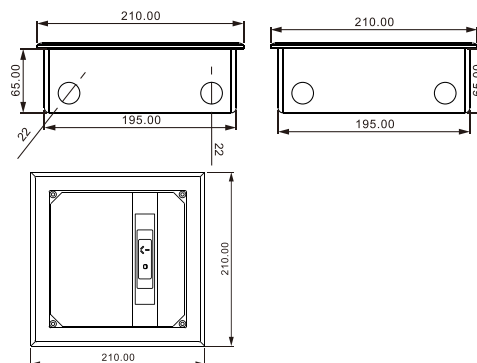


HTD-210C



AS Panel Material	Stainless steel or brass		
Panel Dimension (mm)	210*210		
Cutout (mm)	195*195		
Capacity Of Modules	1way 86 modules		
G.W/CTN(KGS)	MEASUREMENT/CTN(CM)	TOTAL(M ³)	Set/CTN
27.55	47.5*39*27	0.0500	10

Outline Drawing:



The HTD-210C product is a configurable module:



AS302

1 G 2 way switch horizontal



AS315

10A horizontal double powerpoints



AS315-USB(2A)

10A USB horizontal double powerpoints 2A



AS320

1 G TV socket



AS322

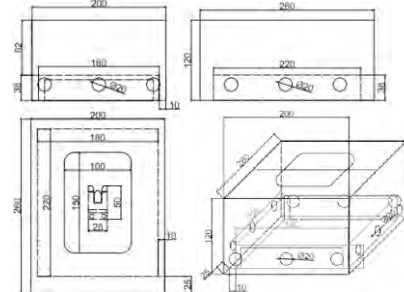
TV socket+ Tel socket

SF-DBMI-01



AS Panel Material	iron spray paint		
Panel Dimension (mm)	200*260*120mm		
Cutout (mm)	10*15cm		
Capacity Of Modules	Red(RAL2005), Grey		
G.W/CTN(KGS)	MEASUREMENT/CTN(CM)	TOTAL(M ³)	Set/CTN
27.98	49*32*22	0.0345	12

Outline Drawing:

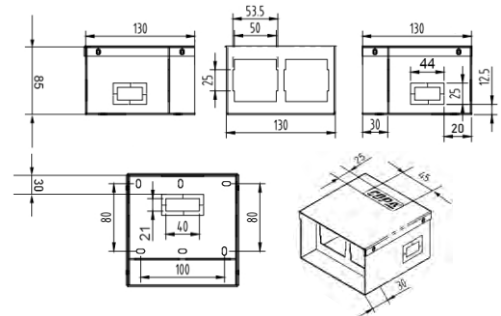


SF-DBMU-01

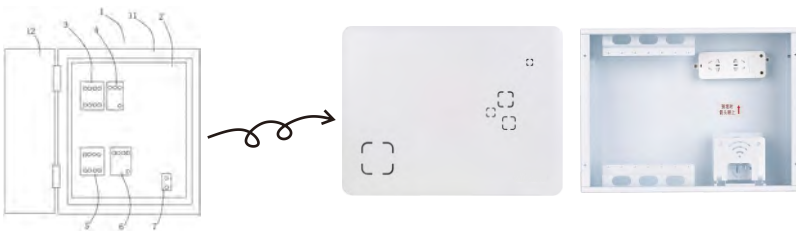


AS Panel Material	Iron spray paint, Cold plate		
Panel Dimension (mm)	130*130*85mm		
Cutout (mm)	53.5*53.5mm		
Capacity Of Modules	4 way 45*22.5mm modules		
G.W/CTN(KGS)	MEASUREMENT/CTN(CM)	TOTAL(M ³)	Set/CTN
27.98	49*32*22	0.0345	12


Outline Drawing:




1.OEM&ODM as per your sample or drawing.




Design&production, from“0”to“1”



3D printing



CAD mechanical design



Hand-painted

2.Metal MCB box, glass panel box, fiber optic box and WiFi panel box etc.



1. Distribution Box

1.1 Distribution Box for Housing with Metal box



P/N	Rows	Specification	Cover dimension(mm)	Box dimension(mm)
LYB1-9	1	9	240x200x105	217x180x85
LYB1-12	1	12	295x200x105	270x180x85
LYB1-16	1	16	366x240x105	340x220x85
LYB1-20	1	20	438x240x105	412x220x85
LYB1-24	2	24	295x400x105	270x380x85
LYB1-32	2	32	295x600x105	270x580x85
LYB1-40	2	40	438x480x105	412x460x85
LYB1-48	3	48	366x720x105	340x700x85
LYB1-60	3	60	438x720x105	412x700x85

1.2 Distribution Box for Housing with Metal box



P/N	Rows	Specification	Cover dimension(mm)	Box dimension(mm)
LYB4-4	1	4	150x170x110	130x150x95
LYB4-6	1	6	193x220x110	173x200x95
LYB4-8	1	8	240x220x110	220x200x95
LYB4-10	1	10	286x240x110	263x220x95
LYB4-12	1	12	320x240x110	300x220x95
LYB4-15	1	15	374x240x110	354x220x95
LYB4-18	1	18	428x240x110	408x220x95
LYB4-20	1	20	464x240x110	444x220x95
LYB4-24	1	24	536x240x110	516x220x95
LYB4-24	2	24	320x480x110	300x460x95
LYB4-30	2	30	374x480x110	354x460x95
LYB4-36	2	36	428x480x110	408x460x95
LYB4-40	2	40	464x480x110	444x460x95
LYB4-45	3	45	374x680x110	354x660x95
LYB4-54	3	54	428x680x110	408x660x95
LYB4-60	3	60	464x680x110	444x660x95

1.3 Distribution Box for Housing with Metal box



P/N	Specification	Cover dimension(mm)	Box dimension(mm)
LYM3-4	4	141x160x90	120x143x75
LYM3-6	6	180x210x90	158.5x192x75
LYM3-9	9	234x210x90	212.5x192x75
LYM3-13	13	306x210x90	283.5x192x75
LYM3-16	16	360x210x90	338.5x192x75
LYM3-20	20	432x210x90	409.5x192x75
LYM3-26	26	306x420x90	283.5x395x75
LYM3-32	32	360x420x90	338.5x395x75
LYM3-40	40	432x420x90	409.5x395x75

1.4 Distribution Box for Housing with Metal box



P/N	Rows	Specification	Cover dimension (mm)	Box dimension (mm)
LYB5-9	1	9	240x200x95	217x180x75
LYB5-12	1	12	295x230x95	270x210x75
LYB5-16	1	16	366x230x95	340x210x75
LYB5-20	1	20	438x230x95	413x210x75
LYB5-24	2	24	295x460x95	270x440x75
LYB5-32	2	32	366x460x95	340x440x75
LYB5-36	3	36	295x690x95	270x670x75
LYB5-40	2	40	438x460x95	413x440x75
LYB5-48	3	48	366x690x95	340x670x75
LYB5-60	3	60	438x690x95	413x670x75

1.5 Distribution Box for Housing with Metal box



P/N	Rows	Specification	Cover dimension(mm)	Box dimension(mm)
LYB6-8	1	9	260x230x110	235x200x85
LYB6-12	1	12	325x225x110	305x220x85
LYB6-16	1	16	400x255x110	375x220x85
LYB6-20	1	20	470x255x110	450x220x85
LYB6-24	2	24	318x384x110	290x355x85
LYB6-32	2	32	400x520x110	375x485x85
LYB6-40	2	40	470x520x110	450x485x85
LYB6-48	3	48	400x785x110	375x750x85
LYB6-60	3	60	470x785x110	450x750x85

1.6 Distribution Box for Housing with Metal box



P/N	Rows	Specification	Cover dimension(mm)	Box dimension(mm)
LYB8-8	1	8	236x240x105	206x220x95
LYB8-10	1	10	284x240x105	254x220x95
LYB8-12	1	12	320x240x105	290x220x95
LYB8-16	1	16	392x240x105	362x220x95
LYB8-20	1	20	464x240x105	434x220x95
LYB8-24	2	24	320x390x105	290x360x95
LYB8-32	2	32	392x390x105	362x360x95
LYB8-40	2	40	464x390x105	434x360x95
LYB8-48	3	48	392x566x105	362x536x95
LYB8-60	3	60	464x566x105	434x536x95

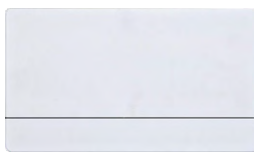
1.7 Distribution Box for Housing with Metal box



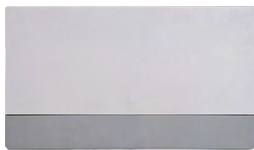
P/N	Specification	Cover dimension (mm)	Box dimension (mm)
LYB9-16	1 16	366x240x105	340x220x85
LYB9-20	1 20	438x240x105	412x220x85
LYB9-32	2 32	295x600x105	270x580x85
LYB9-40	2 40	438x480x105	412x460x85
LYB9-48	3 48	366x720x105	340x700x85
LYB9-60	3 60	438x720x105	412x700x85



1.8 Distribution Box for Housing with Metal box



P/N	Specification	Cover dimension(mm)	Box dimension(mm)
LYM1-12	12	294x210x95	268x190x75
LYM1-16	16	366x210x95	340x190x75
LYM1-20	20	438x210x95	412x190x75
LYM1-24	24	268x315x95	268x315x75
LYM1-32	32	366x420x95	340x360x75
LYM1-40	40	438x420x95	412x360x75
LYM1-48	48	366x630x95	340x550x75
LYM1-60	60	438x630x95	412x550x75
LYM1-16D	16	366x230x95	340x210x75
LYM1-20D	20	438x230x95	412x210x75

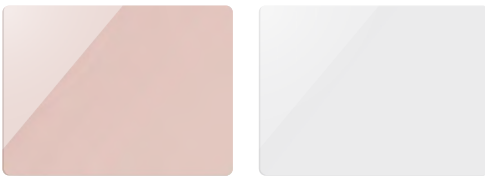


1.9 Intelligent Household Multimedia Information Box



P/N	Specification	Cover dimension(mm)	Box dimension(mm)
LYM5-10	10	267x228x100	247x210x85
LYM5-12	12	305x228x100	285x210x85
LYM5-15	15	359x250x100	339x230x85
LYM5-18	18	412x250x100	392x230x85
LYM5-21	21	467x250x100	447x230x85
LYM5-24-1	24	521x250x100	501x230x85
LYM5-24-2	24	305x399x100	285x370x85
LYM5-30	30	359x429x100	339x400x85
LYM5-36	36	412x429x100	392x400x85

1.10 Glass panel Intelligent Household Multimedia Information Box



P/N	Cover dimension(mm)	Box dimension(mm)
LYX1-02C	270x320x100	300x350x120
LYX1-02D	270x370x100	300x400x120
LYX1-02E	270x420x100	300x450x120
LYX1-02F	270x470x100	300x500x120
LYX1-02G	270x470x100	300x500x120

1.11 Intelligent Household Multimedia Information Box



P/N	Cover dimension(mm)	Box dimension(mm)
LYX1-03A	300x200x100	330x230x120
LYX1-03AX	300x200x100	330x230x120

1.12 Fiber Optic Multimedia Information Box



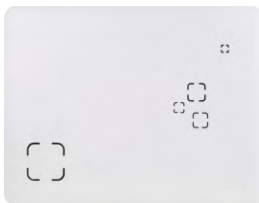
P/N	Cover dimension(mm)	Box dimension(mm)
LYX1-08A	300x250x120	330x280x140
LYX1-08C	300x350x120	330x380x140
LYX1-08D	300x400x120	330x430x140

1.13 Fiber Optic Multimedia Information Box



P/N	Cover dimension(mm)	Box dimension(mm)
LYX2-08A	330x280x140	300x250x120
LYX2-08C	380x330x140	350x300x120
LYX2-08D	430x330x140	400x300x120
LYX2-08E	480x330x140	450x300x120
LYX2-08F	530x330x140	500x300x120
LYX2-08S	330x430x140	300x400x120

1.14 Fiber Optic Multimedia Information Box



P/N	Cover dimension(mm)	Box dimension(mm)
LYX-09D	330x430x140	300x400x120

1.15 PANEL WIFI

Product configuration and functions



LYW-AP101
 PANEL WIFI

Embedded in traditional wall switch 86 cassette;
 11N wireless technology, 300Mbps wireless rate;
 Easy installation, no configuration, installation more beautiful and simple;
 Good compatibility with smart phones, tablets, laptops, netbooks, etc;
 Support AP wireless access point Repeater (wireless terminal), Router (wireless routing), Bridge (wireless bridge) and other working modes to provide LAN/WAN wired socket;
 Non-standard POE power supply.












LYW-AP111
 PANEL WIFI

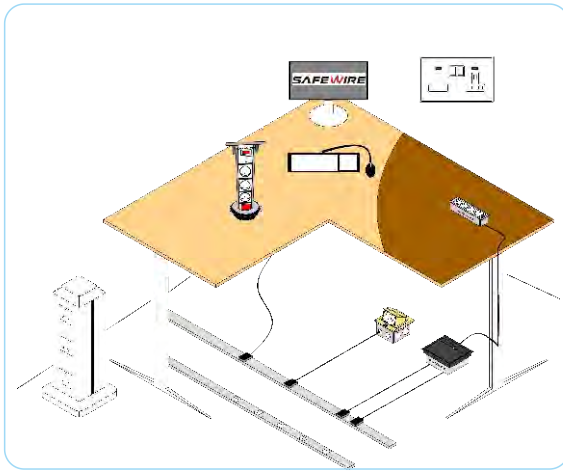
Embedded in traditional wall switch 86 cassette;
 11N wireless technology, 300Mbps wireless rate;
 Easy installation, no configuration, installation more beautiful and simple;
 Good compatibility with smart phones, tablets, laptops, netbooks, etc;
 Support AP wireless access point Repeater (wireless terminal), Router (wireless routing), Bridge (wireless bridge) and other working modes to provide LAN/WAN wired socket;
 High voltage power supply.

1.16 Fibre Optical Module

P/N		P/N	
LYX-B301 POE routing module		LYX-B302 POE routing module	
LYX-B307 POE switch module		LYX-B307 POE switch module	

1.16 Fibre Optical Module

P/N		P/N	
LYX-A301 Communication module		LYX-A304 Communication module	
LYX-B305 Data module		LYX-C301 Cable TV signal module	
LYX-C302 Cable TV signal module		LYX-C303 TV and telephone integrated module	
LYX-E301 Switching power module		LYX-G301 Fill module	
LYX-G302 Fill module			



SOB Features

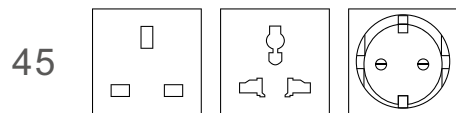
1. 3/4/6/8 ways 45*45mm modules inside.

2. Silver/Black/Brass/White/Nickel etc. colour.

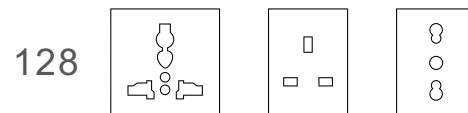


3. More International Socket, multimedia and Data accessories: BS/EU/UL/Universal/SAA Standard.

1. 45*45mm Modules



2. 128 Type series











- 3 ways/4 ways/6 ways/8 ways module socket to be installed.
- Stainless Steel Color/Black Color/ Aluminum Alloy Color/Copper Color /White Color
- 45/128 type module socket.



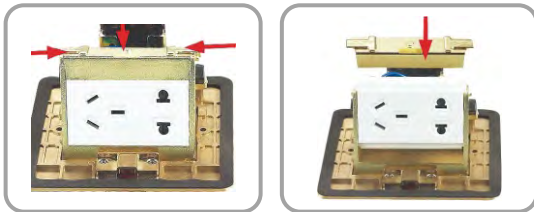
Advantage of Safewire floorbox

1. Color Sample (Remark: or refer to RAL or Pantone):

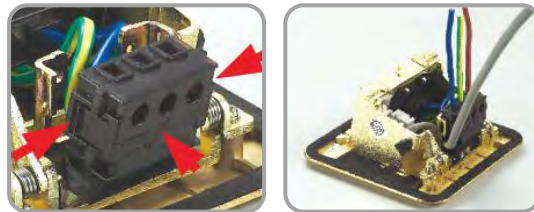
							
Br: Brass H62	P: stainless 304	L: aluminum alloy	Ch: chrome	NK: nickel	ZI: zinc	Pb: powder peal black	BZ: bronze

2. Easy-Installation & Fast-wiring

1. Easy-Installation



2. Fast-Wiring



3. Reliable Quality Certificated by TUV , Germany



Weight: 288g

E-mail: happyhe@safewirele.com
Web: www.safewirele.com



Thickness: 1.35mm

E-mail: happyhe@safewirele.com
Web: www.safewirele.com



E-mail: happyhe@safewirele.com
Web: www.safewirele.com



Safewire floorbox Application in different floor system



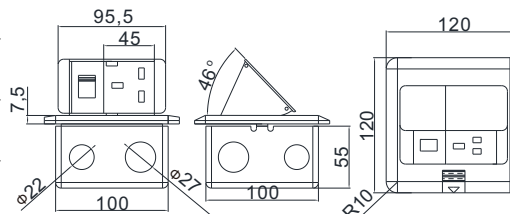
SOB: Serviced Outlet Box

FD201/201L



AS Panel Material	Brass alloy/Alu alloy		
Panel Dimension (mm)	120*120		
Cutout (mm)	103*103		
Capacity Of Modules	3 ways 45 type modules		
G.W/CTN(KGS)	MEASUREMENT/CTN(CM)	TOTAL(M ³)	Set/CTN
14.15	43*27*26.5	0.0308	20

Outline Drawing:

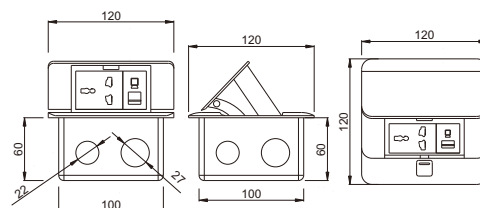


FD-221



AS Panel Material	Brass alloy		
Panel Dimension (mm)	120*120		
Cutout (mm)	103*103		
Capacity Of Modules	3 ways 45 type modules		
G.W/CTN(KGS)	MEASUREMENT/CTN(CM)	TOTAL(M ³)	Set/CTN
18	41.5*27*27	0.0303	20

Outline Drawing:

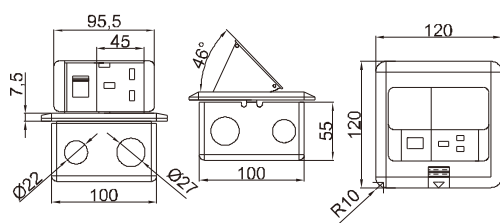


HTD-1/1L



AS Panel Material	Brass alloy		
Panel Dimension (mm)	120*120		
Cutout (mm)	103*103		
Capacity Of Modules	3 ways 45 type modules		
G.W/CTN(KGS)	MEASUREMENT/CTN(CM)	TOTAL(M ³)	Set/CTN
22.5	41.5*27*27	0.0303	15

Outline Drawing:

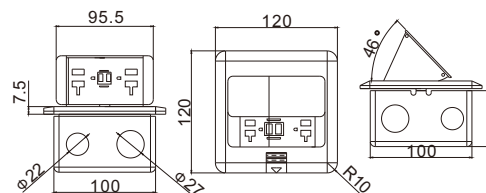


HTD-J02L



AS Panel Material	Brass alloy/Alu alloy		
Panel Dimension (mm)	120*120		
Cutout (mm)	103x103		
Capacity Of Modules	GFCI module with USB port		
G.W/CTN(KGS)	MEASUREMENT/CTN(CM)	TOTAL(M ³)	Set/CTN
22.5	41.5*27*27	0.0303	15

Outline Drawing:

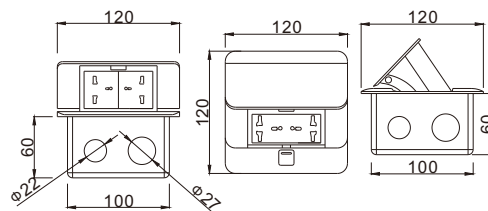


HTD-J02N



AS Panel Material	Bevelled square brass/Nickel chrome		
Panel Dimension (mm)	120*120		
Cutout (mm)	103x103		
Capacity Of Modules	4 ways 45 type modules		
G.W/CTN(KGS)	MEASUREMENT/CTN(CM)	TOTAL(M ³)	Set/CTN
22.3	44*28*27.3	0.0336	20

Outline Drawing:

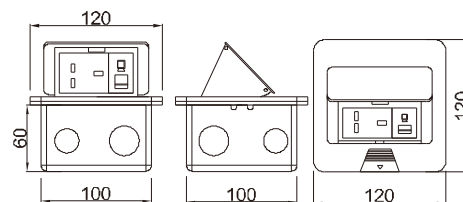


HTD-2/2P



AS Panel Material	Brass alloy/Alu alloy		
Panel Dimension (mm)	120*120		
Cutout (mm)	105x105		
Capacity Of Modules	3 ways 45 type modules		
G.W/CTN(KGS)	MEASUREMENT/CTN(CM)	TOTAL(M ³)	Set/CTN
22.3	44*28*27.3	0.0336	20

Outline Drawing:

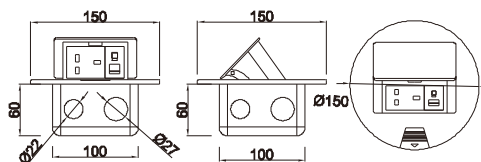


HTD-3/3P



AS Panel Material	Brass alloy/Alu alloy		
Panel Dimension (mm)	Ø150		
Cutout (mm)	105*105		
Capacity Of Modules	3 ways 45 type modules		
G.W/CTN(KGS)	MEASUREMENT/CTN(CM)	TOTAL(M ³)	Set/CTN
115	41.5*32.5*32.5	0.0438	20

Outline Drawing:

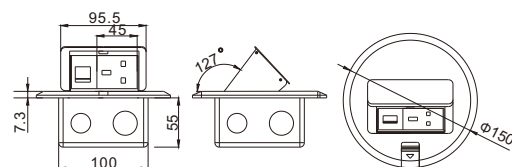


HTD-7/7L



AS Panel Material	Brass alloy/Stainless alloy		
Panel Dimension (mm)	Ø150		
Cutout (mm)	103*103		
Capacity Of Modules	3 ways 45 type modules		
G.W/CTN(KGS)	MEASUREMENT/CTN(CM)	TOTAL(M ³)	Set/CTN
17.5	41.5*32.5*32.5	0.0438	20

Outline Drawing:

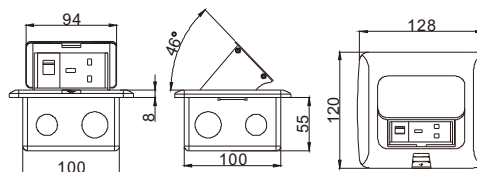


HTD-18/18L



AS Panel Material	Brass alloy/Alu alloy		
Panel Dimension (mm)	128*120		
Cutout (mm)	103*103		
Capacity Of Modules	3 ways 45 type modules		
G.W/CTN(KGS)	MEASUREMENT/CTN(CM)	TOTAL(M ³)	Set/CTN
16.8	41.5*27*27	0.0303	20

Outline Drawing:

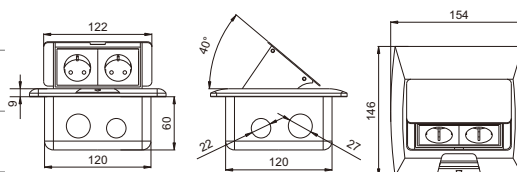


HTD-331L



AS Panel Material	Aluminum alloy		
Panel Dimension (mm)	154*146		
Cutout (mm)	123*123		
Capacity Of Modules	4 ways 45 type modules		
G.W/CTN(KGS)	MEASUREMENT/CTN(CM)	TOTAL(M ³)	Set/CTN
15	49*32*22	0.0345	12

Outline Drawing:

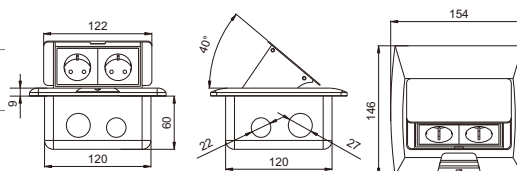


HTD-28/28L



AS Panel Material	Brass alloy/Alu alloy		
Panel Dimension (mm)	154*146		
Cutout (mm)	123*123		
Capacity Of Modules	4 ways 45 type modules		
G.W/CTN(KGS)	MEASUREMENT/CTN(CM)	TOTAL(M ³)	Set/CTN
15	49*32*22	0.0345	12

Outline Drawing:

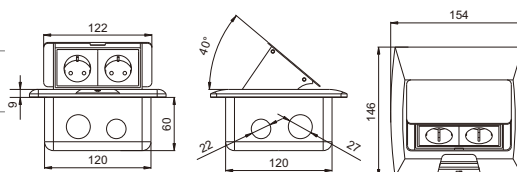


HTD-381L



AS Panel Material	Aluminum alloy		
Panel Dimension (mm)	154*146		
Cutout (mm)	123*123		
Capacity Of Modules	4 ways 45 type modules		
G.W/CTN(KGS)	MEASUREMENT/CTN(CM)	TOTAL(M ³)	Set/CTN
15	49*32*22	0.0345	12

Outline Drawing:

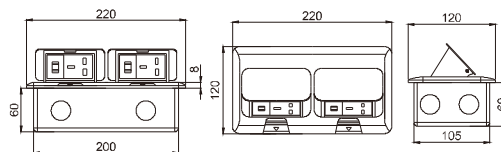


HTD-1602/1602L



AS Panel Material	Brass alloy/Alu alloy		
Panel Dimension (mm)	220*120		
Cutout (mm)	202x107		
Capacity Of Modules	6 ways 45 type modules		
G.W/CTN(KGS)	MEASUREMENT/CTN(CM)	TOTAL(M ³)	Set/CTN
17.6	44*24*27	0.0285	10

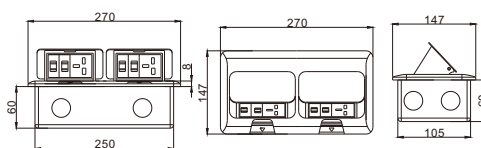
Outline Drawing:



HTD-2602/2602L/W/B

AS Panel Material	Brass alloy/Alu alloy		
Panel Dimension (mm)	270*147		
Cutout (mm)	253*108		
Capacity Of Modules	8 ways 45 type modules		
Color	silver / golden / white / black		
G.W/CTN(KGS)	MEASUREMENT/CTN(CM)	TOTAL(M ³)	Set/CTN
96.5	45*28.5*31.5	0.0404	10

Outline Drawing:

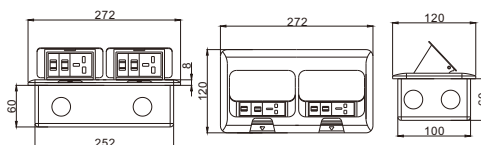


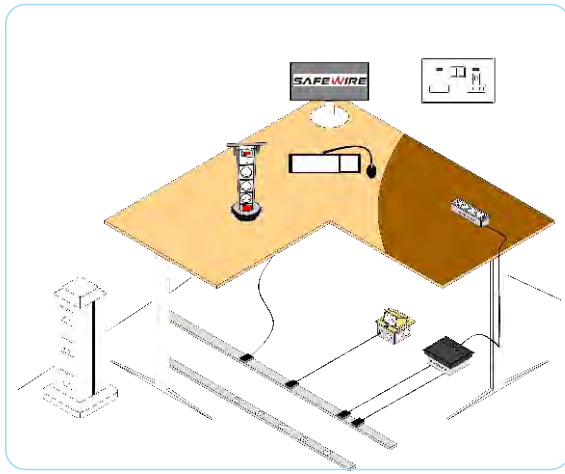
HTD-3602/3602L/W/B



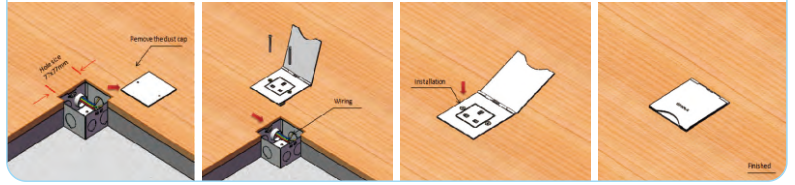
AS Panel Material	Alu alloy		
Panel Dimension (mm)	272*120		
Cutout (mm)	252*100		
Capacity Of Modules	8 ways 45 type modules		
Color	Silver		
G.W/CTN(KGS)	MEASUREMENT/CTN(CM)	TOTAL(M ³)	Set/CTN
96.5	45*28.5*31.5	0.0404	10

Outline Drawing:





Installation



FUS Series Features

1. More capacity : 6*power socket outlet.



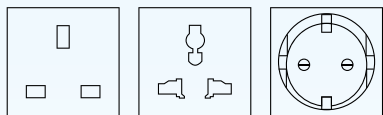
2. Silver/Black/Brass/White/Nickel etc . color



3. More International Socket , multimedia and Data accessories: BS/EU/UL/UniversalISAStandard.

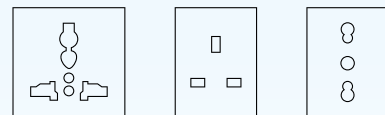
1. 45*45mm Modules

45



2. 128 Type series

128



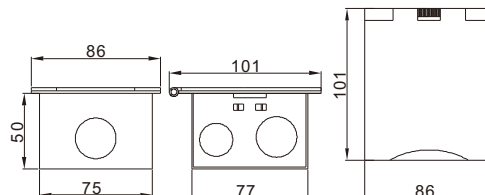
FUS: Flip Up socket

HTD-101/101P



AS Panel Material	Brass alloy/Stainless-Steel		
Panel Dimension (mm)	86*101		
Cutout (mm)	78*80		
Capacity Of Modules	2 ways 45 type modules		
G.W/CTN(KGS)	MEASUREMENT/CTN(CM)	TOTAL(M ³)	Set/CTN
24	55*34*24	0.0449	50

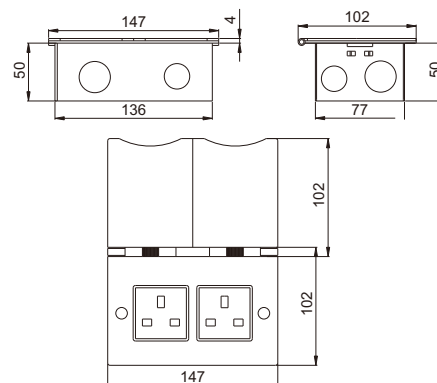
Outline Drawing:



HTD-102/102P

AS Panel Material	Brass alloy/Stainless-Steel		
Panel Dimension (mm)	147*102		
Cutout (mm)	138x80		
Capacity Of Modules	4 ways 45 type modules		
G.W/CTN(KGS)	MEASUREMENT/CTN(CM)	TOTAL(M ³)	Set/CTN
23.2	36*33.5*35	0.0422	25

Outline Drawing:

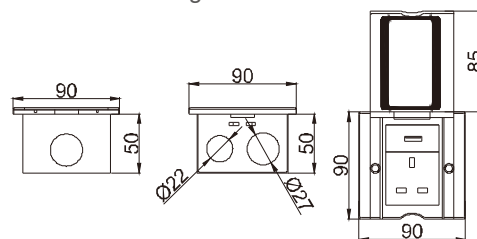


HTD-103C/103W



AS Panel Material	Zinc alloy		
Panel Dimension (mm)	90*90		
Cutout (mm)	77*80		
Capacity Of Modules	3 ways 45 type modules		
G.W/CTN(KGS)	MEASUREMENT/CTN(CM)	TOTAL(M ³)	Set/CTN
14.2	55*34*24	0.0449	50

Outline Drawing:

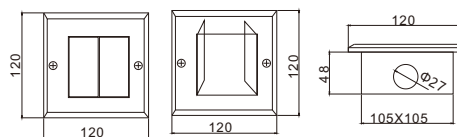


HTD-11/11P



AS Panel Material	Brass alloy/Stainless steel		
Panel Dimension (mm)	120*120		
Cutout (mm)	68*68		
Capacity Of Modules	3 ways 45 type modules		
G.W/CTN(KGS)	MEASUREMENT/CTN(CM)	TOTAL(M ³)	Set/CTN
14.25	32*29*32	0.0297	12

Outline Drawing:

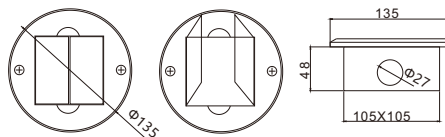


HTD-12



AS Panel Material	Round shape Brass H62/stainless 304		
Panel Dimension (mm)	φ135mm		
Cutout (mm)	105*105		
Capacity Of Modules	3 ways 45 type socket or 1* 128 type socket		
G.W/CTN(KGS)	MEASUREMENT/CTN(CM)	TOTAL(M ³)	Set/CTN
115	41.5*32.5*32.5	0.0438	20

Outline Drawing:

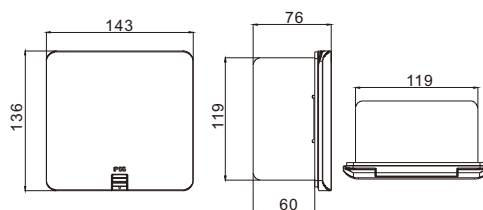


FD-777-A/AP



AS Panel Material	Brass alloy		
Panel Dimension (mm)	143*136		
Cutout (mm)	122*122		
Capacity Of Modules	4 ways 45 modules		
G.W/CTN(KGS)	MEASUREMENT/CTN(CM)	TOTAL(M ³)	Set/CTN
40	52*35*24	0.0437	16

Outline Drawing:

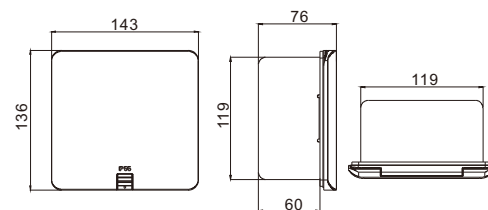


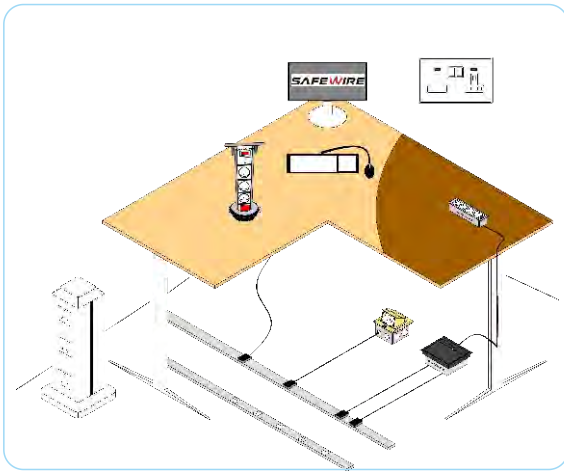
FD-777-B/BP



AS Panel Material	Brass alloy & nickel plated brass		
Panel Dimension (mm)	143*136		
Cutout (mm)	122*122		
Capacity Of Modules	3 ways 128 type modules		
G.W/CTN(KGS)	MEASUREMENT/CTN(CM)	TOTAL(M ³)	Set/CTN
14.25	32*29*32	0.0297	12

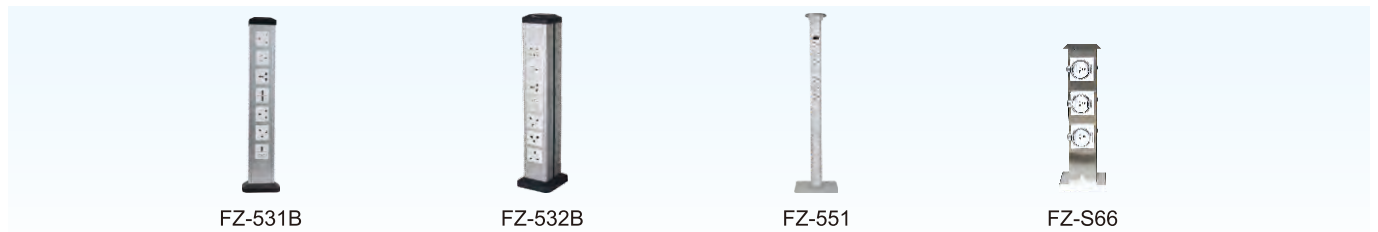
Outline Drawing:





MCS Series Features

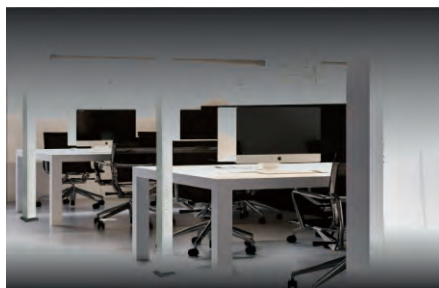
1. Easy plug in/out:



2. More power socket & Data:

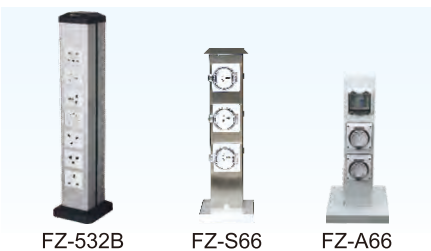


3. ODM Design for height & Input



Advantage

1. IP44&IP66 IP Level:



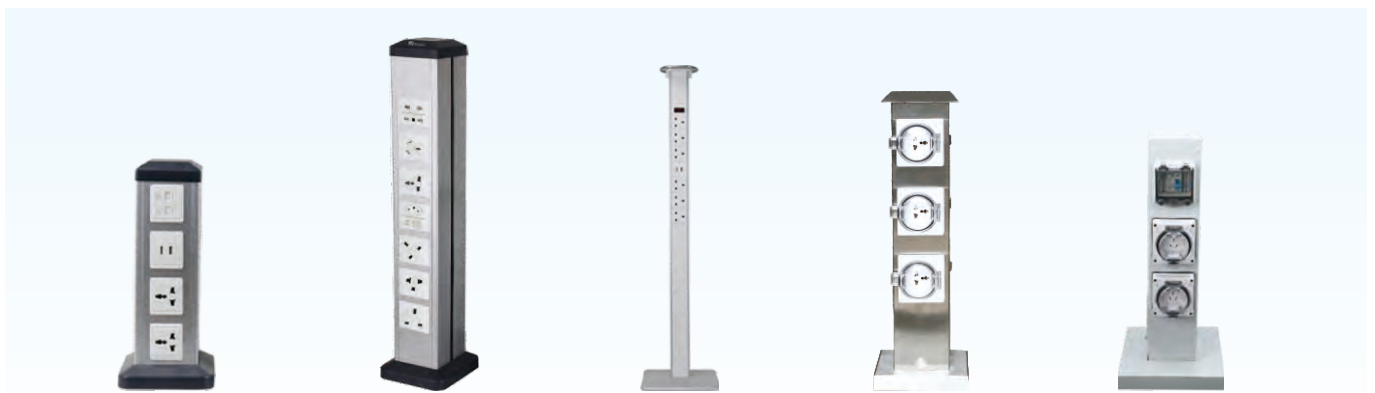
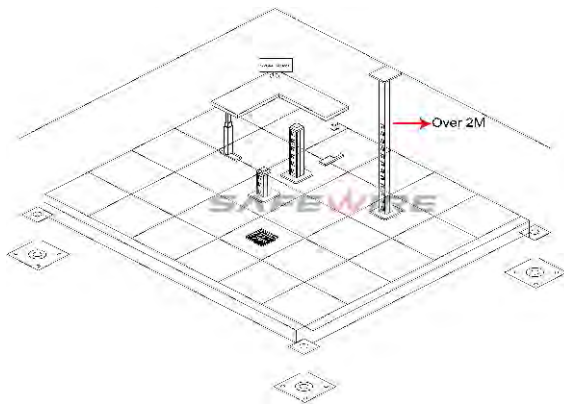
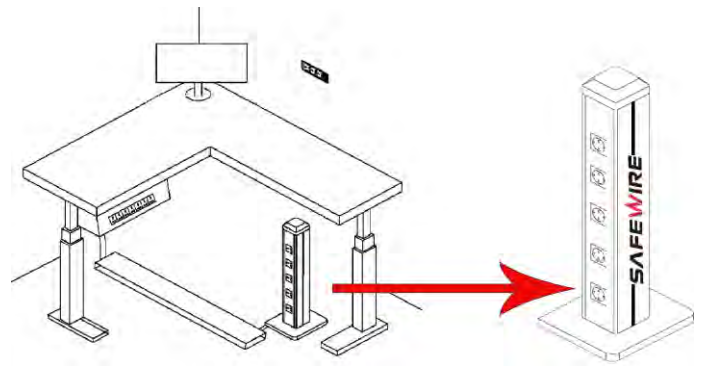
2. Supply with Wire & Input cable



3. Customization design such as base, cover & outlet:



Safewire's Mini-column Application in different system



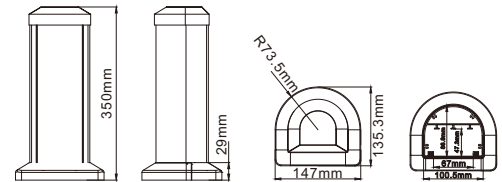
MCS: Mini-Columns Socket & utility column



FZ-531A

Material	Aluminum alloy		
Height Of Product(mm)	350		
Power Supply Side	Single side		
Capacity Of Modules	8 ways 45 modules		
G.W/CTN(KGS)	MEASUREMENT/CTN(CM)	TOTAL(M ³)	Set/CTN
10.3	53.5*37*34.5	0.068	6

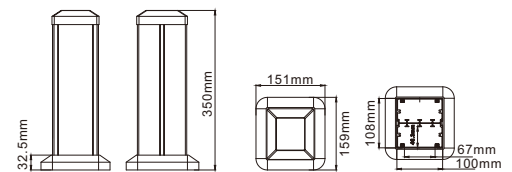
Outline Drawing:



FZ-532A

Material	Aluminum alloy		
Height Of Product(mm)	350		
Power Supply Side	Dual side		
Capacity Of Modules	16 ways 45 modules		
G.W/CTN(KGS)	MEASUREMENT/CTN(CM)	TOTAL(M ³)	Set/CTN
17.5	53.5*37*34.5	0.068	6

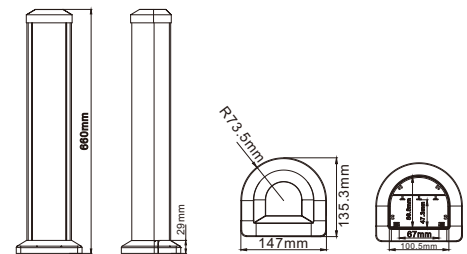
Outline Drawing:



FZ-531B

Material	Aluminum alloy		
Height Of Product(mm)	660		
Power Supply Side	Single		
Capacity Of Modules	14 ways 45 modules		
G.W/CTN(KGS)	MEASUREMENT/CTN(CM)	TOTAL(M ³)	Set/CTN
17.5	52*34.5*68.5	0.123	12

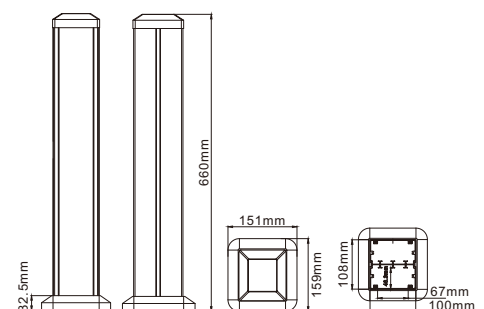
Outline Drawing:



FZ-532B

Material	Aluminum alloy		
Height Of Product(mm)	660		
Power Supply Side	Dual side		
Capacity Of Modules	28 ways 45 modules		
G.W/CTN(KGS)	MEASUREMENT/CTN(CM)	TOTAL(M ³)	Set/CTN
17.5	52*34.5*68.5	0.123	12

Outline Drawing:

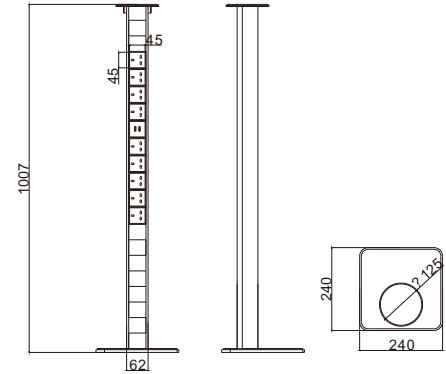




FZ-551

Material	Aluminum alloy		
Height Of Product(mm)	1007		
Bottom Base Size(mm)	240*240		
Capacity Of Modules	20ways 45 modules		
G.W/CTN(KGS)	MEASUREMENT/CTN(CM)	TOTAL(M ³)	Set/CTN
17.5	52*34.5*68.5	0.123	12

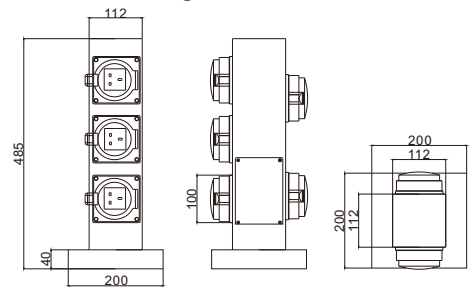
Outline Drawing:



FZ-S66

Material	Stainless steel 304		
Ip Protection Level	IP66		
Power Supply Side	Two side		
Capacity Of Modules	5 IP66 Waterproof case		
G.W/CTN(KGS)	MEASUREMENT/CTN(CM)	TOTAL(M ³)	Set/CTN
60.5	22*24*67	0.035	1

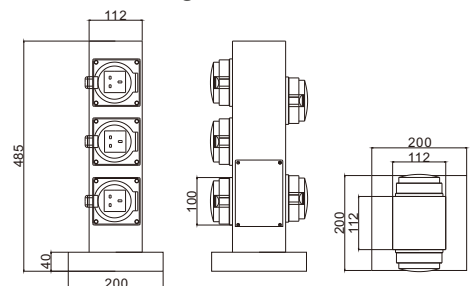
Outline Drawing:



FZ-A66

Material	Stainless steel 304		
Ip Protection Level	IP66		
Power Supply Side	Two side		
Capacity Of Modules	5 IP66 Waterproof case		
G.W/CTN(KGS)	MEASUREMENT/CTN(CM)	TOTAL(M ³)	Set/CTN
60.5	22*24*67	0.035	1

Outline Drawing:



Desktop socket / PDU socket / wireless charger

