



Wenzhou Safewire Electric Co.,Ltd.
2nd floor, Wealth Garden, Liushi Town, Yueqing city,Wenzhou,Zhejiang,China
Tel:0086-577-61725369; Email:info@safewirele.com;

Wenzhou Safewire Electric CO.,Ltd.

SPECIFICATION SHEET

PRODUCT NAME: Pull Outlet Box

PRODUCT No. : HTD-13



ADD: 2nd floor, Wealth Garden, Liushi Town, Yueqing city,Wenzhou,Zhejiang,China
(TEL) :0086-577-62799688
(E-mail) : info@safewirele.com
(WEB): <http://www.safewirele.com>

Quick Details:

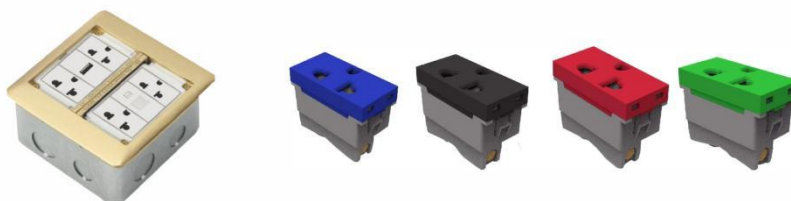
Serial No.	Parameter	Description
1	Safewire item	HTD-13
2	Surface finish	Wire drawing/Polishing/Spray painting
3	Panel Dimension(mm)	134*134
4	Cutout(mm)	122x122
5	Static pressure	1000N
6	Horizontal mounting	Horizontal installation
7	Sink box Material	Steel+Zinc plated
8	Hinged lid thickness	4MM
9	Base box dimension(mm)	122*122*71.5
10	Available modules	45*45/45*22.5(mm) modules
11	Colors	silver/Golden
12	Module Capacity	6
13	Material	Aluminum alloy/Brass alloy

Application:



1.Feature of Safewire floorbox:

1.More capacity : 6*power socket outlet.



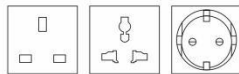
2. Silver/Black/Brass/White/Nickel etc . color



3.More International Socket,Multi media and Data accessories:BS/EU/UL/Universal/SAA Standard

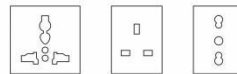
1.45*45mm Modules

45



2.128 Type series

128



2. Advantage of Safewire floorbox :

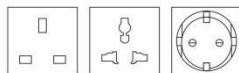
1.over 20 years production experience for global brand :



2.More internation socket , multimedia and Data accessories :

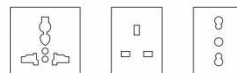
1.45*45mm Modules

45



2.128 Type series

128

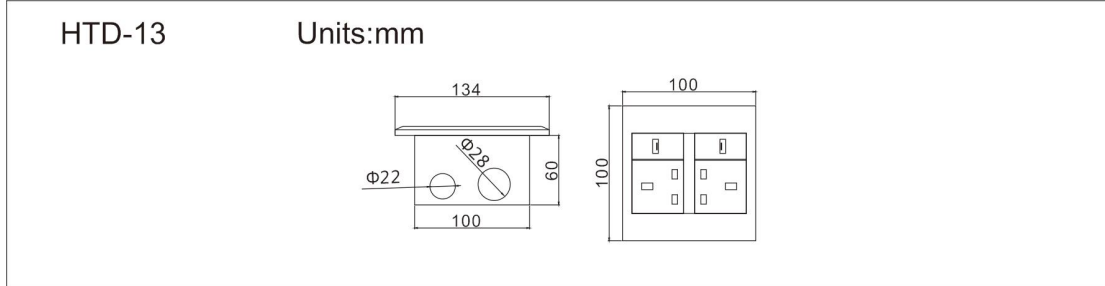


3.Reliable quality certificated by TUV,Germany



3.Specification of Safewire floorbox :

A)Product dimension:



B)Available installation modules/socket/accessories:

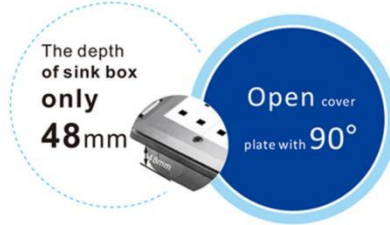
1. 45*45mm Modules



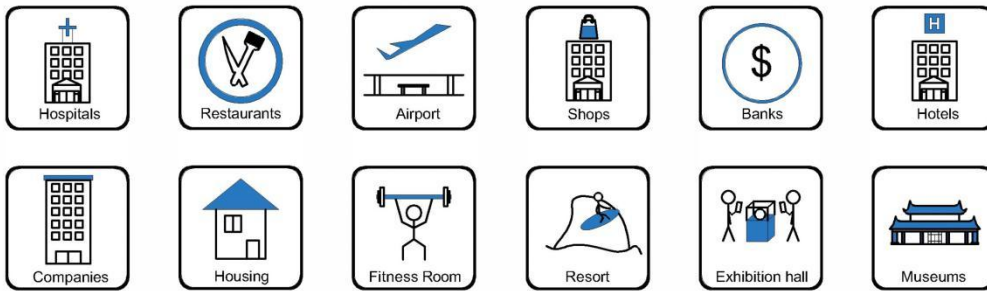
2. 128 Modules socket

	23x72mm	Thailand 6 Pin Power socket	white/black
	23x72mm	NEMAS-15R 16A 6 Pin power socket	white/black
	23x72mm	NEMA5-20R 20A 6 Pin Power socket	white/black
	23*36mm	RJ11 telephone models	white/black

C)The depth of sink box only 48mm



D)Safewire floorbox Application in different floor system:



HTD-13



HTD-12



HTD-11/11P



HTD-101/101P



HTD-102/102P

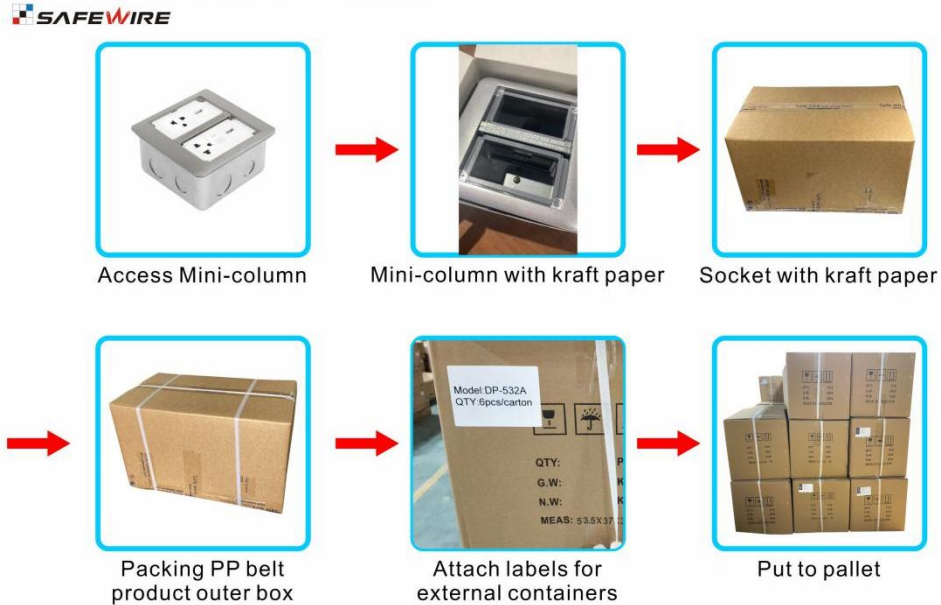


HTD-103C/103W



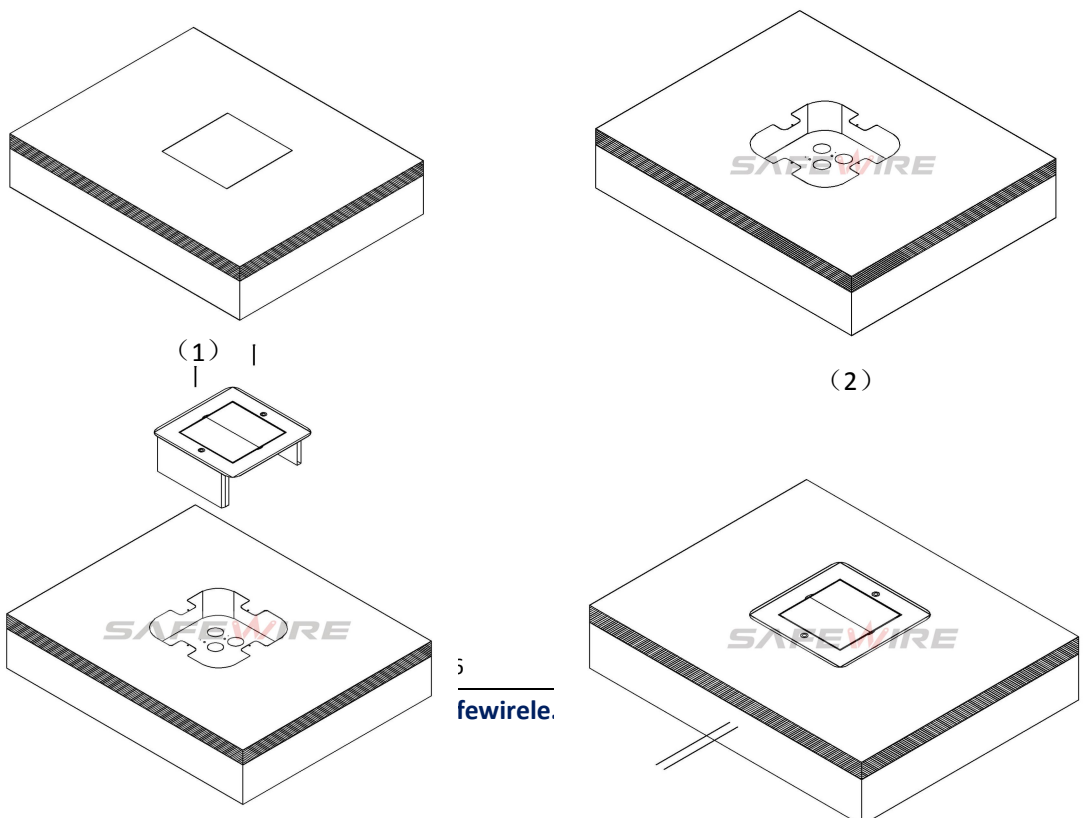
HTD-8/8P

F)Safewire optional of economical package:



Installation instructions:

1. Cut out 122*122(mm), Powering the slurry.
2. Remove the pre-installed temporary lid,wiring and installing modules,Per-installed cable pipe as per your request .
3. Install cover lid and tighten with screws.
4. Conceal the cut edge of carpet of flooring





Wenzhou Safewire Electric Co.,Ltd.

2nd floor, Wealth Garden, Liushi Town, Yueqing city,Wenzhou,Zhejiang,China
Tel:0086-577-61725369; Email:info@safewirele.com;

(3)

(4)

Attentions:

- 1.When installing and wiring,Product should avoid direct contact with corrosive liquid, gas (strong acid, strong alkali, paint).
- 2.This product is suitable for dry surface treatment, avoid water flush and immersion, and ensure its insulation.This product is not suitable for use in wet areas.
- 3.All dimensions quotes are nominal only.Drawing images and specification are only for illustrative purposes and dimensions are subject to final confirmation by us.

Safety Warning:

- 1.This is a class I product and must be earthed
- 2.This product must be installed/wired by a qualified electrician
- 3.For indoor use only.