



Wenzhou Safewire Electric Co.,Ltd.

2nd floor, Wealth Garden, Liushi town, Yueqing, Wenzhou,China ,325604

Wenzhou Safewire Electric CO.,Ltd.

# SPECIFICATION SHEET

**PRODUCT NAME:**            **Cabinet PDU**

**PRODUCT No. :**            **SFGLC-2**



Tel:0086-577-61725369; Mob:0086-18612380398;ZIP:325604

(E-mail): [info@safewirele.com](mailto:info@safewirele.com)

(WEB): <http://www.safewirele.com>

**Tel:0086-577-61725369;**

**Email:[info@safewirele.com](mailto:info@safewirele.com);**

**<http://www.safewirele.com>**



**Technical parameters & characteristic :**

**1) Working environment:**

1. The environment temperature:-5°C~/40°C
2. The rated voltage : 100V~~250V
3. Rated current : 10A、 13A、 16A、 20A

**2) Characteristic:**

<b>1</b>	<b>Model</b>	<b>FZ-502</b>	<b>6</b>	<b>HS Code</b>	8536690000
<b>2</b>	<b>Brand Name</b>	Safewire or OEM brand	<b>7</b>	<b>Market standard</b>	<b>Customized</b>
<b>3</b>	<b>Type</b>	Cabinet flush-mounting	<b>8</b>	<b>Place of origin</b>	Zhejiang , Wenzhou, China
<b>4</b>	<b>Color</b>	Silver/black/white	<b>9</b>	<b>Frequency</b>	50Hz~60Hz
<b>5</b>	<b>Grounding</b>	Standard grounding	<b>10</b>	<b>Current Type</b>	AC

**3) Technical parameters :**

Serial No.	Parameter	Description
<b>1</b>	<b>Panel Material</b>	Aluminum alloy
<b>2</b>	<b>Outlet</b>	2 * Power socket
<b>3</b>	<b>Capacity of modules /Interface size</b>	4 ways (45*45mm)modules
<b>4</b>	<b>Configuration</b>	2 Power socket/USB charger
<b>5</b>	<b>Available modules</b>	45mm modules



**SAFEWIRE**

Wenzhou Safewire Electric Co.,Ltd.

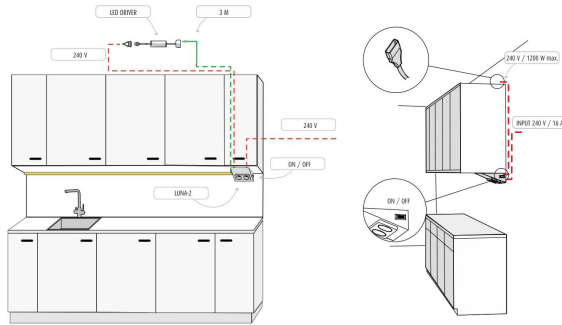
2nd floor, Wealth Garden, Liushi town, Yueqing, Wenzhou,China ,325604

## Application:

*Wall Flush-mounting on cabinet of kitchen, power supply for home-appliance and lighting on/off switch.*



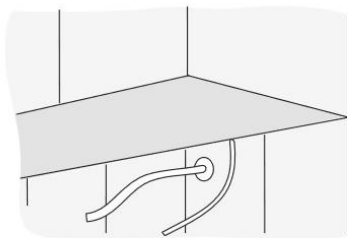
Lead-Corner + Luna-2



[www.safewirele.com](http://www.safewirele.com)

[happyhe@safewirele.com](mailto:happyhe@safewirele.com)

+008618612380398

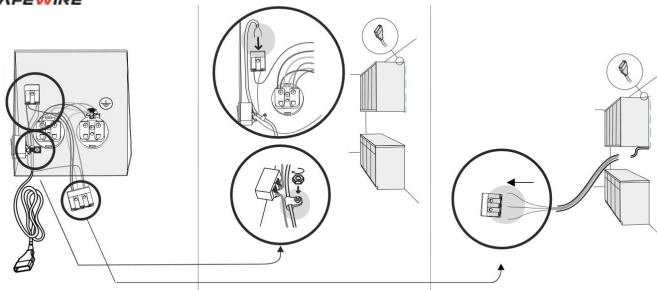


**INPUT**  
240 V  
Max 16 A

**OUTPUT, 240 V**  
Max 5A

[happyhe@safewirele.com](mailto:happyhe@safewirele.com) +008618612380398

-----[www.safewirele.com](http://www.safewirele.com)-----



[www.safewirele.com](http://www.safewirele.com)

[happyhe@safewirele.com](mailto:happyhe@safewirele.com)

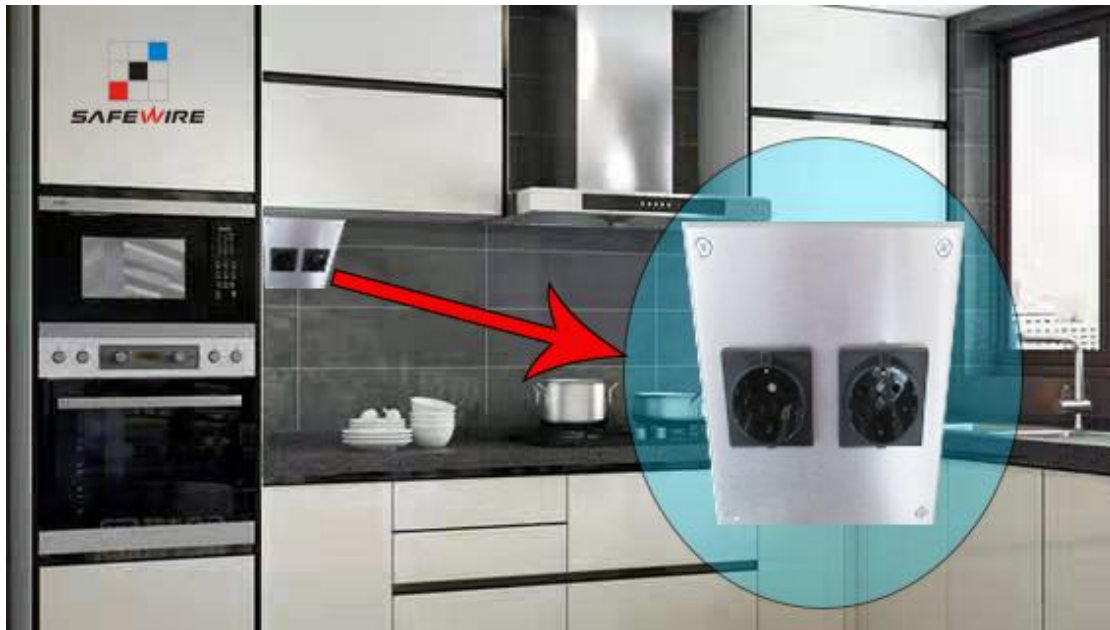
+008618612380398

Tel:0086-577-61725369;

Email:[info@safewirele.com](mailto:info@safewirele.com);

<http://www.safewirele.com>

**Product Show:**



**Front Review**



**Side Review**



**Back Review**

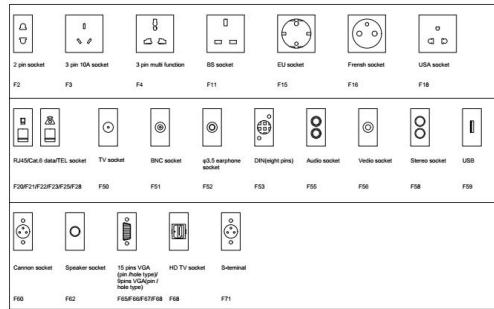


**Features:**

Safewire's Wall Flush-mounting aluminum profile SFGLC-2 is application with electric on cabinet of kitchen, power supply for home-appliance and lighting on/off switch . Two power outlet socket or 1 power socket with 1 USB charger modules.

- 1).Aluminum profile material surface finished .
- 2).Flush-mounting on cabinet and power supply for home-appliance and lighting control.
- 3).Length and configuration is customization.
- 4). Available for Safewire's 45\*45mm international socket and network modules.

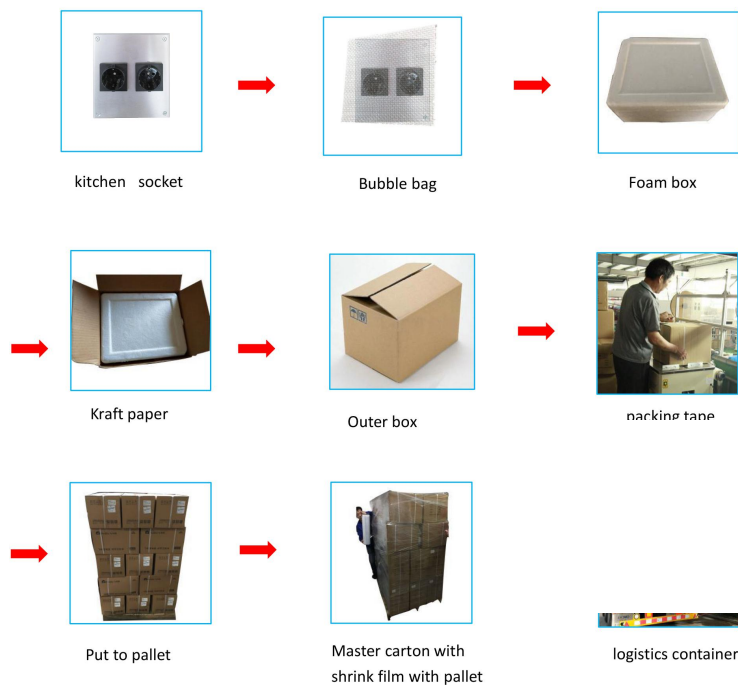
available for 45\*45mm type international sockets or modules types:



**Package:18** Pcs inner box into a master carton.Poly bag with box packing.

## SafeWire

### Package solution



[www.safewirele.com](http://www.safewirele.com)

### Installation Process

1. screw and fix the bottom box.
2. Fixing socket modules.Assemble the socket or data Jack into the plastic frame and press frame ensure them combine tightly.
3. Keep socket modules connected by inner wire (it should be copper core 1.5mm<sup>2</sup>9~20 wire and length should be suitable).Then earthing and ensure inner wire tightly with modules.



Wenzhou Safewire Electric Co.,Ltd.

2nd floor, Wealth Garden, Liushi town, Yueqing, Wenzhou,China ,325604

---

**Attentions:**

- 1.Prevent from corrosive liquid, gas (strong acid, strong alkali, paint)and humidity.
2. All dimension quoted are nominal only. Drawings , images and text are for illustrative perposes only and product details and dimension are subject to change without notice.

**Safety Warning:**

- 1)This is a class I product and must be earthed
- 2)This product must be installed/wired by a qualified electrician
- 3)before installation/maintnance ,ensure the mains supply is switched off and the circuit fuses are removed or circuit breakers switch off
- 4)For indoor use only

**RoHS Certificate of Compliance:** Conforms with the Directive 2002/95/EC (ROHS)