



Wenzhou Safewire Electric Co.,Ltd.
2nd floor, Wealth Garden, Liushi town, Yueqing, Wenzhou,China ,325604

Wenzhou Safewire Electric CO.,Ltd.

SPECIFICATION SHEET

PRODUCT NAME:

Floor Box

PRODUCT No. :

SCF-A01



Address:2nd floor, Wealth Garden, Liushi town, Yueqing, Wenzhou,China ,325604

Tel:0086-577-61725369

Mob:0086-18612380398

ZIP:325604

(E-mail) : happyhe@safewirele.com

(WEB): <http://www.safewirele.com>

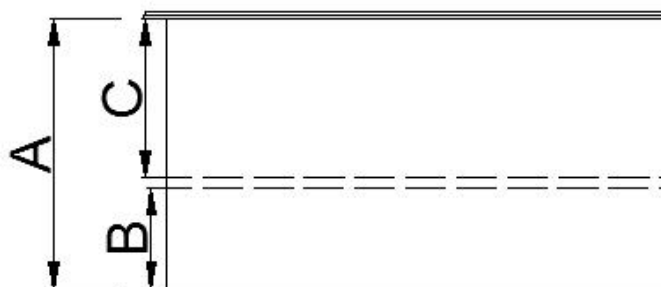
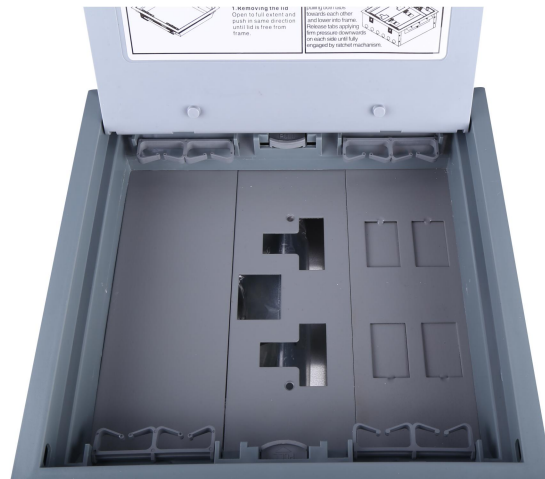
Email:happyhe@safewirele.com; **http:**[//www.safewirele.com](http://www.safewirele.com)

Product Size:






| No. | Parameter | Description |
|-----|---------------------|-----------------------|
| 1 | Floor Cut Out | 264x264mm |
| 2 | Floor Box Depth | 80mm |
| 3 | Plug Top Clearance | 30mm |
| 4 | Overall Frame & Lid | 270x270mm |
| 5 | Frame Lid Recess | 8--10mm |
| 6 | Application | Screed/concrete floor |

Product Show:

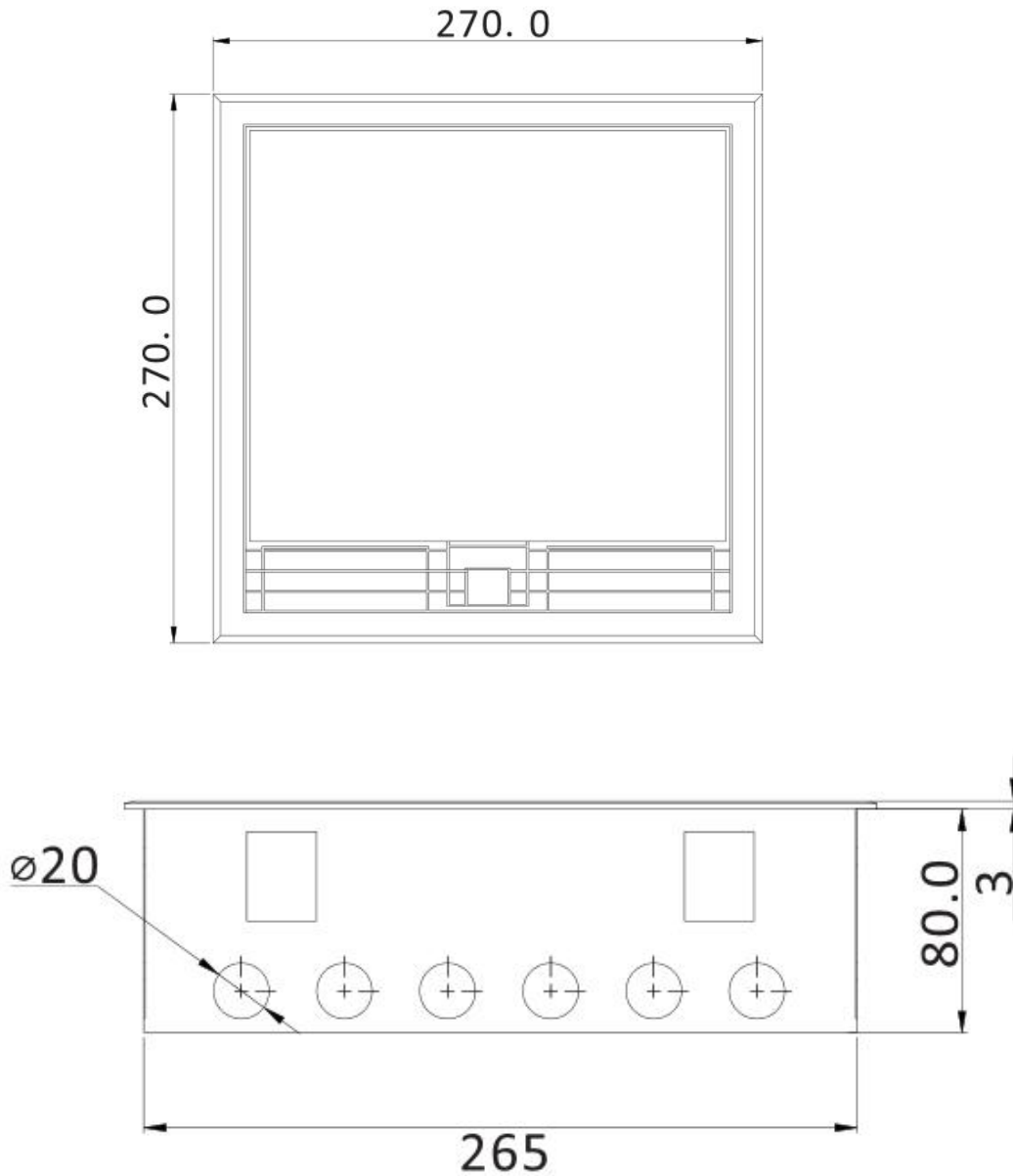


| A (mm) | B Bottom to mounting plate (mm) | C Mounting plate to top of accessory(plug clearance) (mm) |
|-----------|--|--|
| 80 | 30 | 47 |

Accessory Plates:

| 4 compartment | Bridges picture | Description | Dimension |
|---------------|---|--|------------|
| SAP01 |  | Duplex switch socket of BS 13A | 250 X 77mm |
| SAP02 |  | 4 ways Internet data such as telephone and computer | 250 X 77mm |
| SAP03 |  | Accessory plate for compartment plate without cutout | 250 X 77mm |

Outline drawing:



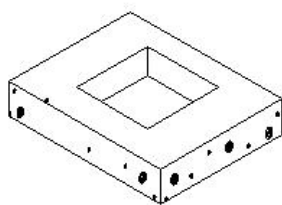
Package:6pcs inner box into a master carton.Poly bag with box packing.

Email:happyhe@safewirele.com; **http:**www.safewirele.com

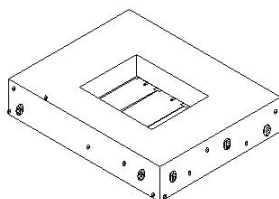


Installation instructions:

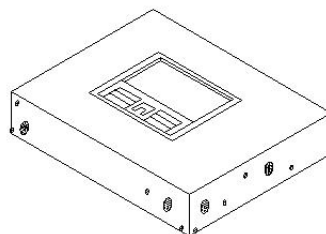
Insert plate



(1)



(2)



(3)

Configuration:

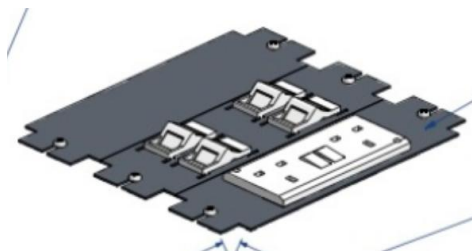
A) Empty body



B) 2 2gang BS switch socket+4 data(90 degree or 45 degree)



or



C) 2 2gang BS switch socket+4 data+45type video audio socket



D) 45 type modules



E) 86 type socket



Wenzhou Safewire Electric Co.,Ltd.
2nd floor, Wealth Garden, Liushi town, Yueqing, Wenzhou,China ,325604

