

Safewire, Safe Wiring

Since 1998; 20+ years OEM factory for global brand

🔍 www.safewirele.com

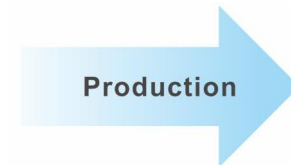
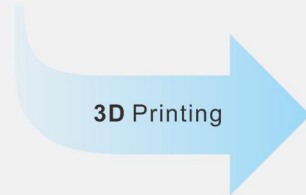
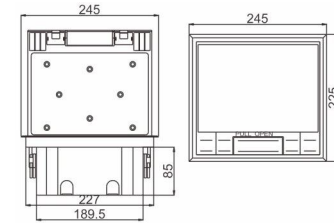
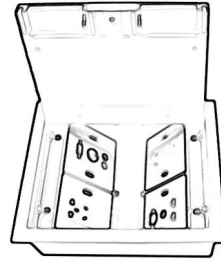
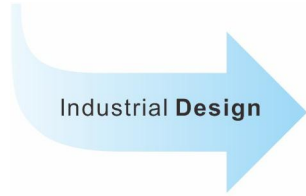
Safewire, Safe wiring





WENZHOU SAFEWIRE ELECTRIC CO.,LTD.

Since then, we embarked on the relentless pursuit of being the biggest supplier with over 5000 K sets each year and OEM production for almost world-wide brand in China as we choose only the best and safest electrical products with their consumers in mind.



Metal parts process

Equipment

We produce high quality electric products and export all over the world.

Our floor socket, floor boxes, underfloor junction box and other wiring system products are entirely produced in house with strict quality control.

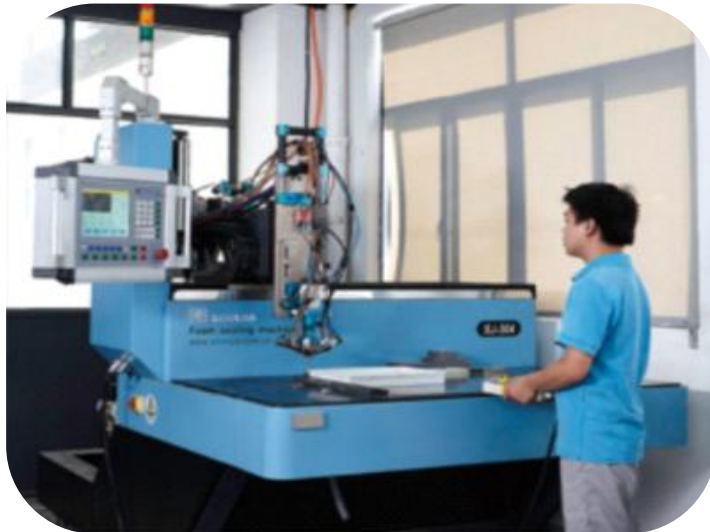


Our production facilities include:

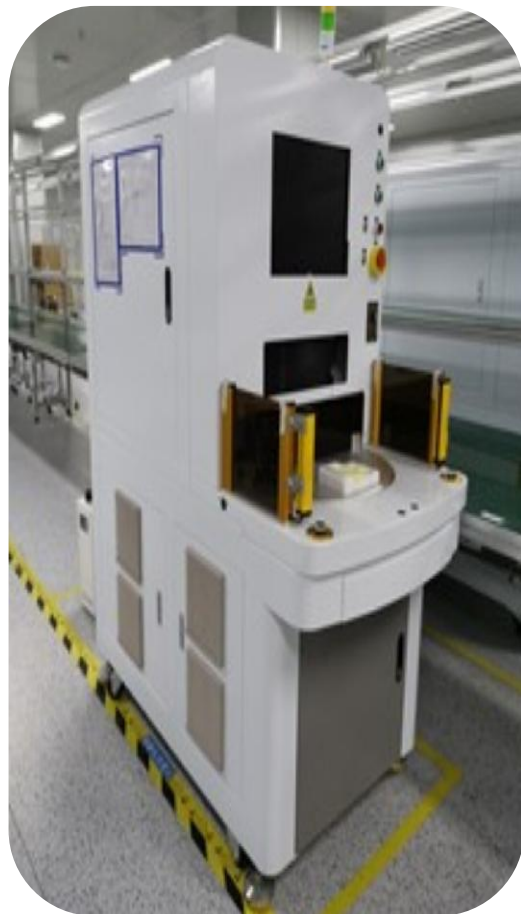
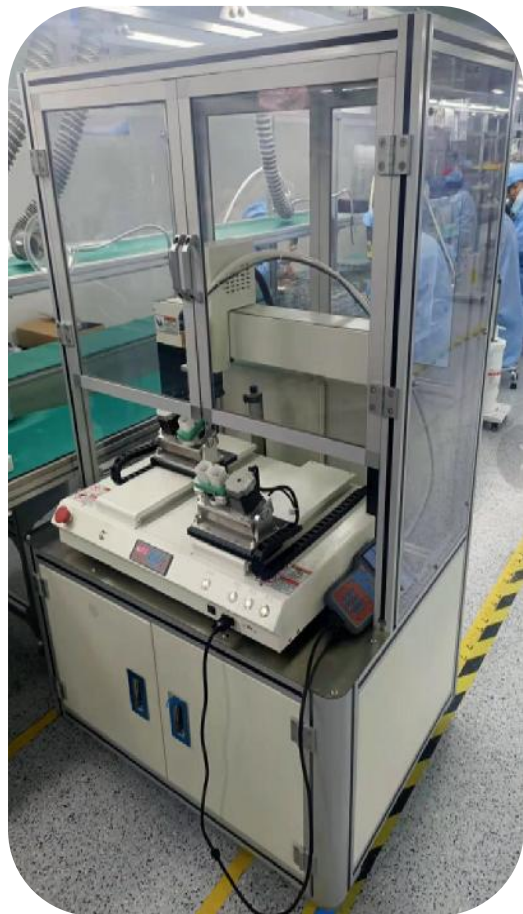
- Factory: 30,000 square meters building areas;
- R&D department: 3D design and engineers with vast experience and knowledge.
- Tools department: We have brand new CNC center with erosion machines, trilling machines and saw machines.
- Press department: Equipped with several new press machines for up to 100 t and 10 lathe machines metal cutting and bending machines. etc.
- Galvanization department: Newly refurbished automatic galvanizing line. We can make Ag, Zn, Ni and Tn plating on our metal and copper parts.
- Own independent electrical laboratory--Full routine testing for our own products, 300 sqm of advanced technology lab.



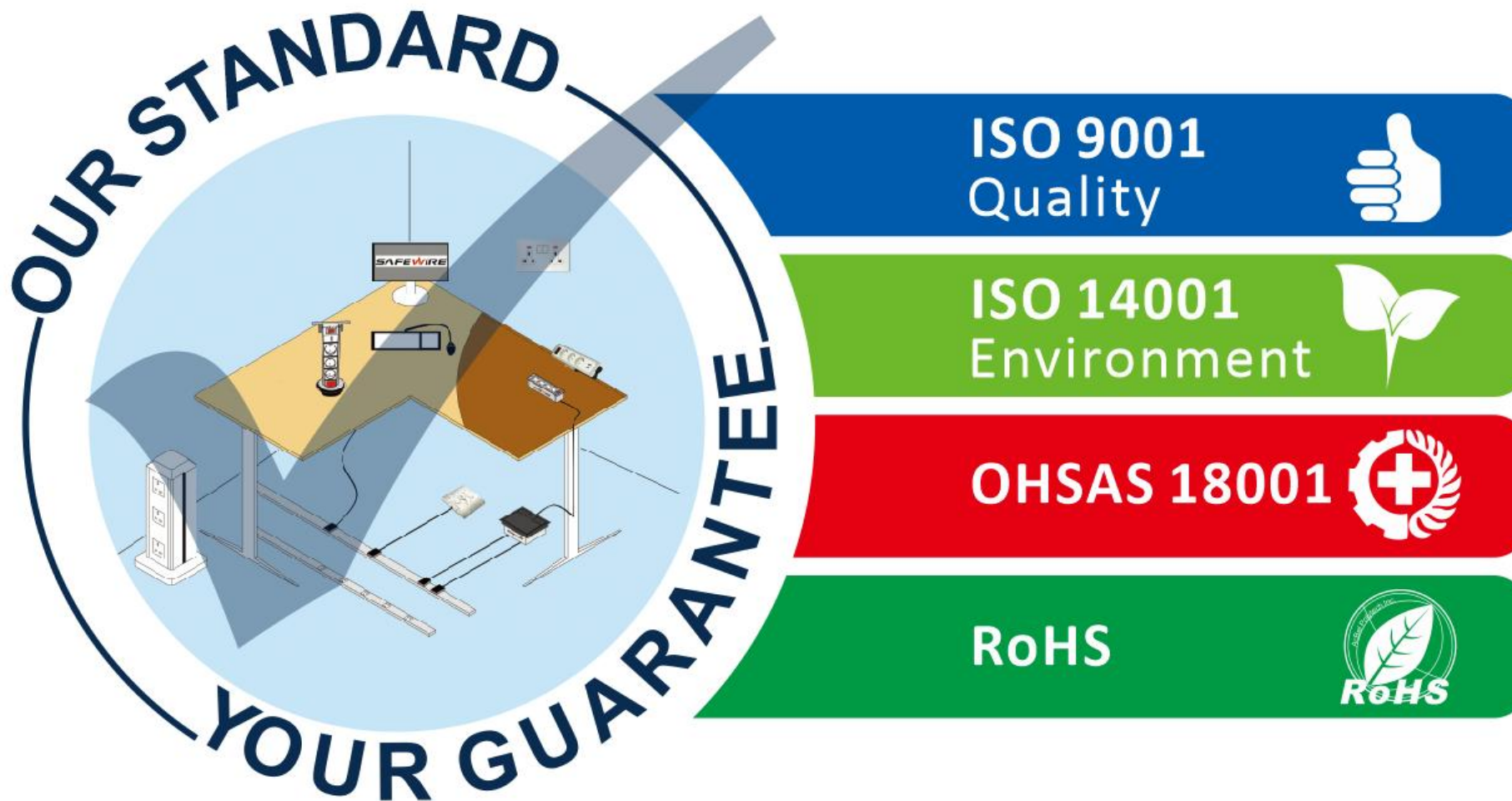
Electrical parts process



part 2 Electronic parts process



Quality System



Test equipment & Facilities



CE certificate, report and ROHS certificate



Verification of Conformity

Certificate No.: 21ZCTC0720002RC

Applicant : Wenzhou Sifuweier Electrician Co., Ltd.
Address : 2nd floor, Wealth Garden, Liushitown, Yueqing, Wenzhou, China
Manufacturer : Wenzhou Sifuweier Electrician Co., Ltd.
Address : 2nd floor, Wealth Garden, Liushitown, Yueqing, Wenzhou, China
Product : French sockets
Brand Name : Safewire
Model No. : F16C

Requirement	Applied Standards	Document Evidence	Result
RoHS Directive	2011/65/EU 2015/863	Test Report 21ZCTC0720002RR	Conform
RoHS Standards	IEC 62321:2013		

RoHS

Remark: The Certificate of compliance is based on a test procedure or an evaluation of the above-mentioned product. This is to certify that the above-mentioned product is in compliance with the RoHS Directive (2011/65/EU) and its subsequent amendments EU No. (2015/863) of the European parliament on the Restriction of the use of certain Hazardous Substances (Lead (Pb); Mercury (Hg); cadmium (Cd); Hexavalent chromium (Cr); polybrominated biphenyls (PBBs) and polybrominated diphenyl ethers (PBDEs); Hexabromocyclododecane (HBCDD); Bis-(2-ethylhexyl) Phthalate (DEHP); Benzylbutyl Phthalate (BBP); Dibutyl Phthalate (DBP)) in Electrical and Electronic equipment. This certificate can be checked for validity at www.renzhengjiance.com



Shenzhen ZCT Technology Co., Ltd.

3/F, Building 5, Hongsheng Industrial Zone, Bao'an Road, Xixiang Street, Bao'an District, Shenzhen, Guangdong, China.
 ☎ : 400-669-6965 ☎ : 86-755-23702323, ✉ : admin@renzhengjiance.com, 🌐 : http://www.renzhengjiance.com.



CERTIFICATE OF CONFORMITY

No.: 21ZCTS0720001SPC

Applicant : Wenzhou Sifuweier Electrician Co., Ltd.
Address : 2nd floor, Wealth Garden, Liushitown, Yueqing, Wenzhou, China
Manufacturer : Wenzhou Sifuweier Electrician Co., Ltd.
Address : 2nd floor, Wealth Garden, Liushitown, Yueqing, Wenzhou, China
Product : French sockets
Trademark : Safewire
Model : F16C

The submitted sample of the above equipment has been tested and found to comply with the following European Directive:

Low Voltage Directive - 2014/35/EU

The standard(s) used for showing compliance with the essential requirements:

Applicable Standard(s)	Test Report(s) Number
IEC/EN 60884-1:2002+AMD1:2006+AMD2:2013	21ZCTS0720001SP

This certificate is part of the full test report(s) and should be read in conjunction with it. This certificate is based on an evaluation of one sample of above mentioned product. It does not imply assessment of the production of the product. Without the written approval of Shenzhen ZCT Technology Co., Ltd. this certificate is not permitted to be reproduced, except in full. It is not permitted to use the test lab's logo. The CE marking may only be used if all the relevant and effective European Directives are applicable.



Shenzhen ZCT Technology Co., Ltd.

3/F, Building 5, Hongsheng Industrial Zone, Bao'an Road, Xixiang Street, Bao'an District, Shenzhen, Guangdong, China.
 ☎ : 400-669-6965 ☎ : 86-755-23702323, ✉ : admin@renzhengjiance.com, 🌐 : http://www.renzhengjiance.com.



CERTIFICATE OF CONFORMITY

No.: 21ZCTE0720003EC

Applicant : Wenzhou Sifuweier Electrician Co., Ltd.
Address : 2nd floor, Wealth Garden, Liushitown, Yueqing, Wenzhou, China
Manufacturer : Wenzhou Sifuweier Electrician Co., Ltd.
Address : 2nd floor, Wealth Garden, Liushitown, Yueqing, Wenzhou, China
Product : French sockets
Trade Mark : Safewire
Model No. : F16C

The submitted sample of the above equipment has been tested and found to comply with the following European Directive:

EMC Directive - 2014/30/EU

The standard(s) used for showing compliance with the essential requirements:

Applicable Standard(s)	Test Report(s) Number
EN 55032:2015 EN 55035:2017 EN IEC 61000-3-2:2019 EN 61000-3-3:2013/A1:2019	21ZCTE0720003ER

This certificate is part of the full test report(s) and should be read in conjunction with it. This certificate is based on an evaluation of one sample of above mentioned product. It does not imply assessment of the production of the product. Without the written approval of Shenzhen ZCT Technology Co., Ltd. this certificate is not permitted to be reproduced, except in full. It is not permitted to use the test lab's logo. The CE marking may only be used if all the relevant and effective European Directives are applicable.



Shenzhen ZCT Technology Co., Ltd.

3/F, Building 5, Hongsheng Industrial Zone, Bao'an Road, Xixiang Street, Bao'an District, Shenzhen, Guangdong, China.
 ☎ : 400-669-6965 ☎ : 86-755-23702323, ✉ : admin@renzhengjiance.com, 🌐 : http://www.renzhengjiance.com.

IP55 test certificate and report



Test Report

- reach live parts or windings not designed to operate when wet;
- accumulate near the cable end or enter the cable if any.

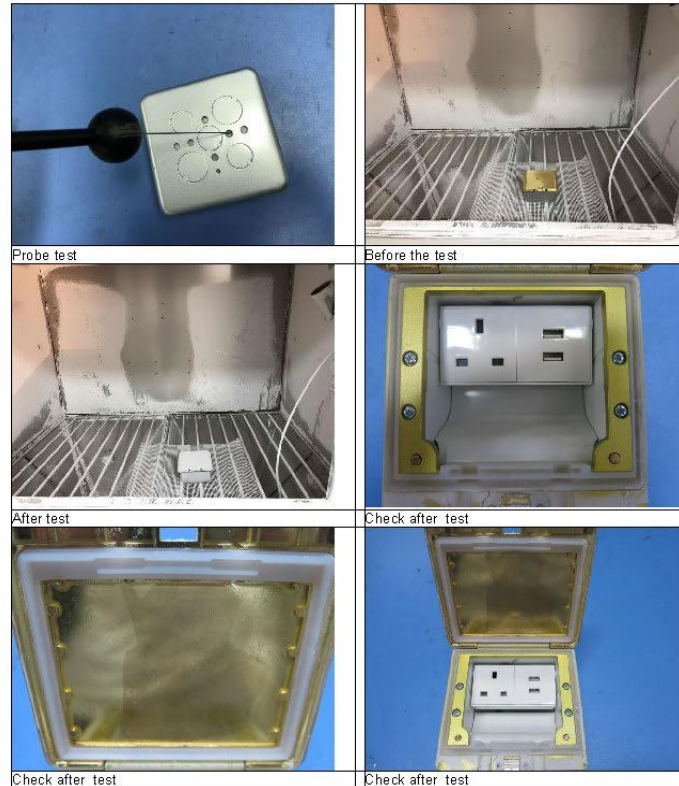
1.7 Test Results:

Sample No.	Test items	Test Results	Verdict
ED190401987L01	IP5X	There is no talcum powder in the sample.	Pass
ED190401987L01	IPX5	There was no water entered into the internal of the sample.	Pass

1.8 Test Photos: IP5X

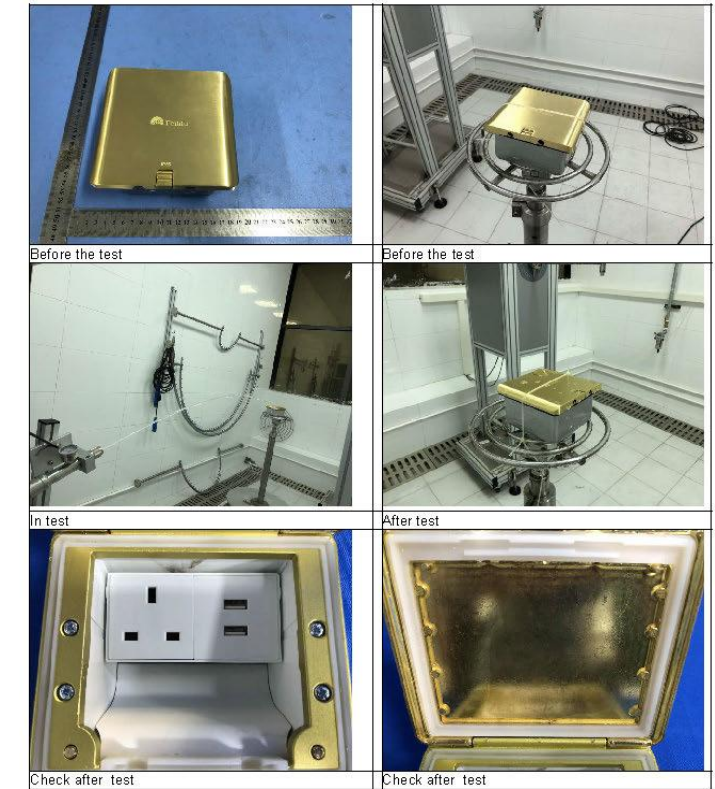


Test Report



Test Report

1.9 Test Photos: IPX5



=====End of report=====

part 8

Our team



Delivery to global

GUARANTEE OF AFTER-SALE SERVICE

Safewire Electric Co., Ltd assure that our products are strictly in accordance with the ISO management system ,now we guarantee our products after-sale service as this following :

- 1 Our company guarantees that the products will be strictly inspected before shipped from factory and the QA rate of products will 100%.
- 2 Our company guarantees that within 1 year from date of receipt and finish installation if some problems occure, our company is responsible for replace free of charge. If beyond warranty period, we will provide you with corresponding paid services within a reasonable range.
- 3 Our electrical accessories is guaranteed to give satisfactory performance for life provided the following conditions exist.
 - a. The accessory has been properly installed by a competent person.
 - b. The accessory has been installed in accordance with the wiring regulations and amendments in force at the time of installation, and that it has not been tampered with or subjected to improper or abnormal use.
4. This following statituiton will be paid service:..
 - * exceeding the warranty period;
 - * failure to provide purchase evidence/documents;
 - * damage caused by failure to use or repair the product as required in the product manual (pay special attention to water inspur into, damage by drop or other not right way by people);
 - * if the customer repairs or disassemblesby himself or by other person who not authorized by our company;
 - * damage caused by wiring with bad quality level communication cables;
 - * failure or damage of products caused by major force such as flood, fire, lightning, eather-quake etc.

When problems occur during the use of the product, our technical engineer will actively respond. Any problem of product quality ,our company will guarantee a clear reply or solution within reasonable time.

Remark: Safewire Electric Co., Ltd reserves the right to modify, at any moment, in the consumer's best interests, the features and components of its products without prior notice.

Safewire Electric Co., Ltd

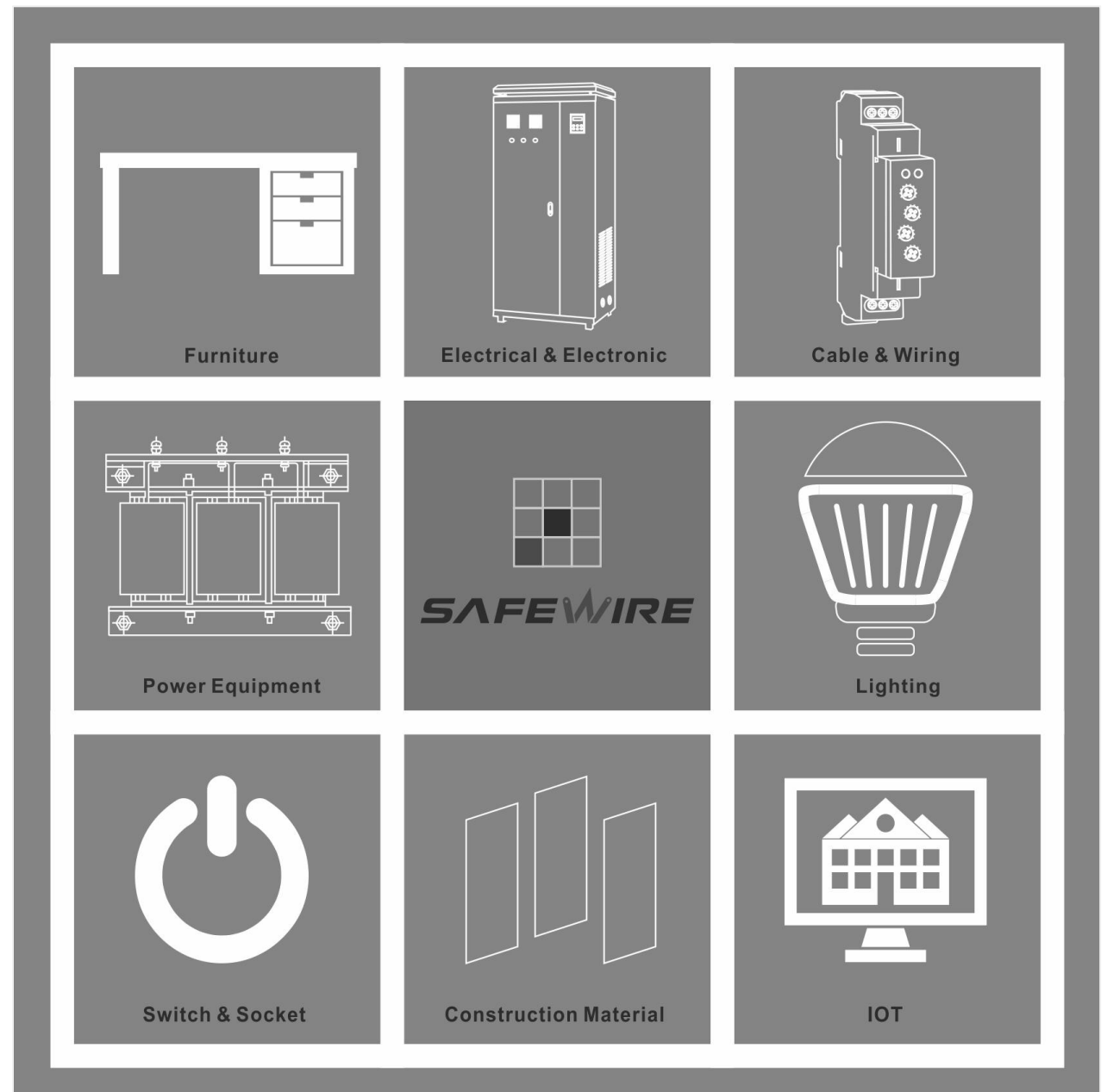


1	法国 France		14	印度 India		27	新加坡 Singapore	
2	德国 Germany		15	斯里兰卡 Sri Lanka		28	印度尼西亚 Indonesia	
3	西班牙 Spain		16	巴基斯坦 Pakistan		29	越南 Vietnam	
4	波兰 Poland		17	阿联酋 United Arab Emirates		30	南非 South Africa	
5	俄罗斯 Russia		18	卡塔尔 Qatar		31	尼日利亚 Nigeria	
6	澳大利亚 Australian		19	伊拉克 Iraq		32	摩洛哥 Morocco	
7	韩国 Korea		20	伊朗 Iran		33	莫桑比克 Mozambique	
8	加拿大 Canada		21	以色列 Israel		34	喀麦隆 Cameroon	
9	巴拉圭 Paraguay		22	哈萨克斯坦 Kazakhstan		35	柬埔寨 Camdobia	
10	阿根廷 Argentina		23	乌兹别克斯坦 Uzbekistan		36	约旦 Jordan	
11	厄瓜多尔 Ecuador		24	香港 Hong Kong		37	塞浦路斯 Cyprus	
12	秘鲁 Peru		25	马来西亚 Malaysia		38	沙特 Saudi Arabia	
13	智利 Chile		26	泰国 Thailand			

Application Industry

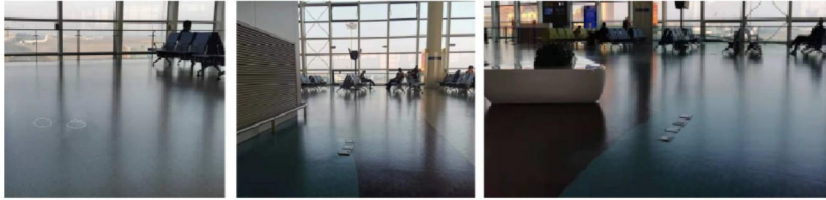
1. Switch & socket Electric
2. Lighting
3. Building Material & Steel tray
4. Optic cable and Telecom accessories
5. Low voltage equipment
6. Video, Audio and Electronic accessories
7. PVC and trunking system
8. Office Furniture
9. Security and Automation
10. Power distribution equipment

More



Application of our products & solution

1. Dubai Airport



2. Paraguay Flooring in bank



3. National University of Singapore



4. Bank in Africa office furniture



5. Malaysia Kuala Lumpur TRX Shopping Plaza & Roof Garden



6. Kazakhstan factory flooring



Cable management Electrical



HTD-626B



SCF-A01



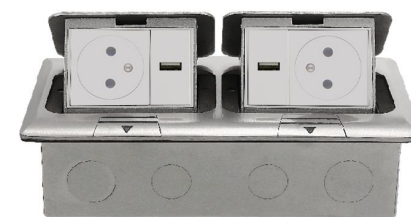
HTD-210C



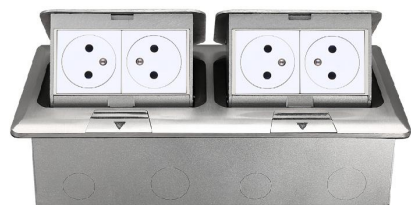
HTD-250K/KP-C



HTD-18L



HTD-1602L



HTD-2602L



FD-221



HTD-13



FZ-A66



FZ-532



FT-09W



FZ-VL-002



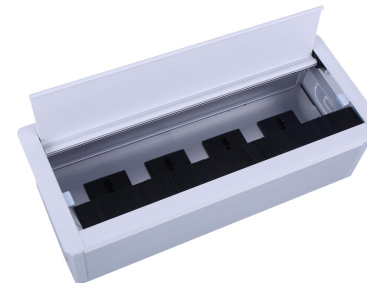
FZ-517



FZ-515



FZ-521WF



FZ-Z300



FZ-ZSU3

Distribution Box & CEE Box & Waterproof Box



SF-NP1807-D



SF-1805C



SF-NP335317



SF1531



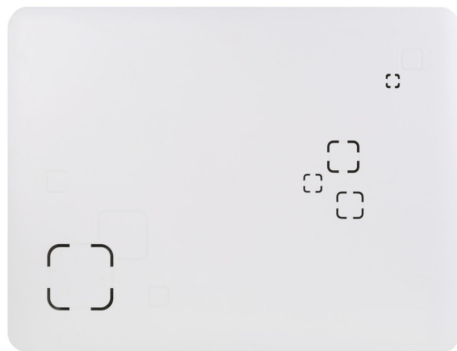
SF1372



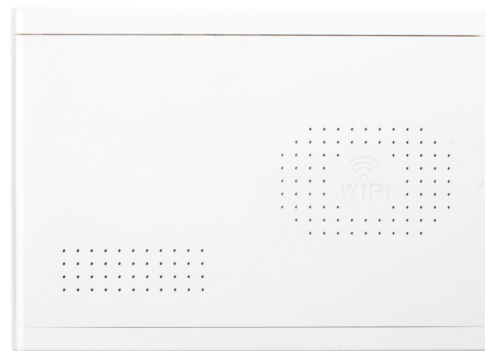
SF1521



SF1501



LYX-09D



LYX-08A



923SPF



901AF



SA66-S

Socket and Electric Accessories



H-USB-08-KSB



R-NE-08B-KSB



CD-7-1A



CD-14-1A



RCD0130SPW



RCD0230SMG



RCD0230SPWA



F16C



F1



F22-2



F22-3



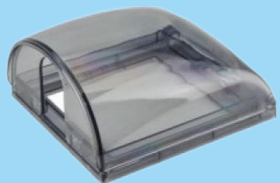
DDSU2108-L



CJL6-32



CJM7-125



SF-HM14-5



SF-HM17



C020CN-03



C100CN-10



SM-F21-1



THANK YOU

Safewire, Safe Wiring.

🔍 www.safewirele.com

