



Wenzhou Safewire Electric Co.,Ltd.

No.152 Xingguang Road, Xingguang industry zone, Liushi town, Yueqing, Wenzhou,China ,325604

Wenzhou Safewire Electric CO.,Ltd.

SPECIFICATION SHEET

PRODUCT NAME: Open coverplate

PRODUCT No. : HTD-302AL



HTD-302AL

ADD: 152 xinguang industrial zone, yueqing city, zhejiang province

(TEL) :0086-577-62799688

(E-mail) : info@safewirele.com

(WEB): <http://www.safewirele.com>

Tel:0086-577-62799688;

Email:info@safewirele.com;

<http://www.safewirele.com>



Wenzhou Safewire Electric Co.,Ltd.

No.152 Xingguang Road, Xingguang industry zone, Liushi town, Yueqing, Wenzhou,China ,325604

Technical parameters & characteristic :

1) Working environment:

1. The environment temperature:-5°C~/40°C
2. The rated voltage : 100V~~250V
3. Rated current : 10A、 13A、 16A、 20A

2) Characteristic:

1	Model	HTD-302AL	6	HS Code	8536690000
2	Brand Name	Safewire or OEM brand	7	Market standard	Customized
3	Type	floor socket	8	Place of origin	Zhejiang , Wenzhou, China
4	Color	silver	9	Frequency	50Hz~60Hz
5	Grounding	Standard grounding	10	Current Type	AC

3) Technical parameters :

Serial No.	Parameter	Description
1	Panel Material	Aluminum Alloy
2	Surface finish	Wire drawing/Polishing/Spray painting
3	Panel Dimension(mm)	210*140
4	Cutout(mm)	193x123
5	Capacity of modules	6 ways modules
6	Mounting type	Declining angle installation
7	Sink box Material	Steel+Zinc plated
8	Base box dimension(mm)	190*120*75
9	Available modules	45*45/22.5*45(mm)



SAFEWIRE

Wenzhou Safewire Electric Co.,Ltd.

No.152 Xingguang Road, Xingguang industry zone, Liushi town, Yueqing, Wenzhou,China ,325604

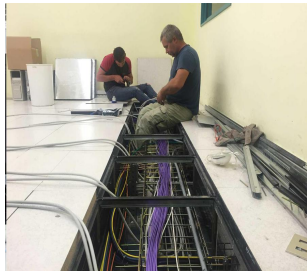
Application:

Application:



The raised floor feature

1. Easy to repair the line, easy to replace the aging line.



2. Strong permeability, easy to use air conditioning and ventilation



3. Easy to install, disassemble, reduce the cost of rewiring



The raised floor to socket requirements:



SAFEWIRE

Wenzhou Safewire Electric Co.,Ltd.

No.152 Xingguang Road, Xingguang industry zone, Liushi town, Yueqing, Wenzhou,China ,325604

1. Environmental protection.
2. Fire prevention/Corrosion resistant/high strength.
3. Good interchangeability with raised floors. Easy to installation.
4. The laying height of the floor is 35mm ~150mm

Product Show:

HTD-302AL

DK cable exit
Code:DK



HTD-302AL Alu alloy



Cover middle with 8 mm
concavity ,
Concave side can be filled
with flooring.



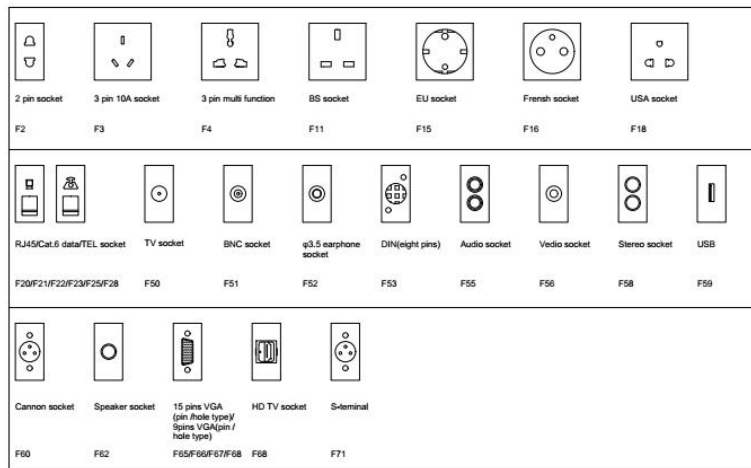
Features:

1. Flush mounting or under floor with floor system.
2. Applicable for concrete floor/raised floor.
3. Protection of 4*hidden cable exit.
4. More plug top clearance:side-mounting installation of socket or data outlet.

Available for F type 45*45mm type or D type22.5*45mm international sockets or modules types:

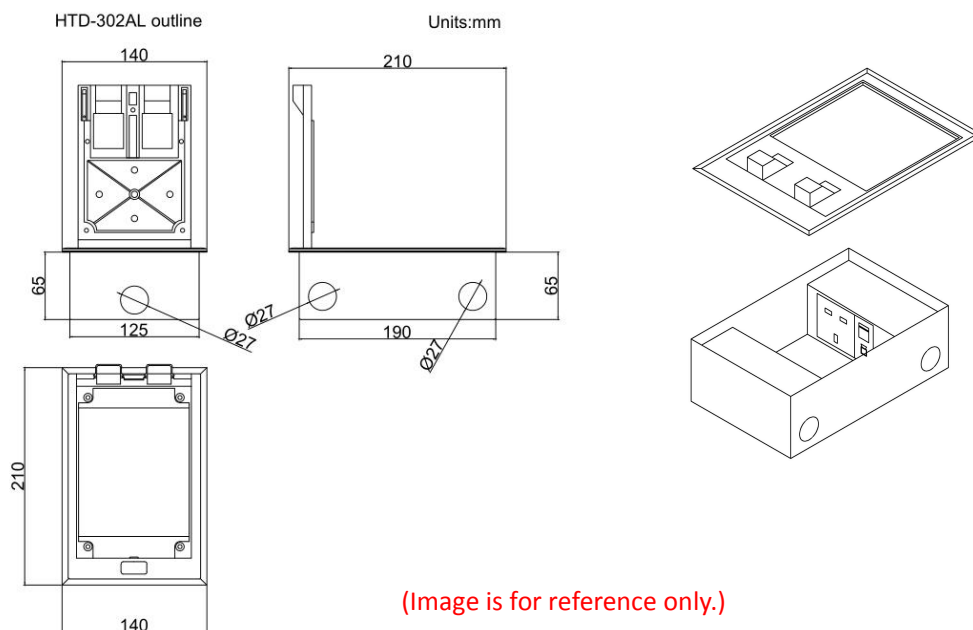
SAFEWIRE

45 Type Function Accessories



HTD-302AL Outline drawing:

SAFEWIRE



(Image is for reference only.)

InstallPackage:8 Pcs inner box into a master carton.Poly bag with box packing.

SafeWire

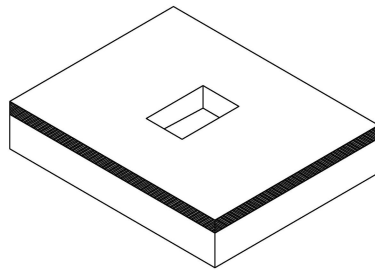
Package solution



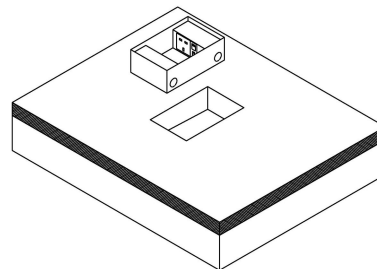
www.safewirele.com

Installation instructions:

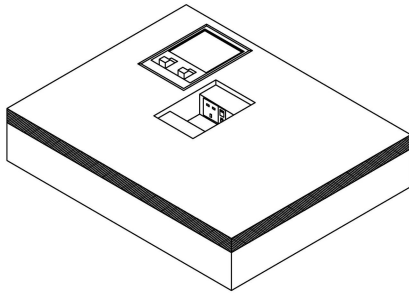
1. Cut out 193*123(mm), Powering the slurry.
2. Remove the pre-installed temporary lid,wiring and installing modules.
3. Per-installthe cable pipe as per your request .
4. Install cover lid and tighten with screws.
5. Conceal the cut edge of carpet of flooring



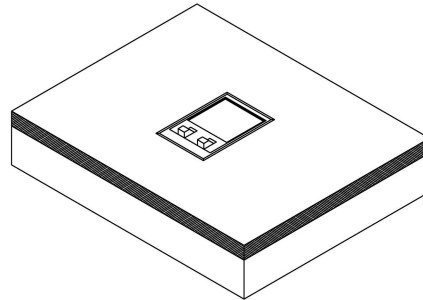
(1)



(2)



(3)



(4)

Attentions:

- 1.When installing and wiring,Product should avoid direct contact with corrosive liquid, gas (strong acid, strong alkali, paint).
- 2.This product is suitable for dry surface treatment, avoid water flush and immersion, and ensure its insulation.This product is not suitable for use in wet areas.
- 3.All dimensions quotes are nominal only.Drawing images and specification are only for illustrative purposes and dimensions are subject to final confirmation by us.

Safety Warning:

- 1.This is a class I product and must be earthed
- 2.This product must be installed/wired by a qualified electrician
- 3.For indoor use only.
- 4.For concrete access floor.