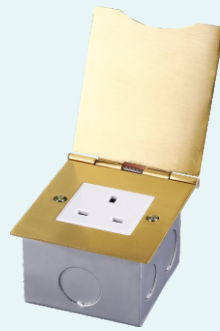
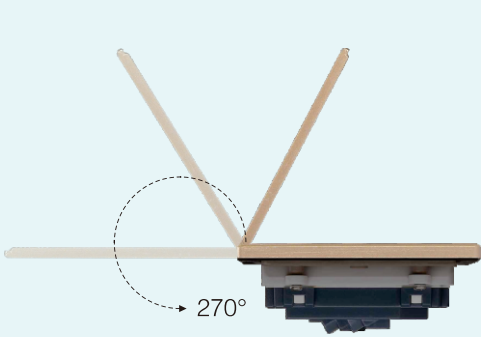


# HTD-101/102/103 Flap Up Socket Series



HTD-101

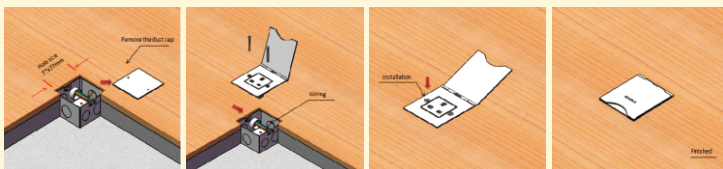


HTD-102

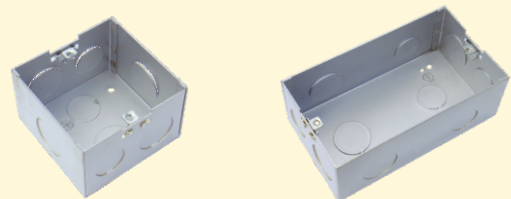


HTD-103

## Installation



## Bottom Box



# More Protection

Polish material protect from oil and water



**Say No**



Oil

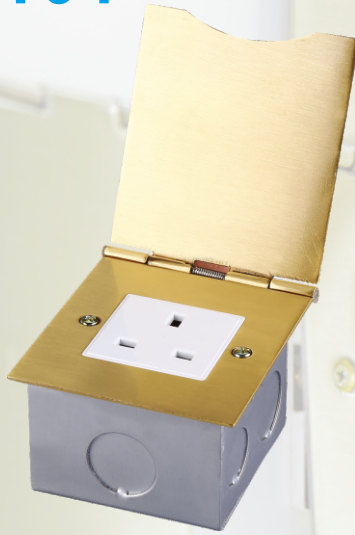


Water





# HTD-101



# HTD-101P

Floor Socket

Desktop Socket

Switch

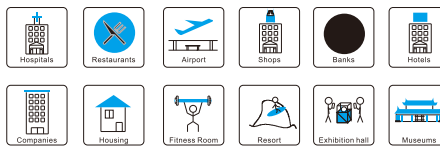
Accessories

## Features:

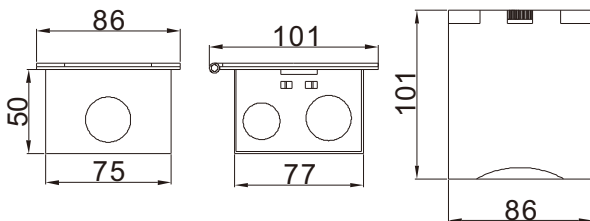
- Nice appearance and safety design for floor management:** Stepped edge brass is available in plain polished (W) or antique bronze (ABZ) or simple polished rope edge(K) or standard soft edge in brushed (BR) or polished (PS) stainless steel. All with a choice of white or black interiors.
- Safety design:** Flush mount box of 1 Gang white insert under shaver Sockets.Surface seamless design and dust and impurities be protect into inside.
- Easy to Install:** Simple design as shaver sockets with spring loaded lid and supplied flush mount box with M3.5 X 30mm fixing screws.
- More Strong Scratch Resistance:** Surface finish made from stainless steel or Brass by combination of tough material, Aluminum (ADC12).
- Ultra slim panel only with thickness of 4mm;**
- Good socket receptacle materials increase service life:** Using elastic phosphor copper avoids playing spark plug and plug set to bit dead. Ensure high conductivity and more life of pulling and plugging over 15000 times.
- More heavy duty of bottom boxes:** Thickness of bottom boxes is over 1mm.

## Technical Parameters :

Parameter	Description
Panel Material	Brass alloy/Stainless-Steel
Surface finish	Wire drawing/Polishing/Spray painting
Panel Dimension(mm)	86*101
Cutout(mm)	74.3x77
Capacity of modules	2 ways modules
Sink box Material	Steel+Zinc plated
Sink box Thickness	1.0mm
Inner box Size(mm)	10.5x6.5x10.5
Outer box Size(mm)	54x34x23
Available modules	45*45/45*22.5(mm)
N.W(kg)	0.44 (Brass alloy);0.43(Alu alloy)
G.W(kg)	23 (Brass alloy);22.4(Alu alloy)
Carton size(cm)	54x34x23

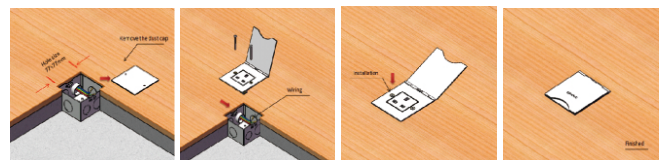


## Outline Drawing: Unit:mm



## Installation Guide

- Cut out: insert sink box or floor box into flooring material
- Dispose receptacle:Gently press the outlet and lift the lid to reveal the module inside.(Another way is to open the lid directly to expose the functional module).
- Wiring: Insert the 10--12mm lead head into the terminal block.
- Fix:Fix the flooring with spare screws on bottom box through embedded hole.



(Image is for reference only.)

Package:50 Pcs inner box into a master carton.Poly bag with box packing.

# HTD-102



# HTD-102P

Floor Socket

Desktop Socket

Switch

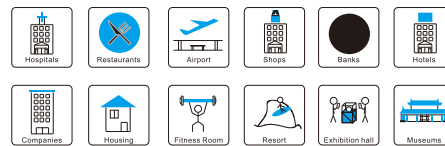
Accessories

## Features:

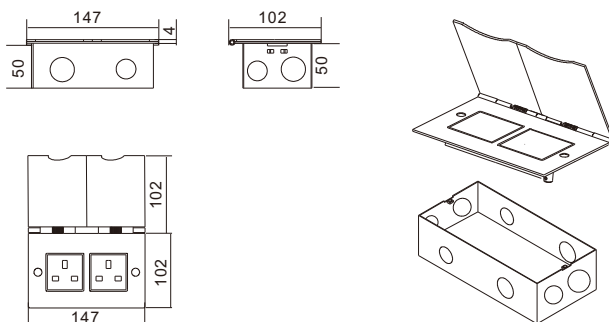
- Nice appearance and safety design for floor management:** Stepped edge brass is available in plain polished (W) or antique bronze (ABZ) or simple polished rope edge(K) or standard soft edge in brushed (BR) or polished (PS) stainless steel. All with a choice of white or black interiors.
- Safety design:** Flush mount box of 1 Gang white insert under shaver Sockets. Surface seamless design and dust and impurities be protect into inside.
- Easy to Install:** Simple design as shaver sockets with spring loaded lid and supplied flush mount box with M3.5 X 30mm fixing screws.
- More Strong Scratch Resistance:** Surface finish made from stainless steel or Brass by combination of tough material, Aluminum (ADC12).
- Ultra slim panel only with thickness of 4mm;**
- Good socket receptacle materials increase service life:** Using elastic phosphor copper avoids playing spark plug and plug set to bit dead. Ensure high conductivity and more life of pulling and plugging over 15000 times.
- More heavy duty of bottom boxes:** Thickness of bottom boxes is over 1mm.

## Technical Parameters :

Parameter	Description
Panel Material	Brass alloy/Stainless-Steel
Surface finish	Wire drawing/Polishing/Spray painting
Panel Dimension(mm)	147*102
Cutout(mm)	134.5x77
Capacity of modules	4 ways modules
Sink box Material	Steel+Zinc plated
Sink box Thickness	1.0mm
Inner box Size(mm)	15.5x11.2x6.6
Outer box Size(mm)	36x33.5x35
Available modules	45*45/45*22.5(mm)
N.W(kg)	0.68 (Brass alloy);0.67(Alu alloy)
G.W(kg)	21.3 (Brass alloy);21.0(Alu alloy)
Carton size(cm)	36x33.5x35



## Outline Drawing: Unit:mm

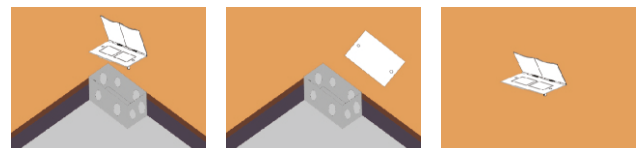


(Image is for reference only.)

Package:30 Pcs inner box into a master carton.Poly bag with box packing.

## Installation Guide

- Cut out: insert sink box or floor box into flooring material
- Dispose receptacle:Gently press the outlet and lift the lid to reveal the function keys inside.(Another way is to open the lid directly to expose the functional module).
- Wiring: Insert the 10--12mm lead head into the terminal block.
- Fix:Fix the flooring with spare screws on bottom box through embedded hole.





# HTD-103

Floor Socket

Desktop Socket

Switch

Accessories



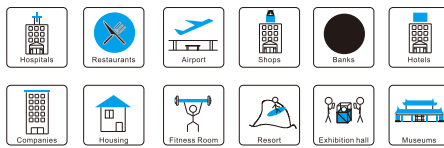
## Features:

1. Adapt for wall installation in Kitchen cabinet or wall of hotel & villa
2. Coverplate open degree over 270 degree rotating;
3. Well-polished nano technology material with protect from oil and water splash entry into insert of socket

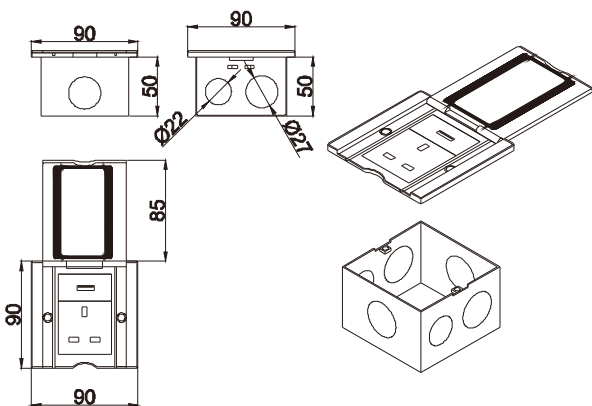


## Technical Parameters :

Parameter	Description
Panel Material	Zinc alloy
Surface finish	Spray paint
Panel Dimension(mm)	90*90
Cutout(mm)	80*77
Capacity of modules	3 ways modules
Sink box Material	Steel+Zinc plated
Sink box Thickness	1.0mm
Inner box Size(mm)	100*100*60
Outer box Size(mm)	237*106*110
Available modules	45*45/45*22.5(mm)
N.W(kg)	0.275
G.W(kg)	0.3
Carton size(cm)	459*338*243



## Outline Drawing: Unit:mm

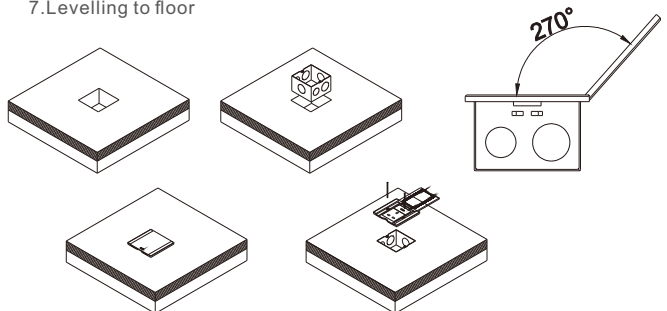


(Image is for reference only.)

Package:50 Pcs inner box into a master carton.Poly bag with box packing.

## Installation Guide

1. Floor box
2. Steel armored conduit
3. Casting screed
4. Heavy current/Data systems.
5. Connecting and earthing
6. Single outlet
7. Levelling to floor





# Junction Box/Power Box/Ground Tank





Floor Socket

Desktop Socket

Switch

Accessories

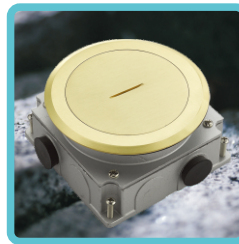


Remove all burrs and sharp edges  
 Be free of excessive flash  
 Be free of scale & rust  
 Radius must be smooth and blend into face



**Lid/Coverplate**

Novel design for panel, the top cover keeps parallel with floor (180°) when opening. Can be used for special plug socket or more plugs at the same time. It can avoid fallback of cover when taking power (information), which improves the security for product during using.



HTD-130



HTD-146



HTD-300



Flat open  
Code:NK



Panel and cover  
keep parallel



More safety



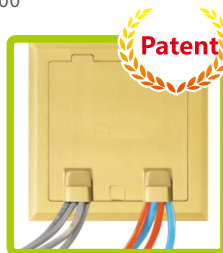
Material: Brass



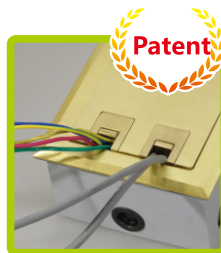
Material:  
Stainless steel

- HTD-120
- HTD-127
- HTD-130
- HTD-140
- HTD-145
- HTD-146
- HTD-160
- HTD-180
- HTD-210
- HTD-210CK
- HTD-250
- HTD-251CK
- HTD-2702
- HTD-300

**Cable Exit Protective Port**



DK cable outlet fixing



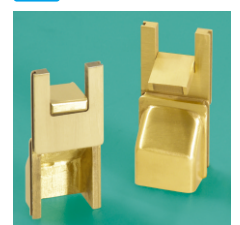
HK cable outlet fixing



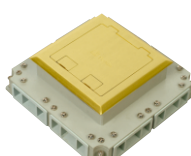
DK Cable Exit  
Code:DK



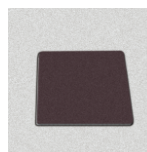
HK Cable Exit  
Code:HK



**Optional As Concrete Sink Box /Junction Box/Cable Tube**



**Installation**



# HTD-120K/(HTD-120KP)

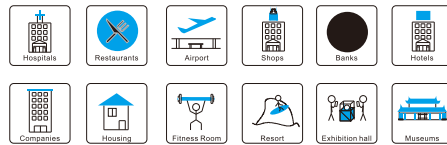


## Features:

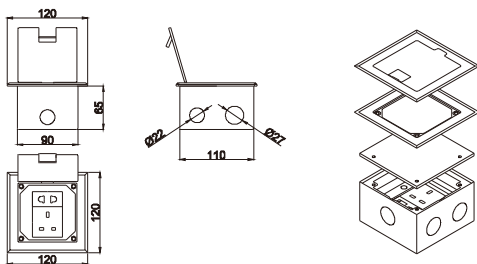
- The lid was opened at 90 degrees:** Open the cover with the ground 90 degrees, furthermore, open and ground into a 180 degree flat is also available. When using, open the cover horizontally to the floor to avoid accident potential and product damage caused by cover erection.
- Simple installation:** Hinged cover with screw fix to steel box body.
- The outlet way of the line can be chosen, DK type cable exit or HK type cable exit:** The outlet port (reverse) can lead multi-strand wire cable out of the floor socket and effectively protect the wire cable skin against damaging. This cord outlet flaps fold down when in use to all cords out with main cover closed.
- More Strong Scratch Resistance:** Surface finish made from stainless steel or Brass by combination of tough material, Aluminum (ADC12) and shot blast finish on the surface achieves high scratch resistance.
- durable socket receptacle:** Using elastic phosphor copper avoids playing spark plug and plug set to bit dead, ensure high conductivity and more life of pulling and plugging over 15000 times.
- Good sealing:** With temporary lid-secure to body during pour to prevent ingress of slurry.
- Power-coated steel box** has 10\*25mm conduit and diameter of 27mm diameter knock-outs available to accommodate CAT 6A cabling available on request.

## Technical Parameters :

Parameter	Description
Panel Material	Brass alloy/Stainless steel
Surface finish	Wire drawing/Polishing/Spray painting
Panel Dimension(mm)	120*120
Cutout(mm)	113x113
Capacity of modules	3 ways modules
Side Mounting type	HTD-120CK for Mounting ST optical fiber or SC optical fiber
Horizontal mounting	Horizontal installation
Sink box Material	Steel+Zinc plated



## Outline Drawing: Unit:mm

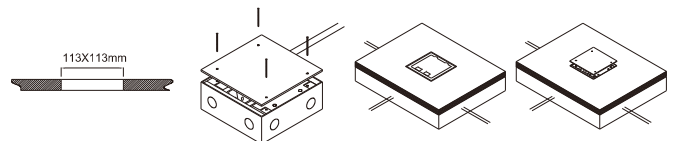


(Image is for reference only.)

Package: 12 Pcs inner box into a master carton. Poly bag with box packing.

## Installation Guide

- Remove the panel from the bottom box along with the electrical modules.
- Fix the flooring with spare screws on the bottom box and place it in the embedded hole.
- The flooring surface shall be at least level with the ground or 20mm below the ground.
- Remove flooring surface, Insert the 10--12mm lead head into the terminal of floor box.
- Fix the panel to the bottom box with screws.





Floor Socket

Desktop Socket

Switch

Accessories

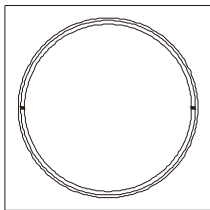
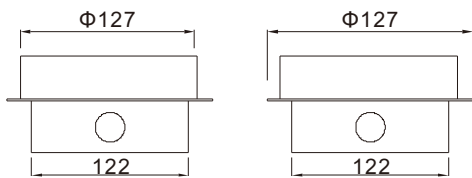
# HTD-127ZAP



## Features:

1. Swivel type floor socket
2. Larger capacity for power and communication outlets recessed in the floor;

## Outline Drawing: Unit:mm

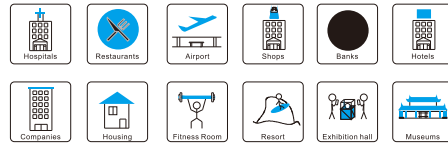


(Image is for reference only.)

Package:8 Pcs inner box into a master carton.  
Poly bag with box packing.

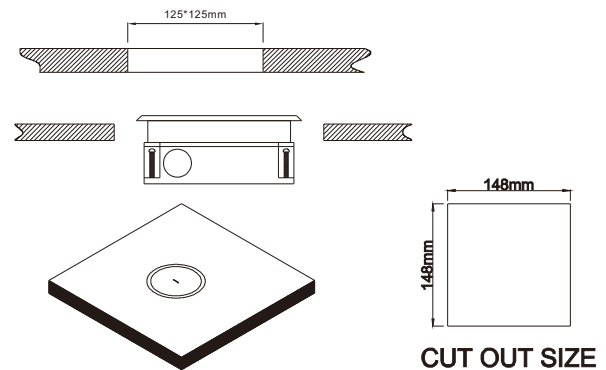
## Technical Parameters :

Parameter	Description
Panel Material	Brass alloy/Stainless steel
Surface finish	Wire drawing / Polishing / Spray painting
Panel Dimension(mm)	φ127
Cutout(mm)	125*125
Capacity of modules	3 ways modules
Horizontal mounting	Horizontal installation
Sink box Material	Steel+Zinc plated
Available module	45*45/22.5*45(mm)



## Installation Guide

1. Remove the panel from the bottom box along with the electrical modules.
2. Fix the flooring with spare screws on the bottom box and place it in the embedded hole.
3. The flooring surface shall be at least level with the ground or 20mm below the ground.
4. Remove flooring surface ,Insert the 10--12mm lead head into the terminal of floor box.
5. Fix the panel to the bottom box with screws.



Floor Socket

Desktop Socket

Switch

Accessories



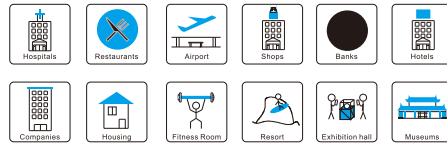
# HTD-130LX/HTD-130LXP

## Features:

1. Access to the underfloor duct system in order to pull wires or make splices.
2. A method to separate duct runs as they cross each other at the intersection.
3. Junction boxes are available configured with up to four openings on all four sides in combinations to provide for a wide variety of duct applications.
4. Heavy duty junction boxes are available for applications when heavy loads will be placed or rolled over the duct systems. These boxes are constructed with thick coverplates and the boxes are provided with adjustable support studs are required for application.
5. Multiple compartment junction boxes have interior partitions which separate the duct runs in the box and provide a continuous path through the box to the exiting duct runs. Corner conduit feeds are also available upon request.
6. Standard boxes are fabricated from galvanized steel with with thickness mild steel plate.
7. Junction boxes have adjustable cover plate assemblies which allow for adjustment upwards permitting accurate leveling to the finished floor.
8. Standard boxes are supplied with adjusting ring to match high preset. Box for use with higher presets require a junction box with a higher adjusting ring to suit the preset height.
9. Junction boxes are available for quarry tile applications. These boxes are supplied with an aluminum ring and pan deep to accept the tile. A series of stainless steel pans and rings are available to accept a wide range of floor finishes.

## Technical Parameters :

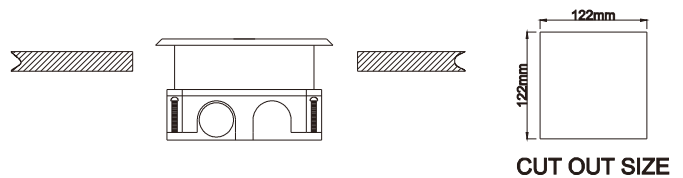
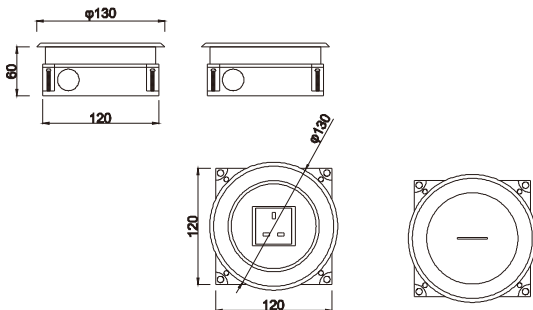
Parameter	Description
Panel Material	Brass alloy/Stainless steel
Surface finish	Wire drawing/Polishing/Spray painting
Panel Dimension(mm)	Φ130
Cutout(mm)	122*122
Capacity of modules	2 ways modules
Horizontal mounting	Horizontal installation
Sink box Material	Steel+Zinc plated
Base box dimension(mm)	120*120*60
Available modules	45*45/22.5*45(mm)



## Installation Guide

1. Remove the panel from the bottom box along with the electrical modules.
2. Fix the flooring with spare screws on the bottom box and place it in the embedded hole.
3. The flooring surface shall be at least level with the ground or 20mm below the ground.
4. Remove flooring surface ,Insert the 10--12mm lead head into the terminal of floor box.
5. Fix the panel to the bottom box with screws.

## Outline Drawing: Unit:mm



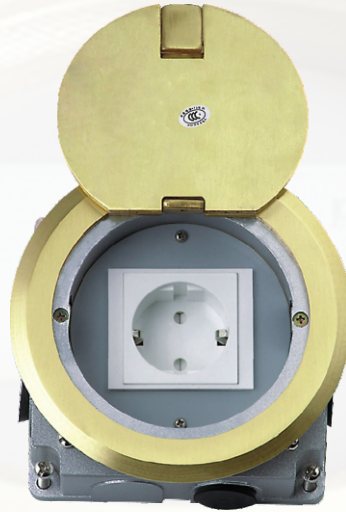
CUT OUT SIZE

(Image is for reference only.)

Package:8 Pcs inner box into a master carton.Poly bag with box packing.



# HTD-140YK/HTD-140YKP



Floor Socket

Desktop Socket

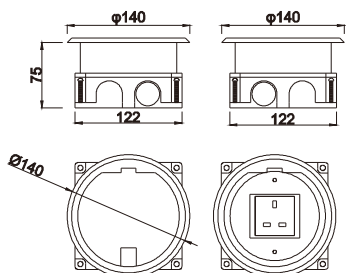
Switch

Accessories

## Features:

1. Access to the underfloor duct system in order to pull wires or make splices.
2. A method to separate duct runs as they cross each other at the intersection.
3. Junction boxes are available configured with up to four openings on all four sides in combinations to provide for a wide variety of duct applications.
4. Heavy duty junction boxes are available for applications when heavy loads will be placed or rolled over the duct systems. These boxes are constructed with thick coverplates and the boxes are provided with adjustable support studs are required for application.
5. Multiple compartment junction boxes have interior partitions which separate the duct runs in the box and provide a continuous path through the box to the exiting duct runs. Corner conduit feeds are also available upon request.
6. Standard boxes are fabricated from galvanized steel with with thickness mild steel plate.
7. Junction boxes have adjustable cover plate assemblies which allow for adjustment upwards permitting accurate leveling to the finished floor.
8. Standard boxes are supplied with adjusting ring to match high preset. Box for use with higher presets require a junction box with a higher adjusting ring to suit the preset height.
9. Junction boxes are available for quarry tile applications. These boxes are supplied with an aluminum ring and pan deep to accept the tile. A series of stainless steel pans and rings are available to accept a wide range of floor finishes.

## Outline Drawing: Unit:mm

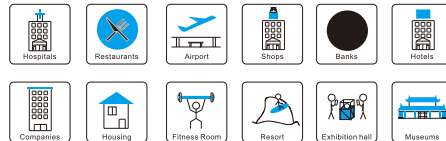


(Image is for reference only.)

Package:8 Pcs inner box into a master carton.Poly bag with box packing.

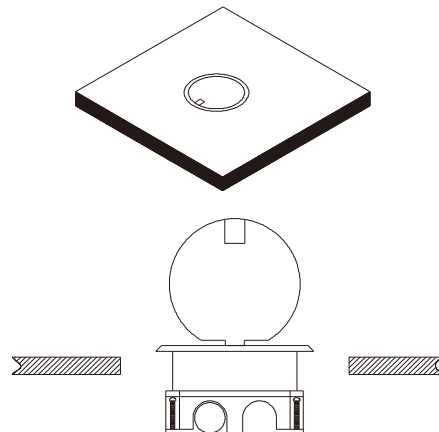
## Technical Parameters :

Parameter	Description
Panel Material	Brass alloy/Stainless steel
Surface finish	Wire drawing / Polishing / Spray painting
Panel Dimension(mm)	Φ140
Cutout(mm)	125*125
Capacity of modules	2 ways modules
Horizontal mounting	Horizontal installation
Sink box Material	Steel+Zinc plated
Base box dimension(mm)	125*125*60
Available modules	45*45/22.5*45(mm)



## Installation Guide

The concrete is then added to keep it level with the ground



# HTD-160LX/HTD-160LXP

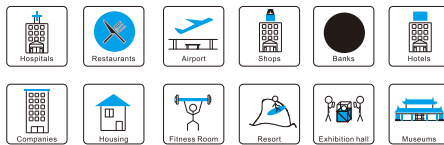


## Features:

1. Access to the underfloor duct system in order to pull wires or make splices.
2. A method to separate duct runs as they cross each other at the intersection.
3. Junction boxes are available configured with up to four openings on all four sides in combinations to provide for a wide variety of duct applications.
4. Heavy duty junction boxes are available for applications when heavy loads will be placed or rolled over the duct systems. These boxes are constructed with thick cover plates and the boxes are provided with adjustable support studs are required for application.
5. Multiple compartment junction boxes have interior partitions which separate the duct runs in the box and provide a continuous path through the box to the exiting duct runs. Corner conduit feeds are also available upon request.
6. Standard boxes are fabricated from galvanized steel with with thickness mild steel plate.
7. Junction boxes have adjustable cover plate assemblies which allow for adjustment upwards permitting accurate leveling to the finished floor.
8. Standard boxes are supplied with adjusting ring to match high preset. Box for use with higher presets require a junction box with a higher adjusting ring to suit the preset height.
9. Junction boxes are available for quarry tile applications. These boxes are supplied with an aluminum ring and pan deep to accept the tile. A series of stainless steel pans and rings are available to accept a wide range of floor finishes.

## Technical Parameters :

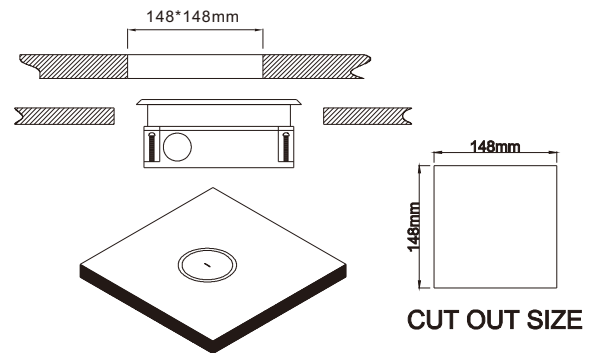
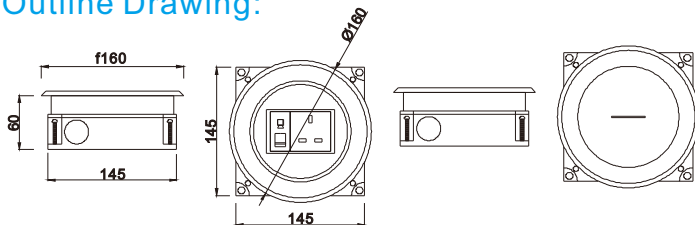
Parameter	Description
Panel Material	Brass alloy/Stainless steel
Surface finish	Wire drawing/Polishing/Spray painting
Panel Dimension(mm)	Φ160
Cutout(mm)	148*148
Capacity of modules	3 ways modules
Horizontal mounting	Horizontal installation
Sink box Material	Steel+Zinc plated
Base box dimension(mm)	145*145*60
Available modules	45*45/22.5*45(mm)



## Installation Guide

1. Remove the panel from the bottom box along with the electrical modules.
2. Fix the flooring with spare screws on the bottom box and place it in the embedded hole.
3. The flooring surface shall be at least level with the ground or 20mm below the ground.
4. Remove flooring surface ,Insert the 10--12mm lead head into the terminal of floor box.
5. Fix the panel to the bottom box with screws.  
The concrete is then added to keep it level with the ground

## Outline Drawing:



(Image is for reference only.)

Package:8 Pcs inner box into a master carton.Poly bag with box packing.



# HTD-145K

Floor Socket

Desktop Socket

Switch

Accessories

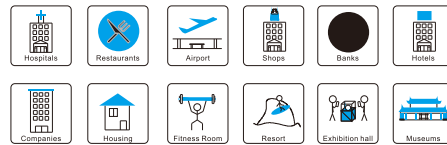


## Features:

- The lid was opened at 90 degrees:** Open the cover with the ground 90 degrees, furthermore, open and ground into a 180 degree flat is also available. When using, open the cover horizontally to the floor to avoid accident potential and product damage caused by cover erection.
- Simple installation:** Hinged cover with screw fix to steel box body.
- The outlet way of the line can be chosen, DK type cable exit or HK type cable exit:** The outlet port (reverse) can lead multi-strand wire cable out of the floor socket and effectively protect the wire cable skin against damaging. This cord outlet flaps fold down when in use to all cords out with main cover closed.
- More Strong Scratch Resistance:** Surface finish made from stainless steel or Brass by combination of tough material, Aluminum (ADC12) and shot blast finish on the surface achieves high scratch resistance.
- durable socket receptacle:** Using elastic phosphor copper avoids playing spark plug and plug set to bit dead, ensure high conductivity and more life of pulling and plugging over 15000 times.
- Good sealing:** With temporary lid-secure to body during pour to prevent ingress of slurry.
- Power-coated steel box** has 10\*25mm conduit and diameter of 27mm diameter knock-outs available to accommodate CAT 6A cabling available on request.

## Technical parameters :

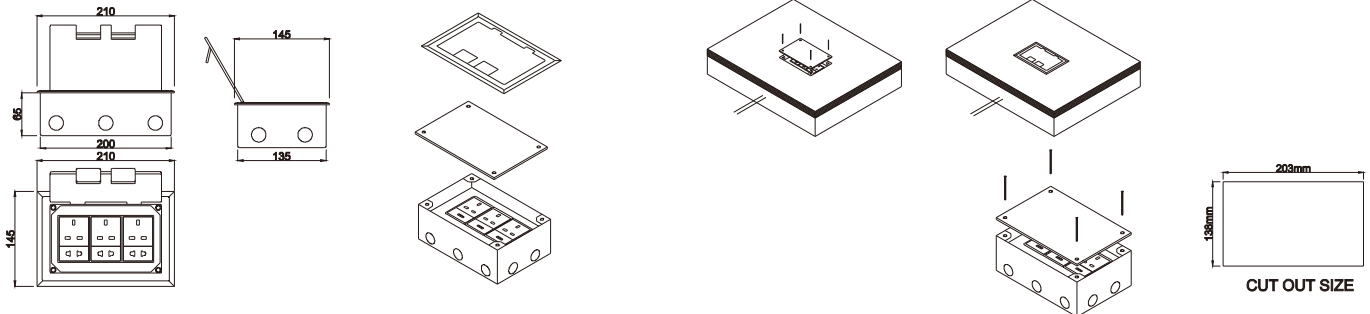
Parameter	Description
Panel Material	Brass alloy/Stainless-steel
Surface finish	Wire drawing/Polishing/Spray painting
Panel Dimension(mm)	210*145
Cutout(mm)	203x138
Capacity of modules	9 ways modules
Mounting type	Horizontal installation
Bracket material	Zinc Alloy & Alu Alloy
Base box dimension(mm)	200*135*75
Available modules	45*45/22.5*45(mm)



## Installation Guide

- Remove the panel from the bottom box along with the electrical modules.
- Fix the flooring with spare screws on the bottom box and place it in the embedded hole.
- The flooring surface shall be at least level with the ground or 20mm below the ground.
- Remove flooring surface, insert the 10--12mm lead head into the terminal of floor box.
- Fix the panel to the bottom box with screws.

## Outline Drawing: Unit:mm



(Image is for reference only.)

Package: 8 Pcs inner box into a master carton. Poly bag with box packing.

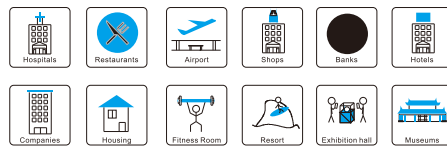


**Features:**

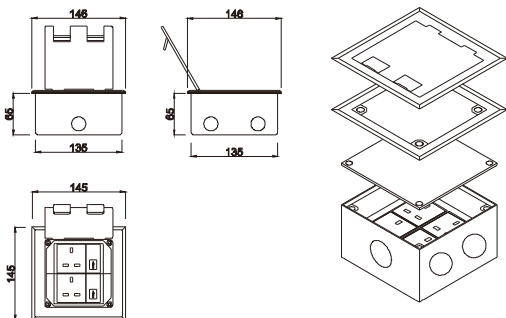
- The lid was opened at 90 degrees:** Open the cover with the ground 90 degrees, furthermore , open and ground into a 180 degree flat is also available. When using, open the cover horizontally to the floor to avoid accident potential and product damage caused by cover erection.
- Simple installation:** Hinged cover with screw fix to steel box body.
- The outlet way of the line can be chosen, DK type cable exit or HK type cable exit:** The outlet port(reverse) can lead multi-strand wire cable out of the floor socket and effectively protect the wire cable skin against damaging. This cord outlet flaps fold down when in use to all cords out with main cover closed.
- More Strong Scratch Resistance:** Surface finish made from stainless steel or Brass by combination of tough material, Aluminum (ADC12) and shot blast finish on the surface achieves high scratch resistance.
- durable socket receptacle:** Using elastic phosphor copper avoids playing spark plug and plug set to bit dead ,ensure high conductivity and more life of pulling and plugging over 15000 times.
- Good sealing:** With temporary lid-secure to body during pour to prevent ingress of slurry.
- Power-coated steel box** has 10\*25mm conduit and diameter of 27mm diameter knock-outs available to accommodate CAT 6A cabling available on request.

**Technical Parameters :**

Parameter	Description
Panel Material	Brass alloy/Stainless steel
Surface finish	Wire drawing/Polishing/Spray painting
Panel Dimension(mm)	146*146
Cutout(mm)	138x138
Capacity of modules	6 ways modules
Mounting type	Mounting ST optical fiber or SC optical fiber or Horizontal installation
Bracket material	Zinc Alloy & Alu Alloy
Sink box Material	Steel+Zinc plated
Base box dimension(mm)	135*135*65
Available modules	45*45/22.5*45(mm)



**Outline Drawing:** Unit:mm

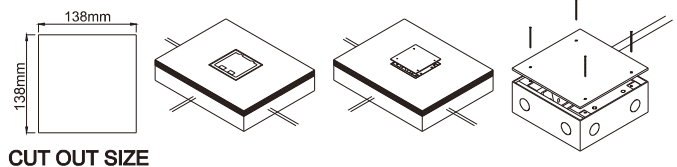


(Image is for reference only.)

Package:8 Pcs inner box into a master carton.Poly bag with box packing.

**Installation Guide**

- Remove the panel from the bottom box along with the electrical modules.
- Fix the flooring with spare screws on the bottom box and place it in the embedded hole.
- The flooring surface shall be at least level with the ground or 20mm below the ground.
- Remove flooring surface ,Insert the 10--12mm lead head into the terminal of floor box.
- Fix the panel to the bottom box with screws.





Floor Socket

Desktop Socket

Switch

Accessories

# HTD-180K

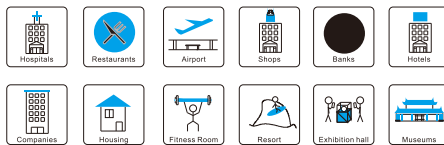


## Features:

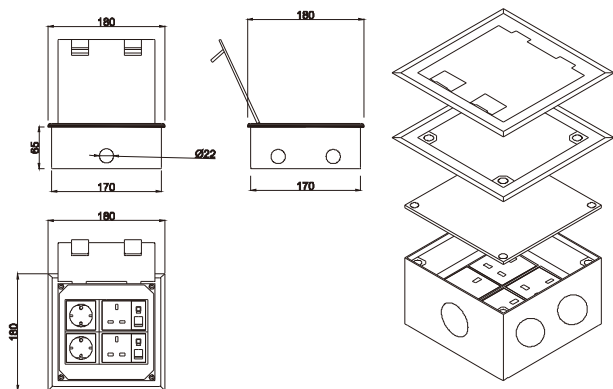
- The lid was opened at 90 degrees:**When using, open the cover horizontally of 90 degrees to the floor to avoid accident potential and product damage caused by cover erection.
- Side-mounting:**Outlet bracket for side-mounting for 86 type switch board
- The outlet way of the line can be chosen,DK type cable exit or HK type cable exit:**DK:Single direction outlet.HK: Dual direction outlet.
- More Strong Scratch Resistance:**Material made from high quality H62 Brass and stainless 304, Automatic polish robot and painting machine to ensure reliable quality.
- Good sealing:**With temporary lid-secure to body during pour to prevent ingress of slurry.
- Power-coated steel box** has 10\*25mm conduit and diameter of 27mm diameter knock-outs available to accommodate CAT 6A cabling available on request.

## Technical Parameters :

Parameter	Description
Panel Material	Brass alloy/Stainless steel
Surface finish	Wire drawing/Polishing/Spray painting
Panel Dimension(mm)	180*180
Cutout(mm)	173x173
Capacity of modules	10 ways modules
Mounting type	Horizontal installation
Bracket material	Zinc Alloy & Alu Alloy
Sink box Material	Steel+Zinc plated
Base box dimension(mm)	170*170*90
Available modules	45*45/45*22.5(mm)



## Outline Drawing: Unit:mm

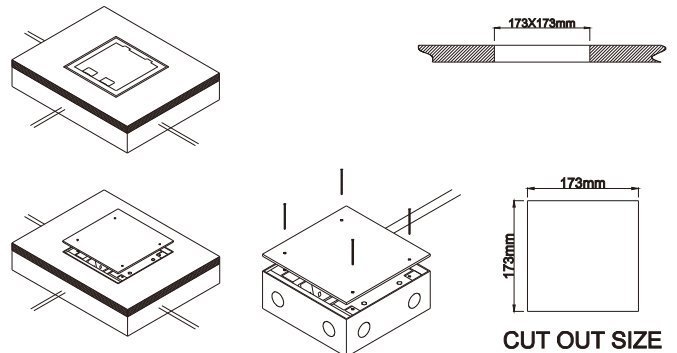


(Image is for reference only.)

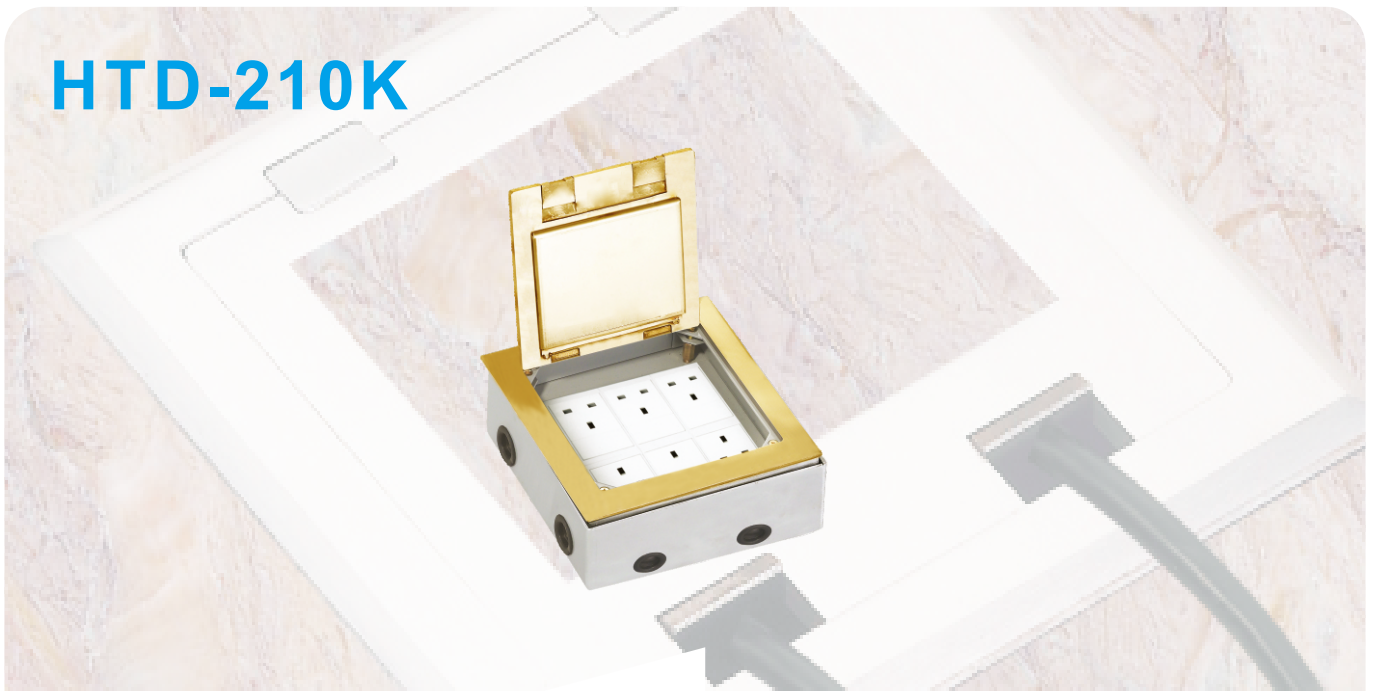
Package:6 Pcs inner box into a master carton.Poly bag with box packing.

## Installation Guide

- Cut out 173\*173(mm):Powering the slurry.
- Remove the pre-installed temporary lid,wiring and installing modules.
- Per-install the cable pipe as per your request .
- Install cover lid and tighten with screws.
- Conceal the cut edge of carpet of flooring



# HTD-210K

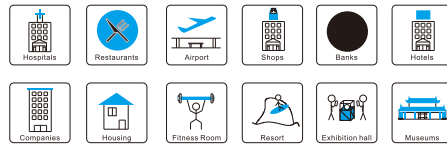


## Features:

- The lid was opened at 90 degrees:** Open the cover with the ground 90 degrees, furthermore, open and ground into a 180 degree flat is also available. When using, open the cover horizontally to the floor to avoid accident potential and product damage caused by cover erection.
- Simple installation:** Hinged cover with screw fix to steel box body.
- The outlet way of the line can be chosen, DK type cable exit or HK type cable exit:** The outlet port (reverse) can lead multi-strand wire cable out of the floor socket and effectively protect the wire cable skin against damaging. This cord outlet flaps fold down when in use to all cords out with main cover closed.
- More Strong Scratch Resistance:** Surface finish made from stainless steel or Brass by combination of tough material, Aluminum (ADC12) and shot blast finish on the surface achieves high scratch resistance.
- durable socket receptacle:** Using elastic phosphor copper avoids playing spark plug and plug set to bit dead, ensure high conductivity and more life of pulling and plugging over 15000 times.
- Good sealing:** With temporary lid-secure to body during pour to prevent ingress of slurry.
- Power-coated steel box** has 10\*25mm conduit and diameter of 27mm diameter knock-outs available to accommodate CAT 6A cabling available on request.

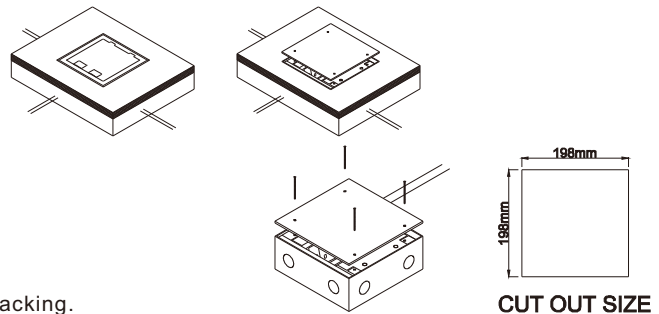
## Technical Parameters :

Parameter	Description
Panel Material	Brass alloy/Stainless steel
Surface finish	Wire drawing/Polishing/Spray painting
Panel Dimension(mm)	210*210
Cutout(mm)	198*198
Capacity of modules	15 ways modules
Mounting type	Declining installation
Sink box Material	Steel+Zinc plated
Base box dimension(mm)	195*195*75
Available modules	45*45/22.5*45(mm)

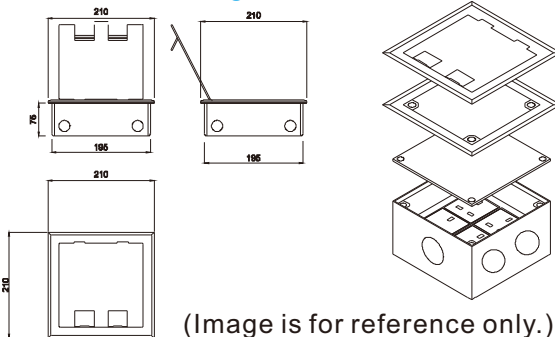


## Installation Guide

- Remove the panel from the bottom box along with the electrical modules.
- Fix the flooring with spare screws on the bottom box and place it in the embedded hole.
- The flooring surface shall be at least level with the ground or 20mm below the ground.
- Remove flooring surface, insert the 10--12mm lead head into the terminal of floor box.
- Fix the panel to the bottom box with screws.



## Outline Drawing: Unit:mm



Package:6 Pcs inner box into a master carton.Poly bag with box packing.



# HTD-210CK

Floor Socket

Desktop Socket

Switch

Accessories

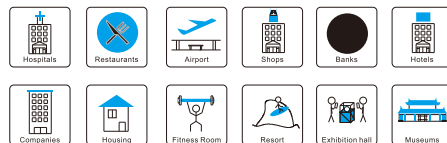


## Features:

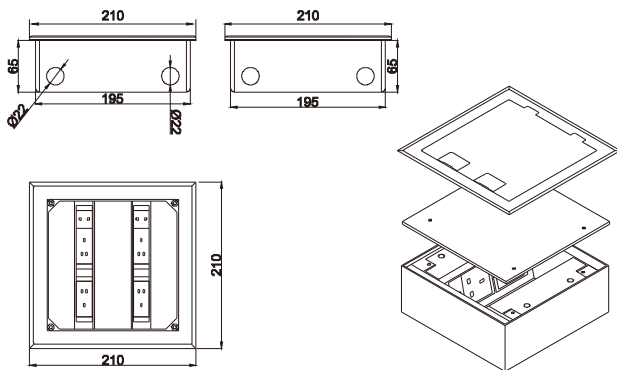
- The lid was opened at 90 degrees:** When using, open the cover horizontally of 90 degrees to the floor to avoid accident potential and product damage caused by cover erection.
- Side-mounting:** Outlet bracket for side-mounting for 86 type switch board
- The outlet way of the line can be chosen, DK type cable exit or HK type cable exit:** DK:Single direction outlet.HK: Dual direction outlet.
- More Strong Scratch Resistance:** Material made from high quality H62 Brass and stainless 304, Automatic polish robot and painting machine to ensure reliable quality.
- Good sealing:** With temporary lid-secure to body during pour to prevent ingress of slurry.
- Power-coated steel box** has 10\*25mm conduit and diameter of 27mm diameter knock-outs available to accommodate CAT 6A cabling available on request.

## Technical Parameters :

Parameter	Description
Panel Material	Brass alloy/Stainless steel
Surface finish	Wire drawing/Polishing/Spray painting
Panel Dimension(mm)	210*210
Cutout(mm)	198x198
Capacity of modules	10 ways modules
Mounting type	Declining installation
Sink box Material	Steel+Zinc plated
Base box dimension(mm)	190*190*75
Available modules	45*45/45*22.5(mm)



## Outline Drawing: Unit:mm

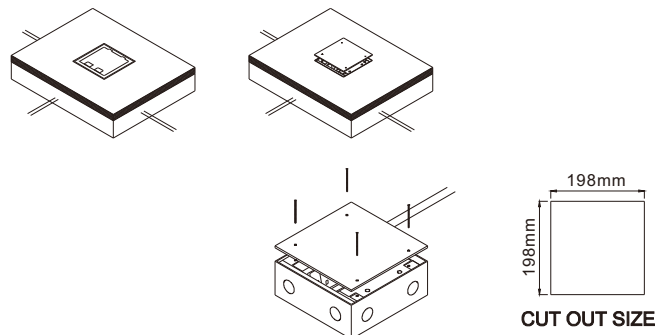


(Image is for reference only.)

Package:6 Pcs inner box into a master carton.Poly bag with box packing.

## Installation Guide

- Cut out 198\*198mm for the slurry.
- Remove the pre-installed temporary lid, wiring and installing modules.
- Pre-install the cable pipe as per your request.
- Install cover lid and tighten with screws.
- Conceal the cut edge of carpet or flooring.



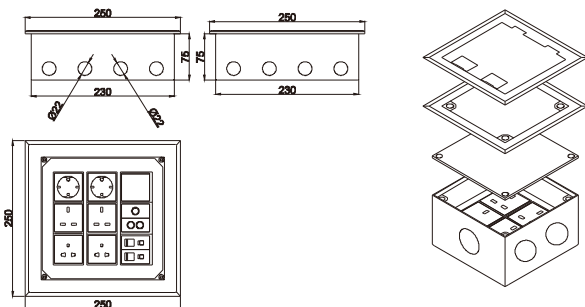
# HTD-250K



## Features:

- The lid was opened at 90 degrees :** Open the cover with the ground 90 degrees, furthermore , open and ground into a 180 degree flat is also available. When using, open the cover horizontally to the floor to avoid accident potential and product damage caused by cover erection.
- Simple installation:** Hinged cover with screw fix to steel box body.
- The outlet way of the line can be chosen, DK type cable exit or HK type cable exit: The outlet port(reverse) can lead multi-strand wire cable out of the floor socket and effectively protect the wire cable skin against damaging. This cord outlet flaps fold down when in use to all cords out with main cover closed.
- More Strong Scratch Resistance:** Surface finish made from stainless steel or Brass by combination of tough material, Aluminum (ADC12) and shot blast finish on the surface achieves high scratch resistance.
- durable socket receptacle:** Using elastic phosphor copper avoids playing spark plug and plug set to bit dead ,ensure high conductivity and more life of pulling and plugging over 15000 times. PC+ABS(1. Modules fireproof : 850 degree C temp. ; 2. Modules don't distortion under 102 degree C temp. ; 3. Stand under 15 degree C temp) ; Oxygen Insulation & Fire resistance in accordance with UL94 international standard.
- Good sealing:** With temporary lid-secure to body during pour to prevent ingress of slurry.
- Power-coated steel box has 10\*25mm conduit and diameter of 27mm diameter knock-outs available to accommodate CAT 6A cabling available on request.

## Outline Drawing: Unit:mm

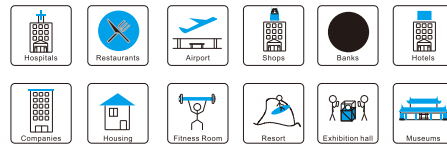


(Image is for reference only.)

Package: 4 Pcs inner box into a master carton. Poly bag with box packing.

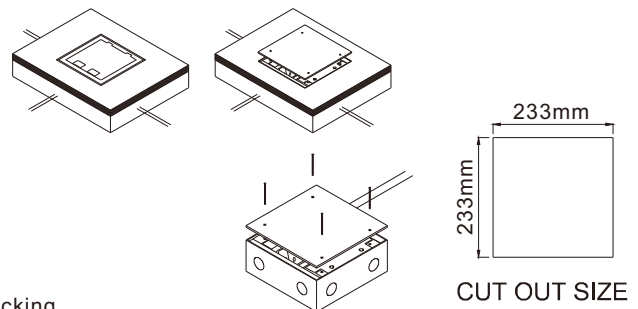
## Technical Parameters :

Parameter	Description
Panel Material	Brass alloy/Stainless steel
Surface finish	Wire drawing/Polishing/Spray painting
Panel Dimension(mm)	250*250
Cutout(mm)	233x233
Capacity of modules	18 ways modules
Mounting type	Horizontal installation
Bracket material	Zinc Alloy & Alu Alloy
Sink box Material	Steel+Zinc plated
Base box dimension(mm)	230*230*75
Available modules	45*45/22.5*45(mm)



## Installation Guide

- Remove the panel from the bottom box along with the electrical modules.
- Fix the flooring with spare screws on the bottom box and place it in the embedded hole.
- The flooring surface shall be at least level with the ground or 20mm below the ground.
- Remove flooring surface ,Insert the 10--12mm lead head into the terminal of floor box.
- Fix the panel to the bottom box with screws.



CUT OUT SIZE



# HTD-251CK

Floor Socket

Desktop Socket

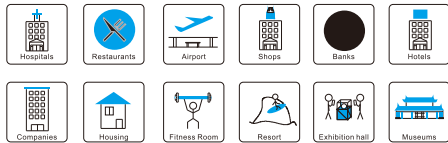
Switch

Accessories



## Features:

- 1.Remove the panel from the bottom box along with the electrical modules.
- 2.Fix the flooring with spare screws on the bottom box and place it in the embedded hole.
- 3.The flooring surface shall be at least level with the ground or 20mm below the ground.
- 4.Remove flooring surface ,Insert the 10--12mm lead head into the terminal of floor box.
- 5.Fix the panel to the bottom box with screws.



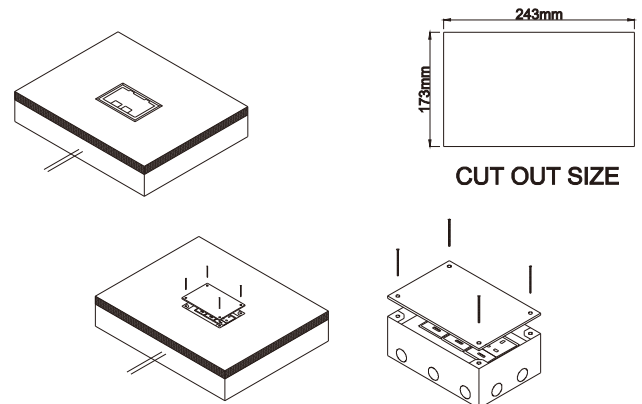
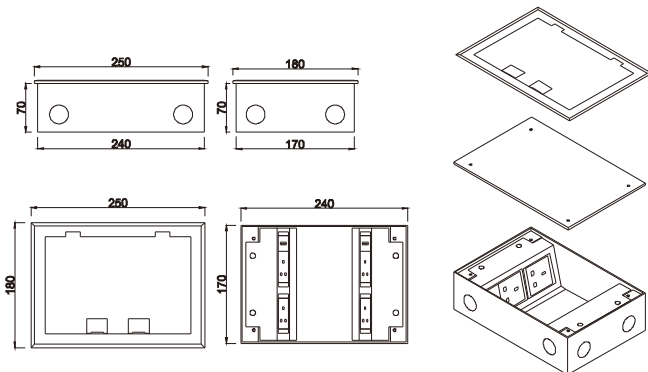
## Technical Parameters :

Parameter	Description
Panel Material	Brass alloy/Stainless steel
Surface finish	Wire drawing/Polishing/Spray painting
Panel Dimension(mm)	250*180
Cutout(mm)	243*173
Capacity of modules	10 ways modules
Mounting type	Horizontal installation
Bracket material	Zinc Alloy & Alu Alloy
Sink box Material	Steel+Zinc plated
Base box dimension(mm)	240*170*75
Available modules	45*45/22.5*45(mm)

## Installation Guide

- 1.The lid was opened at 90 degrees : Open the cover with the ground 90 degrees, furthermore , open and ground into a 180 degree flat is also available.When using, open the cover horizontally to the floor to avoid accident potential and product damage caused by cover erection.
- 2.Simple installation: Hinged cover with screw fix to steel box body.
- 3.The outlet way of the line can be chosen,DK type cable exit or HK type cable exit:The outlet port(reverse) can lead multi-strand wire cable out of the floor socket and effectively protect the wire cable skin against damaging. This cord outlet flaps fold down when in use to all cords out with main cover closed.

## Outline Drawing: Unit:mm



(Image is for reference only.)

Package:6 Pcs inner box into a master carton.Poly bag with box packing.

# HTD-300K

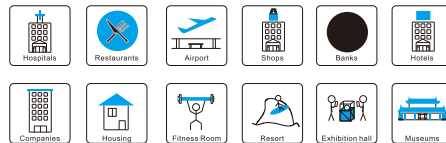


## Features:

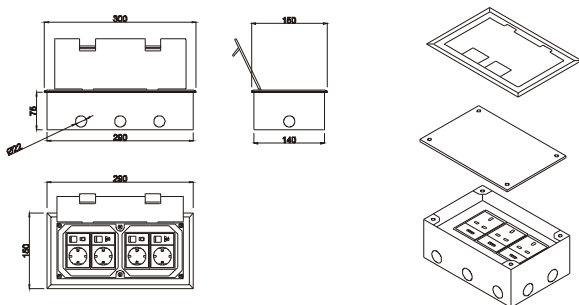
- The lid was opened at 90 degrees:** Open the cover with the ground 90 degrees, furthermore , open and ground into a 180 degree flat is also available. When using, open the cover horizontally to the floor to avoid accident potential and product damage caused by cover erection.
- Simple installation:** Hinged cover with screw fix to steel box body.
- The outlet way of the line can be chosen, DK type cable exit or HK type cable exit:** The outlet port(reverse) can lead multi-strand wire cable out of the floor socket and effectively protect the wire cable skin against damaging. This cord outlet flaps fold down when in use to all cords out with main cover closed.
- More Strong Scratch Resistance:** Surface finish made from stainless steel or Brass by combination of tough material, Aluminum (ADC12) and shot blast finish on the surface achieves high scratch resistance.
- durable socket receptacle:** Using elastic phosphor copper avoids playing spark plug and plug set to bit dead ,ensure high conductivity and more life of pulling and plugging over 15000 times.
- Good sealing:** With temporary lid-secure to body during pour to prevent ingress of slurry.
- Power-coated steel box** has 10\*25mm conduit and diameter of 27mm diameter knock-outs available to accommodate CAT 6A cabling available on request.

## Technical Parameters :

Parameter	Description
Panel Material	Brass alloy/Stainless steel
Surface finish	Wire drawing/Polishing/Spray painting
Panel Dimension(mm)	300*150
Cutout(mm)	293x143
Capacity of modules	12 ways modules
Mounting type	Horizontal installation
Bracket material	Zinc Alloy & Alu Alloy
Sink box Material	Steel+Zinc plated
Base box dimension(mm)	290*140*75
Available modules	45*45/22.5*45(mm)



## Outline Drawing: Unit:mm

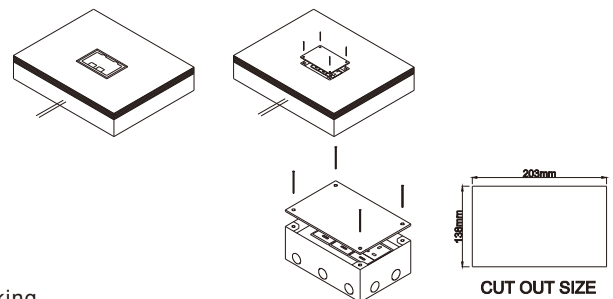


(Image is for reference only.)

Package:6 Pcs inner box into a master carton. Poly bag with box packing.

## Installation Guide

- Remove the panel from the bottom box along with the electrical modules.
- Fix the flooring with spare screws on the bottom box and place it in the embedded hole.
- The flooring surface shall be at least level with the ground or 20mm below the ground.
- Remove flooring surface ,Insert the 10--12mm lead head into the terminal of floor box.
- Fix the panel to the bottom box with screws.





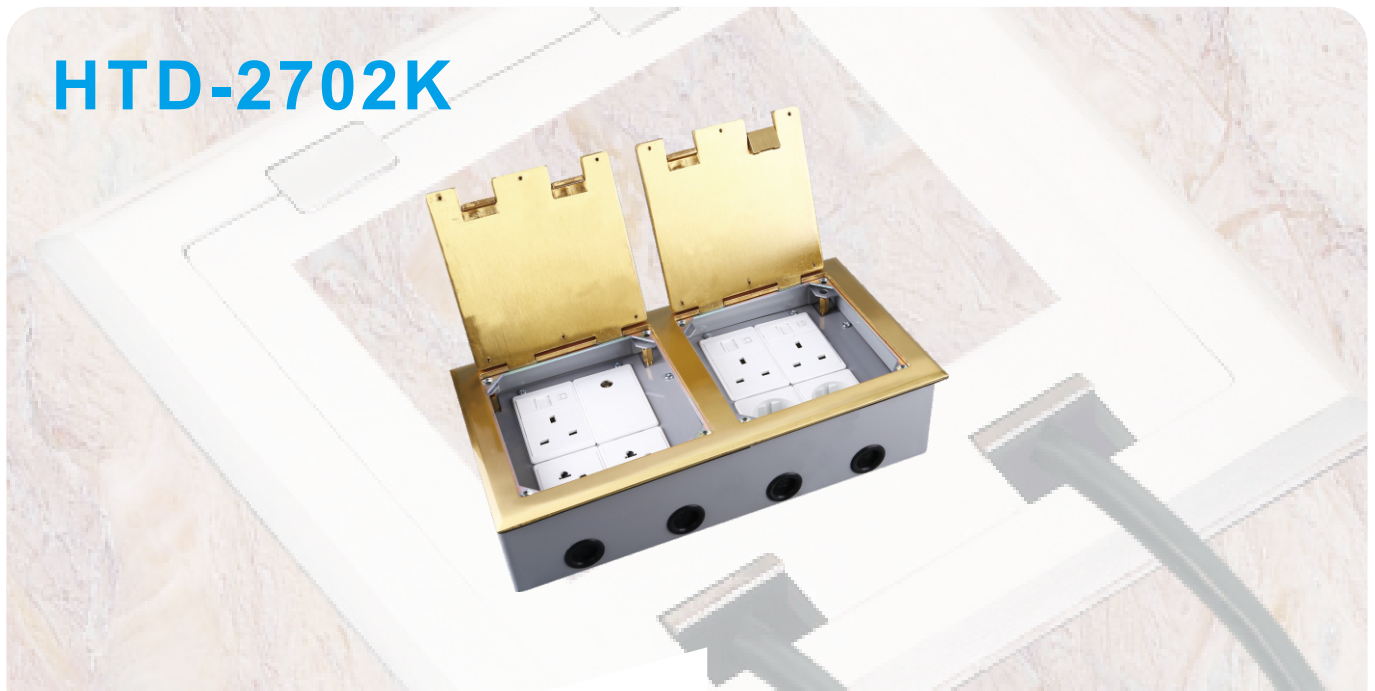
# HTD-2702K

Floor Socket

Desktop Socket

Switch

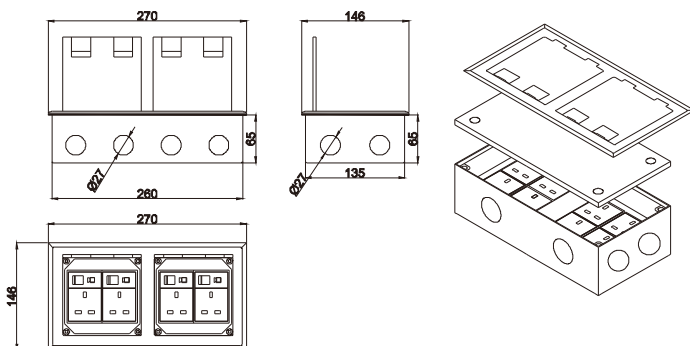
Accessories



## Features:

- The lid was opened at 90 degrees:** Open the cover with the ground 90 degrees, furthermore, open and ground into a 180 degree flat is also available. When using, open the cover horizontally to the floor to avoid accident potential and product damage caused by cover erection.
- Simple installation:** Hinged cover with screw fix to steel box body.
- Protection of cable exit as DK type cable exit:** The outlet port(reverse) can lead multi-strand wire cable out of the floor socket and effectively protect the wire cable skin against damaging. This cord outlet flaps fold down when in use to all cords out with main cover closed.
- More Strong Scratch Resistance:** Surface finish made from stainless steel or Brass by combination of tough material, Aluminum (ADC12) and shot blast finish on the surface achieves high scratch resistance.
- durable socket receptacle:** Using elastic phosphor copper avoids playing spark plug and plug set to bit dead, ensure high conductivity and more life of pulling and plugging over 15000 times.
- Good sealing:** With temporary lid-secure to body during pour to prevent ingress of slurry.

## Outline Drawing: Unit:mm

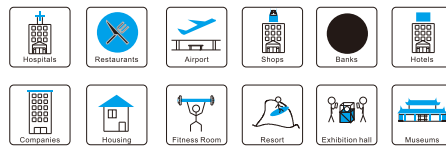


(Image is for reference only.)

Package:6 Pcs inner box into a master carton.Poly bag with box packing.

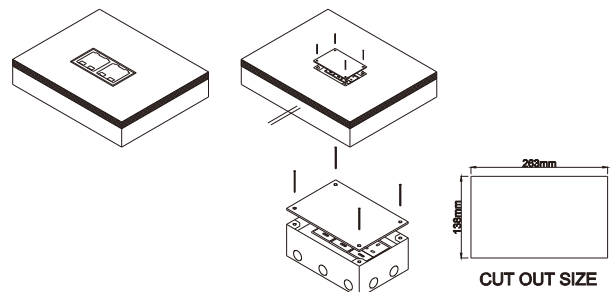
## Technical Parameters :

Parameter	Description
Panel Material	Brass alloy/Stainless steel
Surface finish	Wire drawing/Polishing/Spray painting
Panel Dimension(mm)	270*146
Cutout(mm)	263x138
Capacity of modules	12 ways modules
Mounting type	Horizontal installation
Sink box Material	Steel+Zinc plated
Base box dimension(mm)	260*135*75
Available modules	45*45/22.5*45(mm)



## Installation Guide

- Remove the panel from the bottom box along with the electrical modules.
- Fix the flooring with spare screws on the bottom box and place it in the embedded hole.
- The flooring surface shall be at least level with the ground or 20mm below the ground.
- Remove flooring surface, Insert the 10--12mm lead head into the terminal of floor box.
- Fix the panel to the bottom box with screws.





# HTD-302AL

## Features:

- The lid was opened at 90 degrees:** Open the cover with the ground 90 degrees.
- Simple installation:** Hinged cover with screw fix to steel box body.
- More Strong Scratch Resistance:** Surface finish made from stainless steel or Brass by combination of tough material, Aluminum (ADC12) and shot blast finish on the surface achieves high scratch resistance.
- 4.durable socket receptacle:** Using elastic phosphor copper avoids playing spark plug and plug set to bit dead ,ensure high conductivity and more life of pulling and plugging over 15000 times.
- 5.Good sealing:** With temporary lid-secure to body during pour to prevent ingress of slurry.

## Technical Parameters :

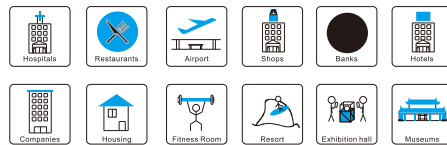
Parameter	Description
Panel Material	Brass alloy/Stainless steel
Surface finish	Wire drawing/Polishing/Spray painting
Panel Dimension(mm)	210*140
Cutout(mm)	193x123
Capacity of modules	6 ways modules
Mounting type	Declining angle installation
Sink box Material	Steel+Zinc plated
Base box dimension(mm)	190*120*75
Available modules	45*45/22.5*45(mm)



Concrete Floor



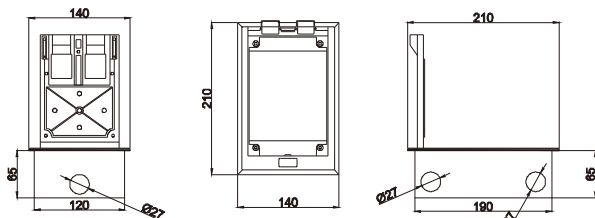
Raised Floor



## Installation Guide

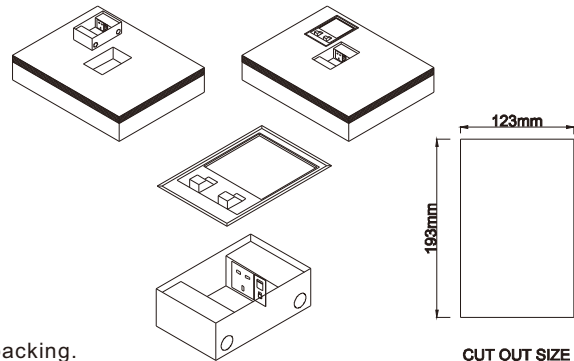
- Remove the panel from the bottom box along with the electrical modules.
- Fix the flooring with spare screws on the bottom box and place it in the embedded hole.
- The flooring surface shall be at least level with the ground or 20mm below the ground.
- Remove flooring surface ,insert the 10--12mm lead head into the terminal of floor box.
- Fix the panel to the bottom box with screws.

## Outline Drawing: Unit:mm



(Image is for reference only.)

Package: 10 Pcs inner box into a master carton.Poly bag with box packing.



CUT OUT SIZE